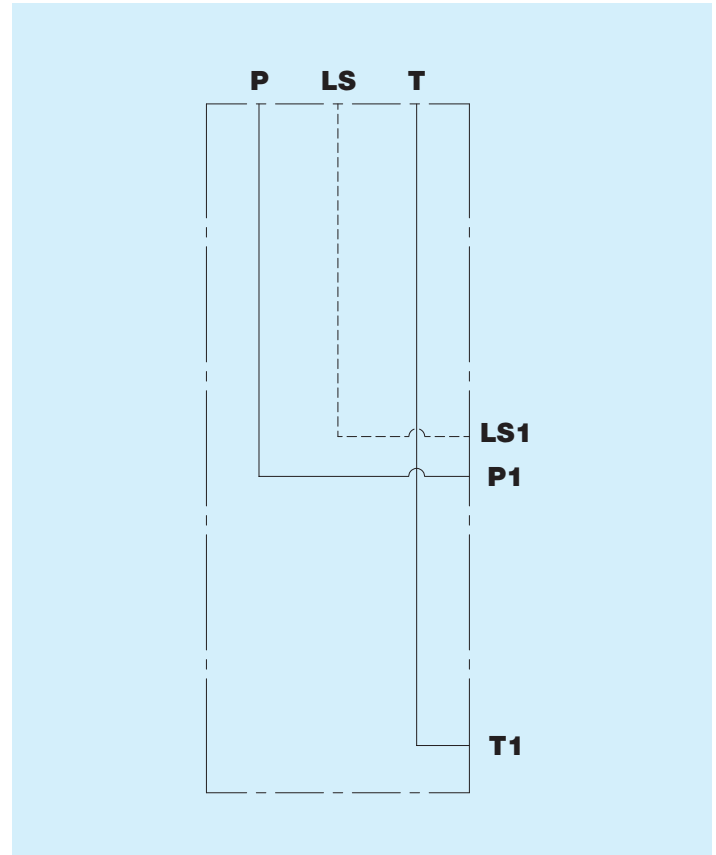


Cover inlet Load sensing TE051F
Interface IBW0511

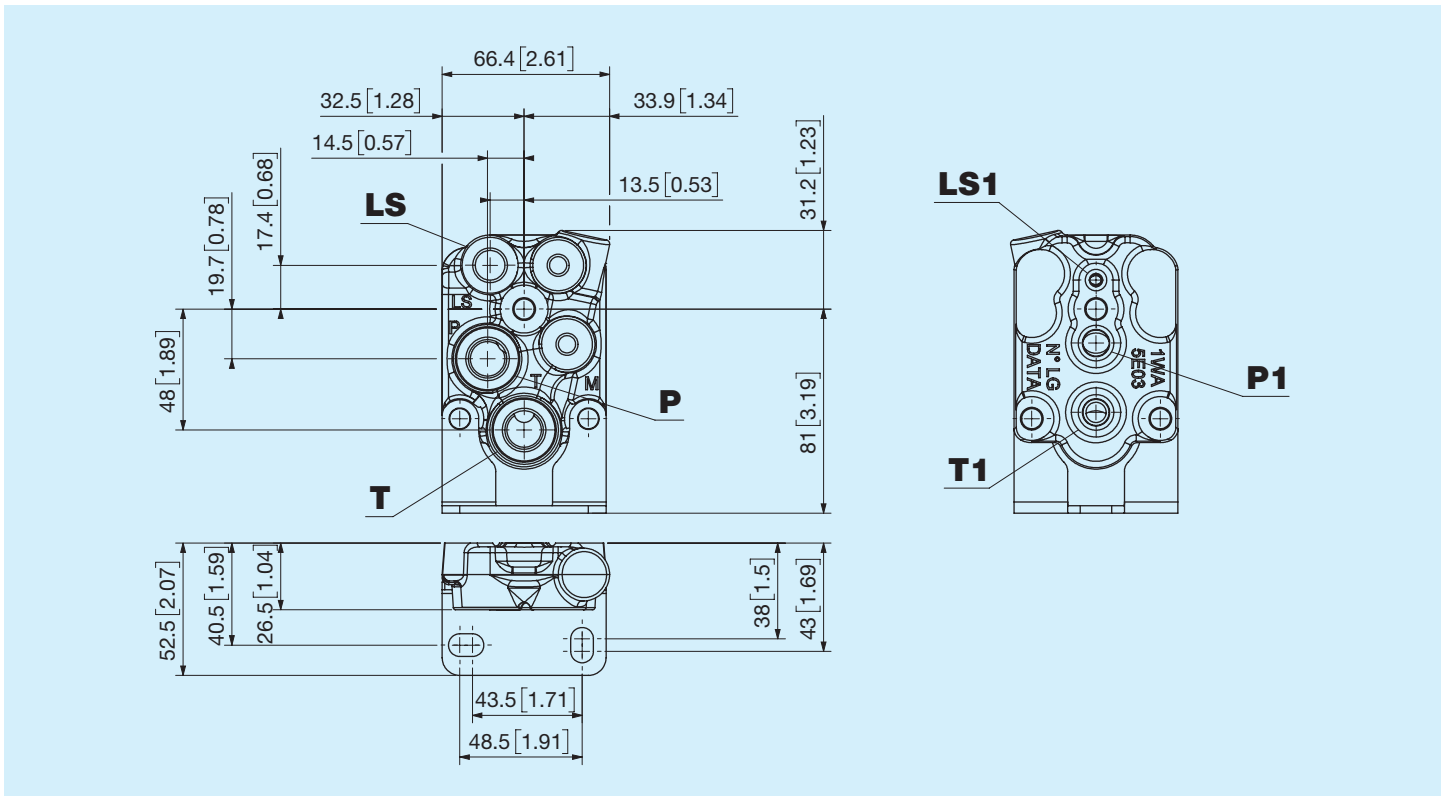


Before use, carefully read the GENERAL INSTRUCTIONS FOR USE OF DIRECTIONAL CONTROL VALVES

Nominal flow	50 l/min 13.2 US gpm
Nominal pressure	250 bar 3625 psi
Maximum tank pressure	50 bar 725 psi
Temperature range	-20°C +85°C NBR seals (max peak +100°C) -20°C + 130°C HNBR seals
Oil viscosity	from 15 mm²/s to 90 mm²/s (15 cSt to 90 cSt)
Fluid	Hydraulic fluids as defined in ISO 6743-4 standard
Weight	0.4 kg 0.88 lb
Interface	IBW0511



Dimensions



Thread Port P

Model	Type	Torque Nm
A	3/8" GAS ISO 1179	35
C	M18x1.5 ISO 9974	40
W	M18x1.5 ISO 6149	40
E	3/4" - 16 SAE ISO 11926	50

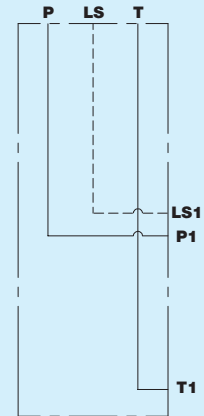
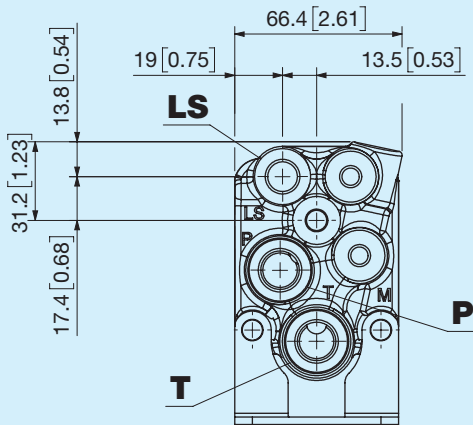
Thread Port T

Model	Type	Torque Nm
A	3/8" GAS ISO 1179	35
B	1/2" GAS ISO 1179	70
C	M18x1.5 ISO 9974	40
N	M22x1.5 ISO 9974	78
W	M18x1.5 ISO 6149	40
J	M22x1.5 ISO 6149	60
E	3/4" - 16 SAE ISO 11926	50
R	7/8" - 14 SAE ISO 11926	77

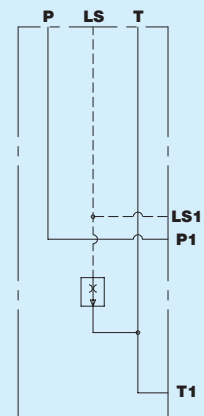
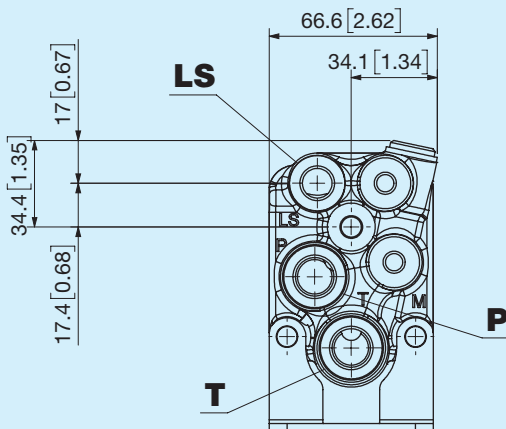
Thread Port LS

Model	Type	Torque Nm
L	1/4" GAS ISO 1179	14
3	M14x1.5 ISO 9974	10
K	M14x1.5 ISO 6149	10
P	9/16" - 18 SAE ISO 11926	21

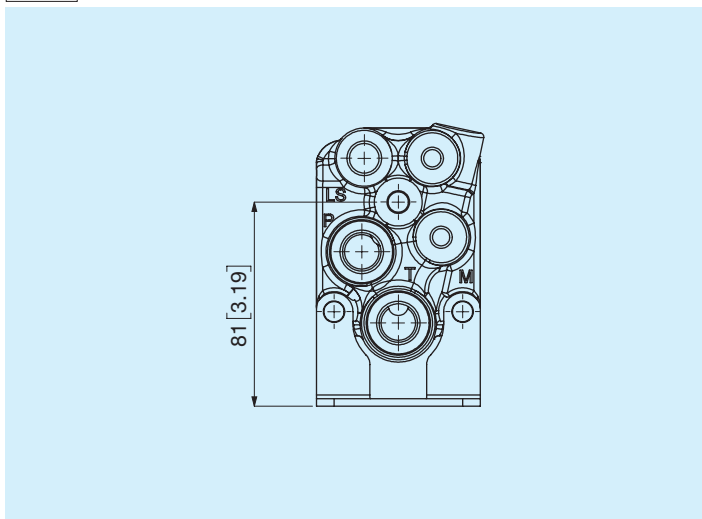
N None



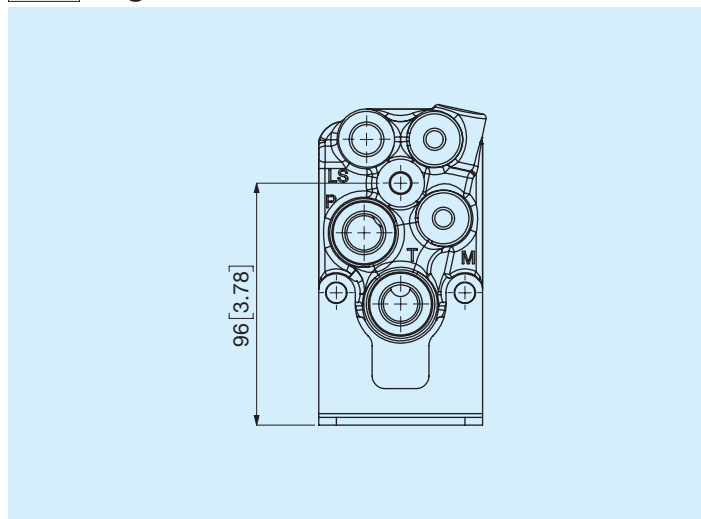
A With cartridge relief valve



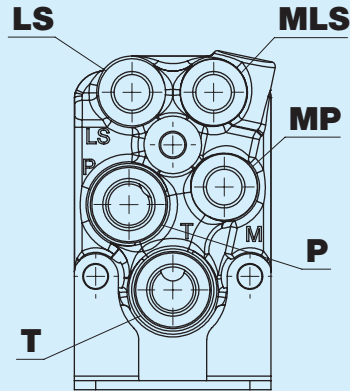
H2 Standard



H3 High



MP and MLS - Pressure gauge inlets



Thread Port MP and MLS

Model	Type	Torque Nm
N	None	
L	1/4" GAS ISO 1179	14
3	M14x1.5 ISO 9974	10
K	M14x1.5 ISO 6149	10
P	9/16" - 18 SAE ISO 11926	21

	1	2	3	4	5	6	7	8	9	10	11	12	
TE051F	<input type="checkbox"/>	<input type="checkbox"/>	<input type="checkbox"/>	<input type="checkbox"/>	<input type="checkbox"/>	<input type="checkbox"/>	<input type="checkbox"/>	<input type="checkbox"/>	<input type="checkbox"/>	<input type="checkbox"/>	<input type="checkbox"/>	<input type="checkbox"/>	
1	Thread type												
<input type="checkbox"/>	M Male					F Female							
2	Thread Port P												
<input type="checkbox"/>	A 3/8" GAS ISO 1179				C M18x1.5 ISO 9974				W M18x1.5 ISO 6149				E 3/4" - 16 SAE ISO 11926
3	Thread Port T												
<input type="checkbox"/>	A 3/8" GAS ISO 1179				C M18x1.5 ISO 9974				W M18x1.5 ISO 6149				E 3/4" - 16 SAE ISO 11926
	B 1/2" GAS ISO 1179				N M22x1.5 ISO 9974				J M22x1.5 ISO 6149				R 7/8" - 14 SAE ISO 11926
4	Thread Port LS												
<input type="checkbox"/>	L 1/4" GAS ISO 1179				3 M14x1.5 ISO 9974				K M14x1.5 ISO 6149				P 9/16" - 18 SAE ISO 11926
5	Options on ports P-T-LS												
<input type="checkbox"/>	A P-T-LS open				B P-T open, LS plugged				C P open, T-LS plugged				D P-LS open, T plugged
6	Options on line LS												
<input type="checkbox"/>	N None					A With cartridge relief valve							
7 8	Bracket height												
<input type="checkbox"/>	H2 Standard					H3 High							
9	Thread Port MP												
<input type="checkbox"/>	N None				3 M14x1.5 ISO 9974				P 9/16" - 18 SAE ISO 11926				
	L 1/4" GAS ISO 1179				K M14x1.5 ISO 6149								
10	Thread Port MLS												
<input type="checkbox"/>	N None				3 M14x1.5 ISO 9974				P 9/16" - 18 SAE ISO 11926				
	L 1/4" GAS ISO 1179				K M14x1.5 ISO 6149								
11	Options on ports MP - MLS												
<input type="checkbox"/>	N None				C MP not processed, MLS open				F MP and MLS plugged				
	A MP open, MLS not processed				D MP not processed, MLS plugged				G MP open, MLS plugged				
	B MP plugged, MLS not processed				E MP and MLS open				H MP plugged, MLS open				
12	External coating												
<input type="checkbox"/>	A External coating					N None							