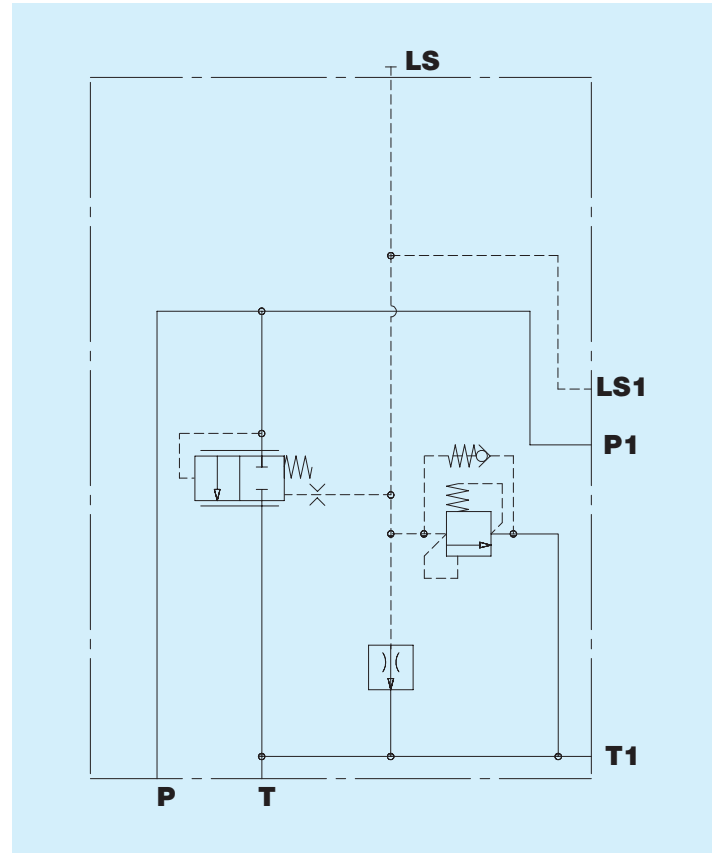


Testata di entrata L.S. TE05C con compensatore  
Interfaccia IBW0511

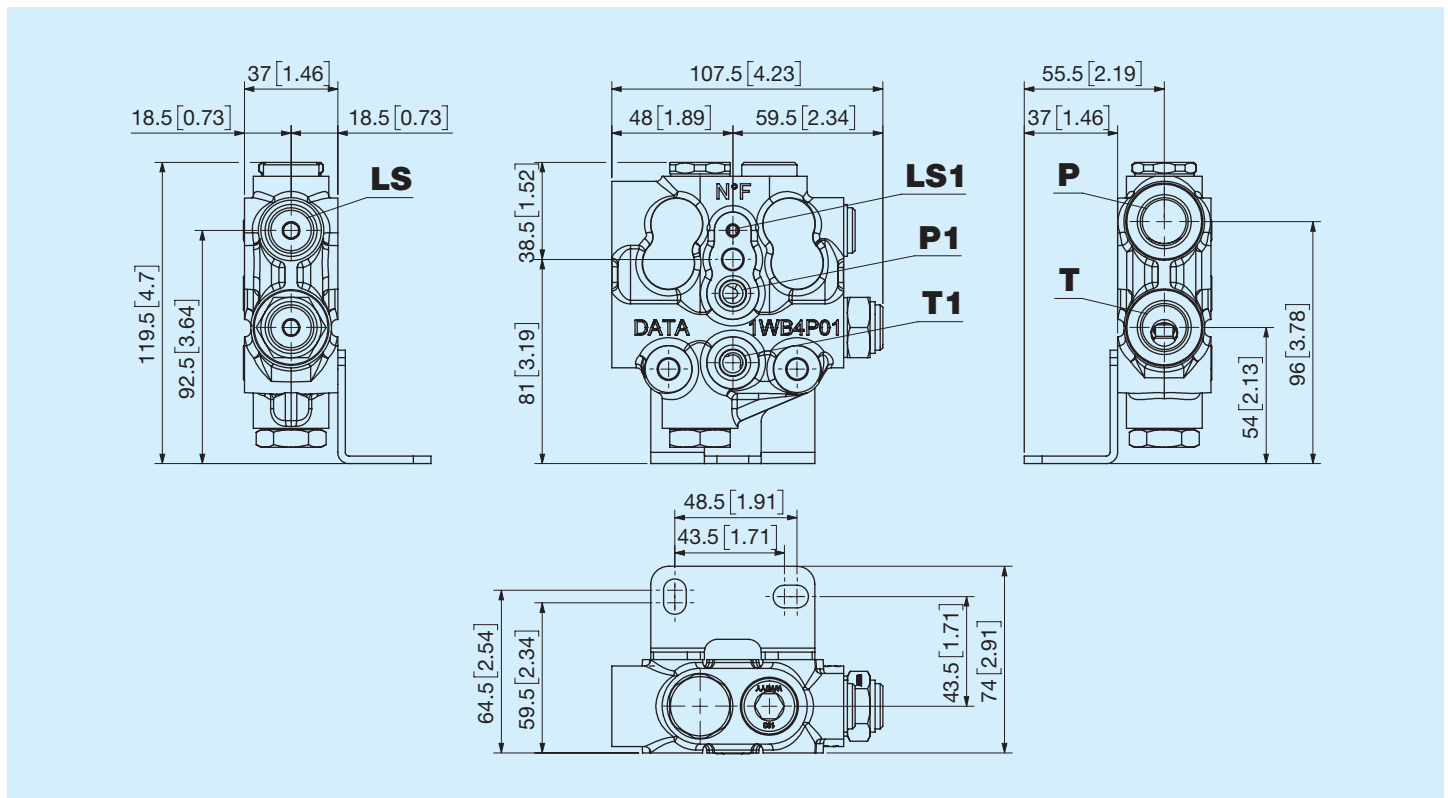


Prima di iniziare l'utilizzo leggere attentamente il documento ISTRUZIONI GENERALI D'IMPIEGO PER LE VALVOLE DI CONTROLLO DIREZIONALE

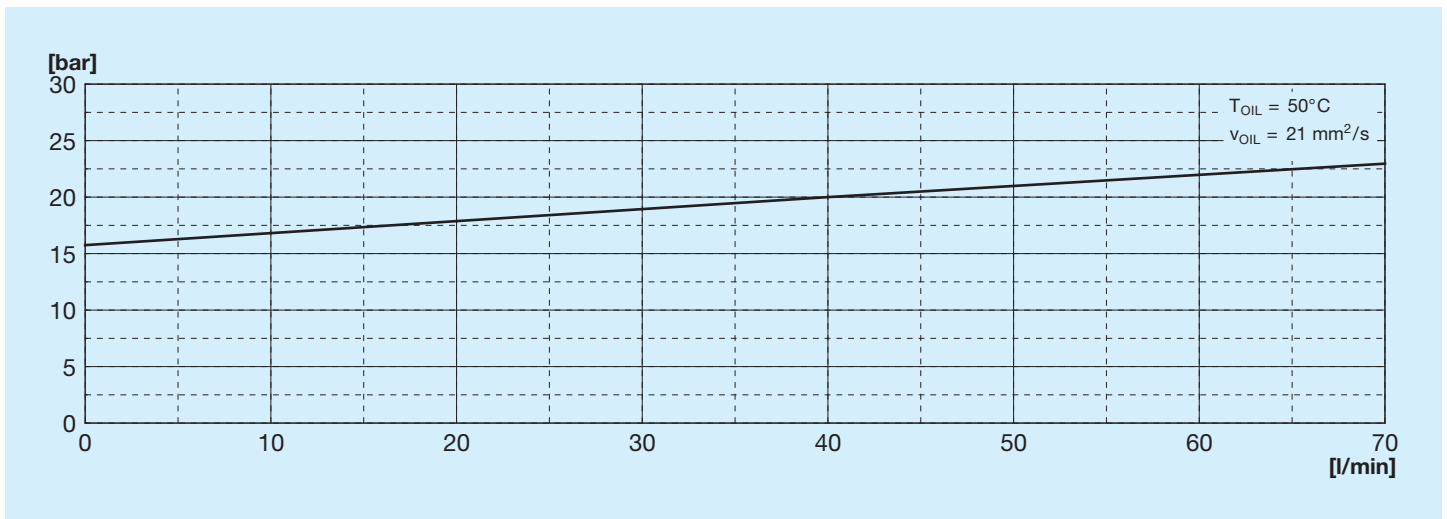
Portata nominale	<b>70 l/min</b> <b>18,48 US gpm</b>
Pressione nominale	<b>250 bar</b> <b>3625 psi</b>
Contropressione massima allo scarico	<b>50 bar</b> <b>725 psi</b>
Temperatura di utilizzo	<b>-20°C +85°C NBR seals</b> <b>(max peak +100°C)</b> <b>-20°C + 130°C HNBR seals</b>
Viscosità olio di esercizio	<b>da 15 mm<sup>2</sup>/s a 90 mm<sup>2</sup>/s</b> <b>(15 cSt a 90 cSt)</b>
Fluido	<b>Fluidi idraulici definiti dalla norma ISO 6743-4</b>
Massa	<b>2 Kg</b> <b>4,4 lb</b>
Interfaccia	<b>IBW0511</b>



## Dimensioni d'ingombro



## Perdite di carico P-T



**Filettatura bocca P**

Codice	Tipo	Serraggio Nm
<b>A</b>	3/8" GAS ISO 1179	35
<b>B</b>	1/2" GAS ISO 1179	70
<b>C</b>	M18x1,5 ISO 9974	40
<b>N</b>	M22x1,5 ISO 9974	78
<b>W</b>	M18x1,5 ISO 6149	40
<b>J</b>	M22x1,5 ISO 6149	60
<b>E</b>	3/4" - 16 SAE ISO 11926	50
<b>R</b>	7/8" - 14 SAE ISO 11926	77

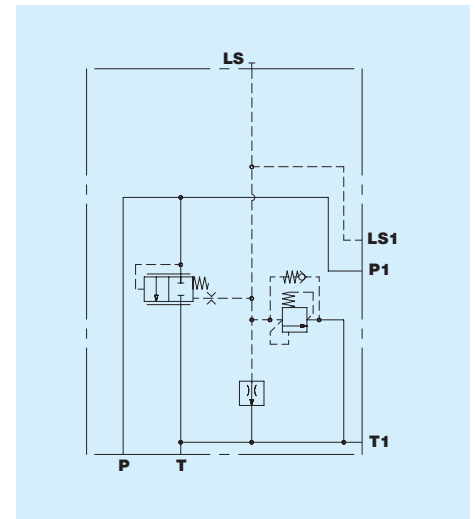
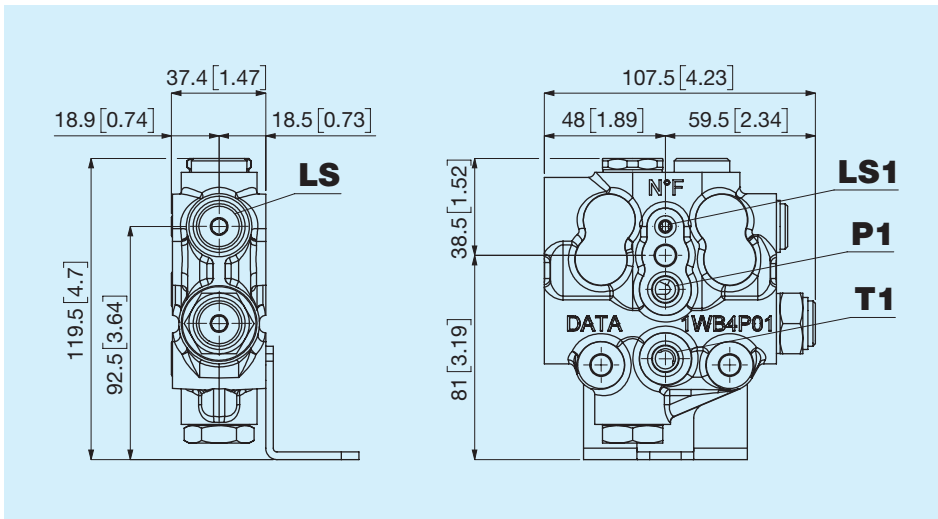
**Filettatura bocca T**

Codice	Tipo	Serraggio Nm
<b>A</b>	3/8" GAS ISO 1179	35
<b>B</b>	1/2" GAS ISO 1179	70
<b>C</b>	M18x1,5 ISO 9974	40
<b>N</b>	M22x1,5 ISO 9974	78
<b>W</b>	M18x1,5 ISO 6149	40
<b>J</b>	M22x1,5 ISO 6149	60
<b>E</b>	3/4" - 16 SAE ISO 11926	50
<b>R</b>	7/8" - 14 SAE ISO 11926	77

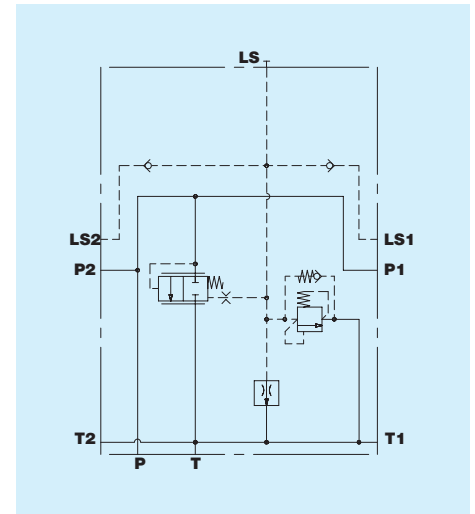
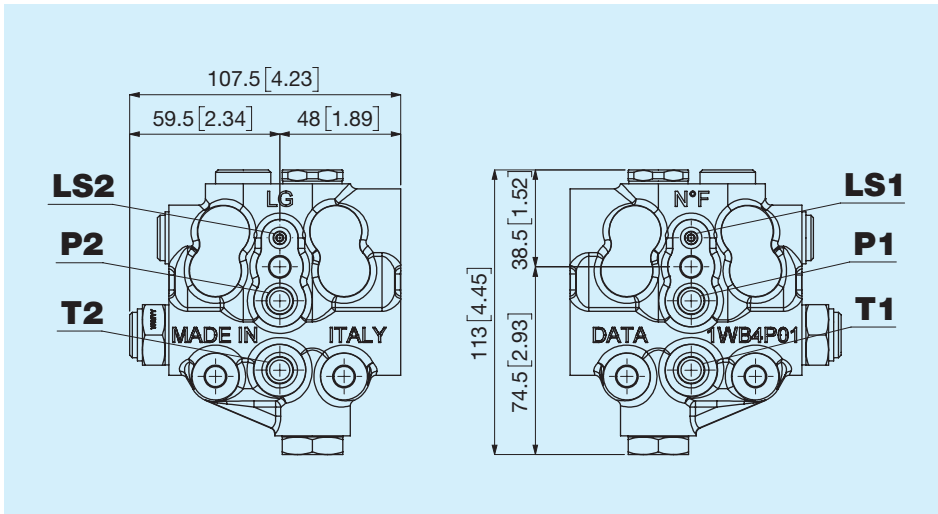
**Filettatura bocca LS**

Codice	Tipo	Serraggio Nm
<b>L</b>	1/4" GAS ISO 1179	14
<b>3</b>	M14x1,5 ISO 9974	10
<b>K</b>	M14x1,5 ISO 6149	10
<b>P</b>	9/16" - 18 SAE ISO 11926	21

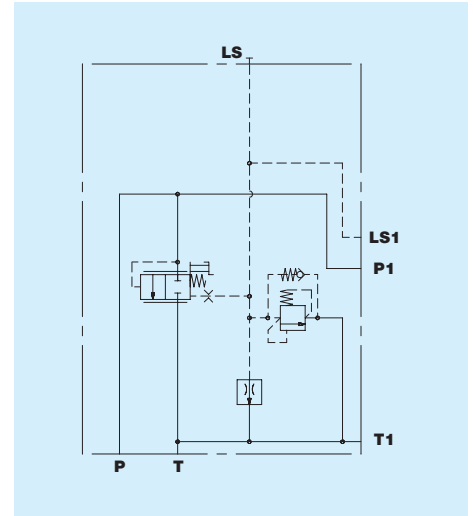
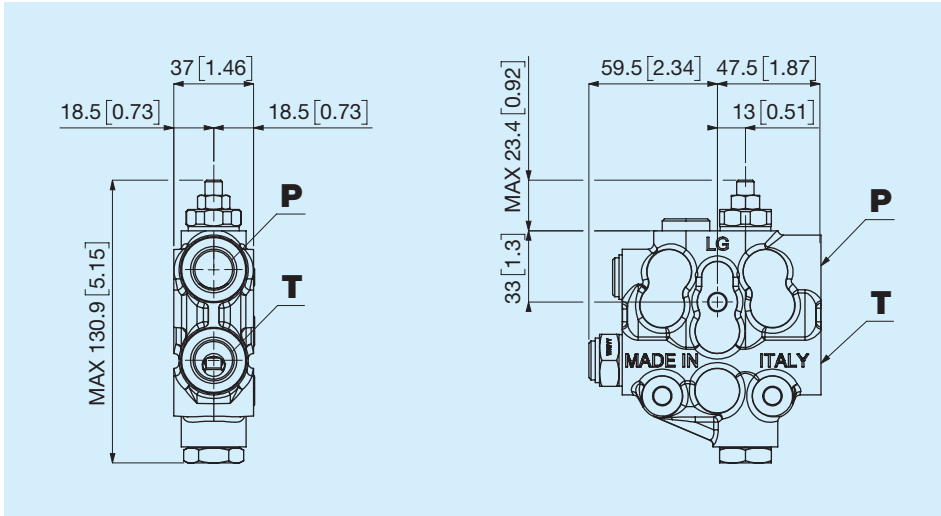
## S Standard



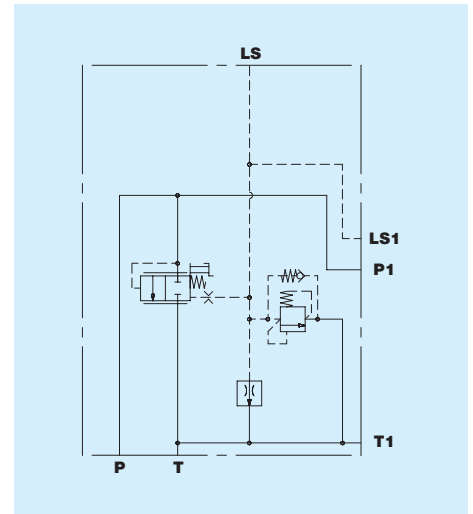
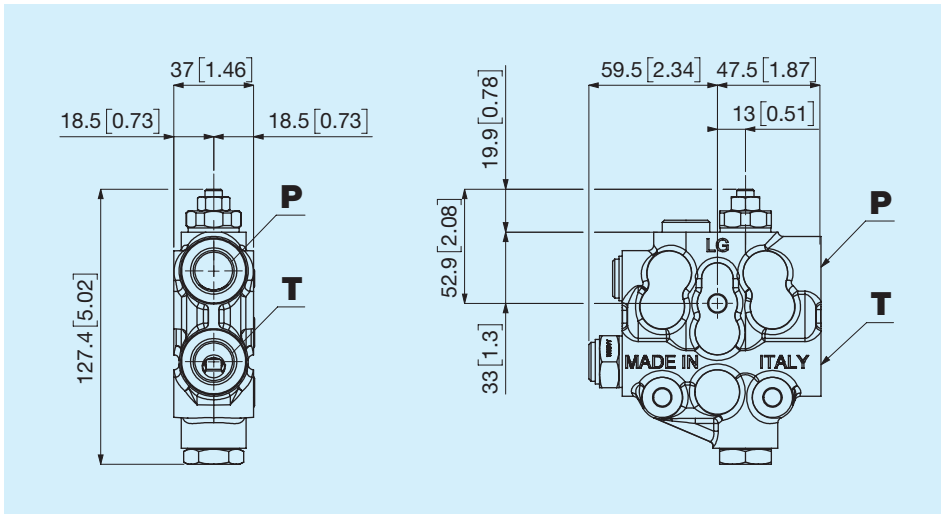
## A P-T-LS passanti



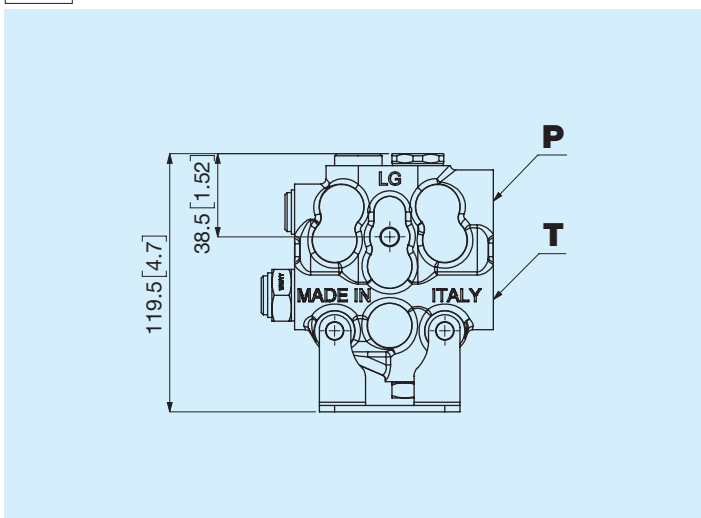
## Centro Aperto - Pompa fissa



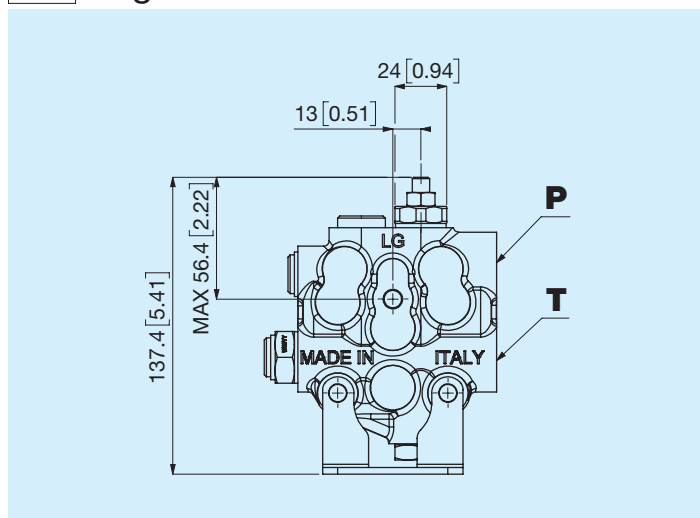
## Centro Chiuso - Pompa Load sensing



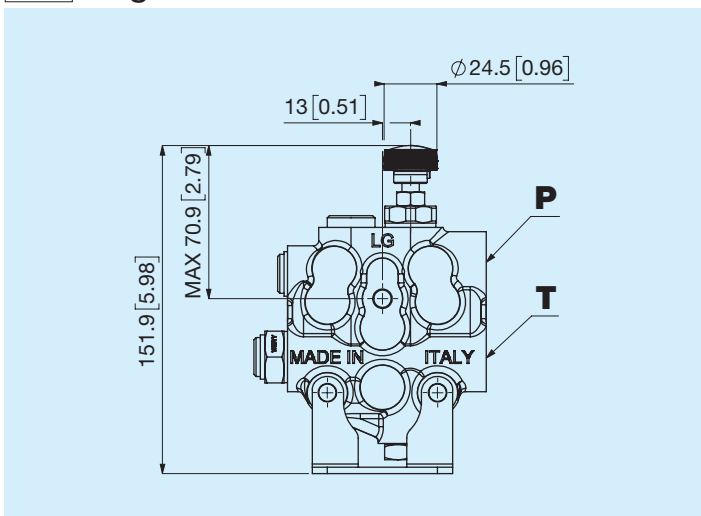
## N Nessuna



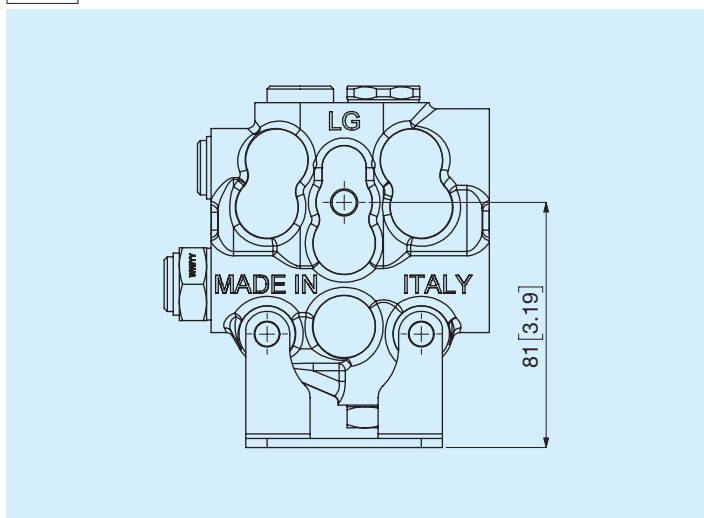
## R Regolazione a Grano



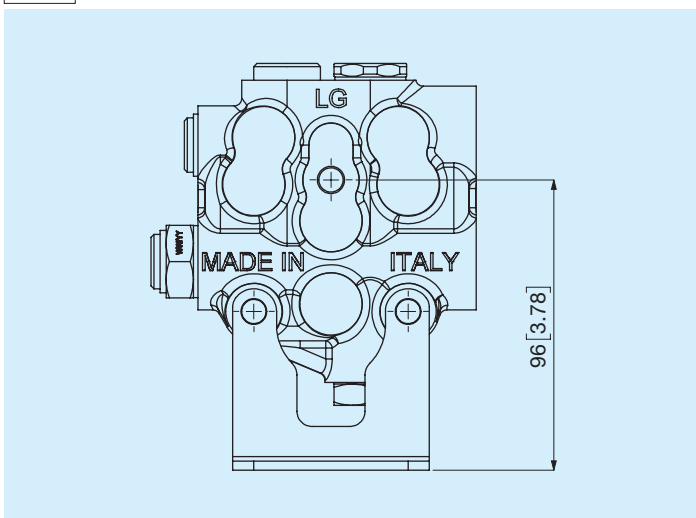
## V Regolazione con Volantino



**H2** Standard

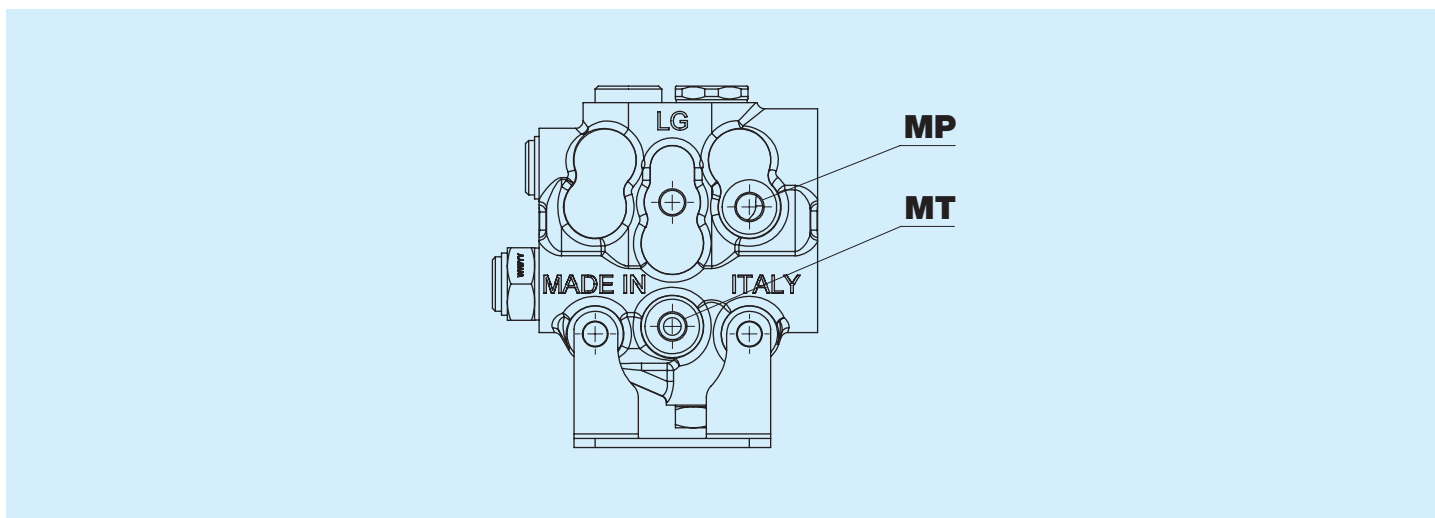


**H3** Alta





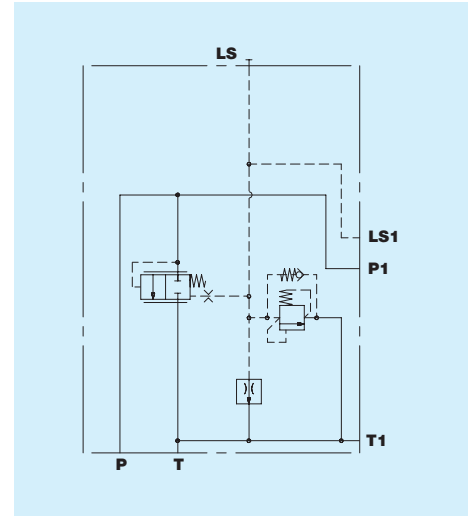
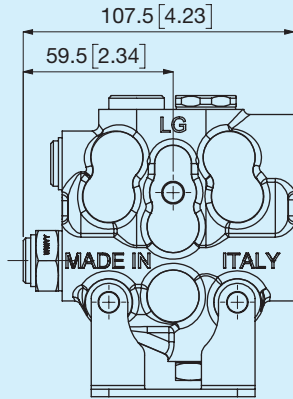
## MP e MT - Prese manometriche



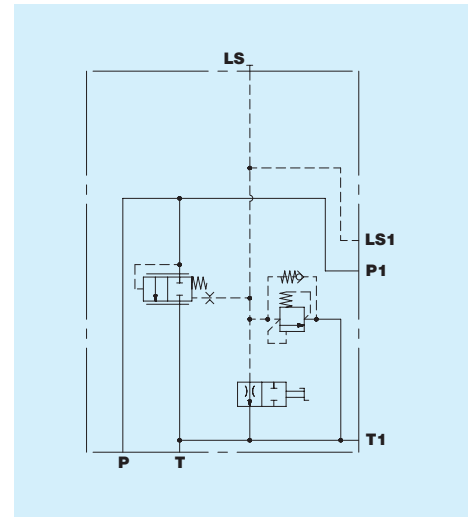
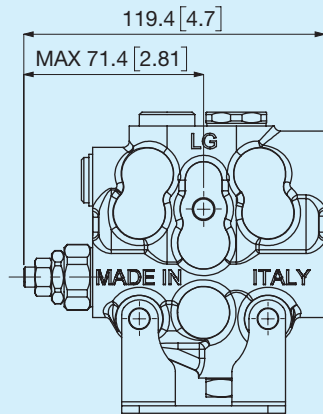
## Filettatura bocche MP e MT

Codice	Tipo	Serraggio Nm
<b>N</b>	Nessuna lavorazione	
<b>Q</b>	1/8" GAS ISO 1179	12

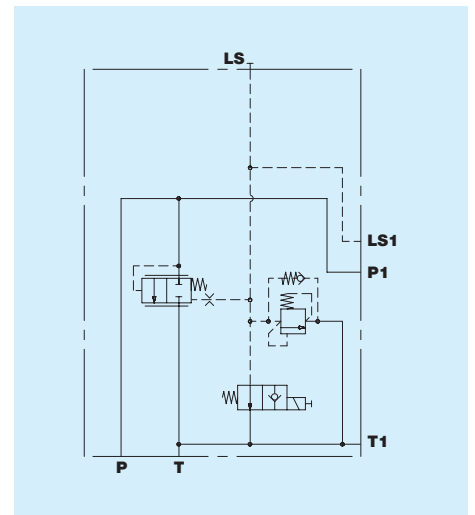
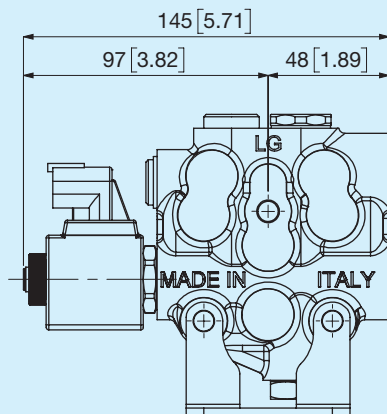
## I Orifizio compensato

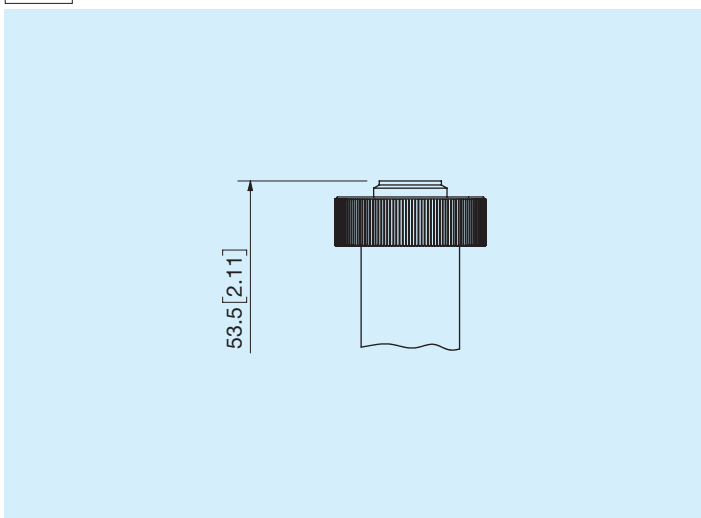
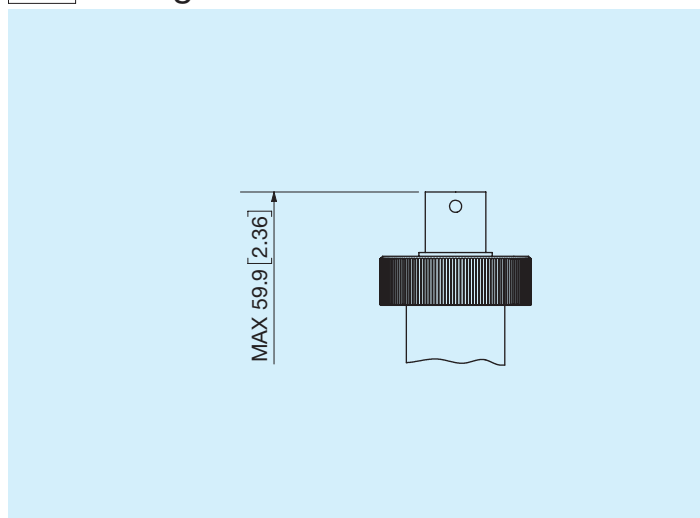


## L Orifizio compensato ON-OFF



## G Con valvola di messa a scarico



**O** Terminale standard**S** Emergenza a vite

	1	2	3	4	5	6	7	8	9	10	11	12	13	14	15	16
<b>TE05C</b>																
1	<b>Tipo di filetto</b>															
	<b>F</b> Femmina				<b>M</b> Maschio											
2	<b>Filettatura bocca P</b>															
	<b>A</b> 3/8" GAS ISO 1179				<b>C</b> M18x1,5 ISO 9974				<b>W</b> M18x1,5 ISO 6149				<b>E</b> 3/4" - 16 SAE ISO 11926			
	<b>B</b> 1/2" GAS ISO 1179				<b>N</b> M22x1,5 ISO 9974				<b>J</b> M22x1,5 ISO 6149				<b>R</b> 7/8" - 14 SAE ISO 11926			
3	<b>Filettatura bocca T</b>															
	<b>A</b> 3/8" GAS ISO 1179				<b>C</b> M18x1,5 ISO 9974				<b>W</b> M18x1,5 ISO 6149				<b>E</b> 3/4" - 16 SAE ISO 11926			
	<b>B</b> 1/2" GAS ISO 1179				<b>N</b> M22x1,5 ISO 9974				<b>J</b> M22x1,5 ISO 6149				<b>R</b> 7/8" - 14 SAE ISO 11926			
4	<b>Filettatura bocca LS</b>															
	<b>L</b> 1/4" GAS ISO 1179				<b>3</b> M14x1,5 ISO 9974				<b>K</b> M14x1,5 ISO 6149				<b>P</b> 9/16" - 18 SAE ISO 11926			
5	<b>Opzioni su bocche P - T - LS</b>															
	<b>A</b> P-T-LS aperti				<b>C</b> P aperto, T-LS tappati				<b>E</b> P-LS tappati, T aperto							
	<b>B</b> P-T aperti, LS tappato				<b>D</b> P-LS aperti, T tappato											
6	<b>Opzioni linee P-T-LS</b>															
	<b>S</b> Standard				<b>A</b> P-T-LS passanti				<b>B</b> Con TE05P							
7	<b>Opzione compensatore principale</b>															
	<b>N</b> Nessuna				<b>R</b> Regolazione a Grano				<b>V</b> Regolazione con Volantino							
8 9	<b>Altezza della staffa</b>															
	<b>H2</b> Standard				<b>H3</b> Alta				<b>N</b> Nessuna							
10	<b>Filettatura bocca MP</b>															
	<b>N</b> Nessuna				<b>Q</b> 1/8" GAS ISO 1179											
11	<b>Filettatura bocca MT</b>															
	<b>N</b> Nessuna				<b>Q</b> 1/8" GAS ISO 1179											
12	<b>Opzioni bocche MP - MT</b>															
	<b>N</b> Nessuna				<b>C</b> MP non lavorato, MT aperto				<b>F</b> MP e MT tappati							
	<b>A</b> MP aperto, MT non lavorato				<b>D</b> MP non lavorato, MT tappato				<b>G</b> MP aperto, MT tappato							
	<b>B</b> MP tappato, MT non lavorato				<b>E</b> MP e MT aperti				<b>H</b> MP tappato, MT aperto							
13	<b>Tipo valvola messa a scarico linea LS</b>															
	<b>I</b> Orifizio compensato				<b>A</b> 12V DIN 43650				<b>G</b> 12V Deutsch							
	<b>L</b> Orifizio compensato ON-OFF				<b>B</b> 24V DIN 43650				<b>H</b> 24V Deutsch							

17



14



## Emergenza valvola messa a scarico linea LS

**N** Nessuna      **O** Terminale standard      **S** Emergenza a vite

15 16



## Tipo valvola di massima pressione

<b>00</b> Tappo sostitutivo VMP	<b>10</b> 100 bar	<b>16</b> 160 bar	<b>22</b> 220 bar
<b>05</b> 50 bar	<b>11</b> 110 bar	<b>17</b> 170 bar	<b>23</b> 230 bar
<b>06</b> 60 bar	<b>12</b> 120 bar	<b>18</b> 180 bar	<b>24</b> 240 bar
<b>07</b> 70 bar	<b>13</b> 130 bar	<b>19</b> 190 bar	<b>25</b> 250 bar
<b>08</b> 80 bar	<b>14</b> 140 bar	<b>20</b> 200 bar	
<b>09</b> 90 bar	<b>15</b> 150 bar	<b>21</b> 210 bar	

17



## Trattamento esterno

**A** Trattamento esterno      **N** Nessuno