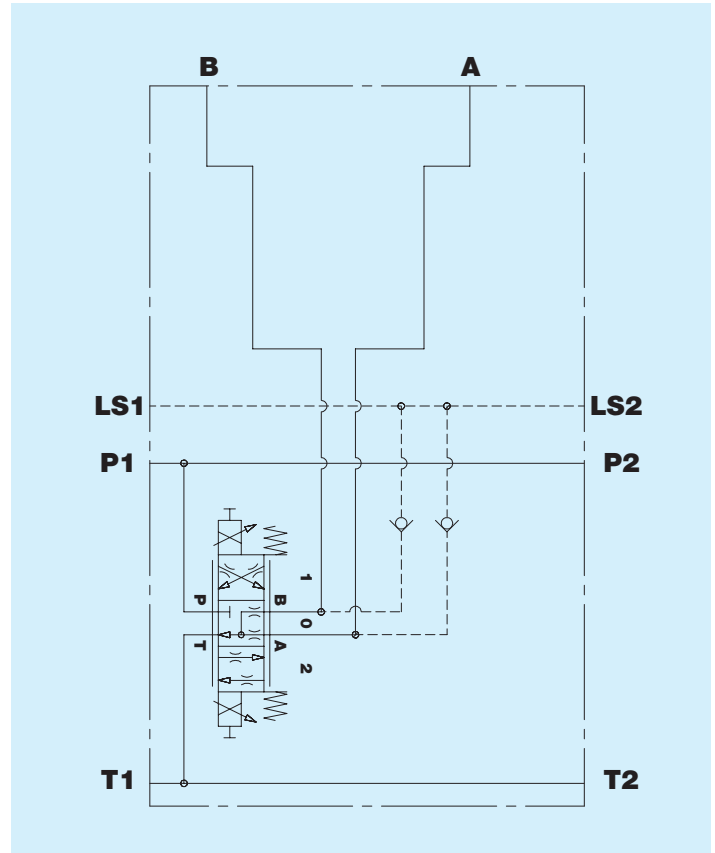


BW1033BP Elemento 4/3 Proporzionale Load sensing
Interfaccia IBW1033

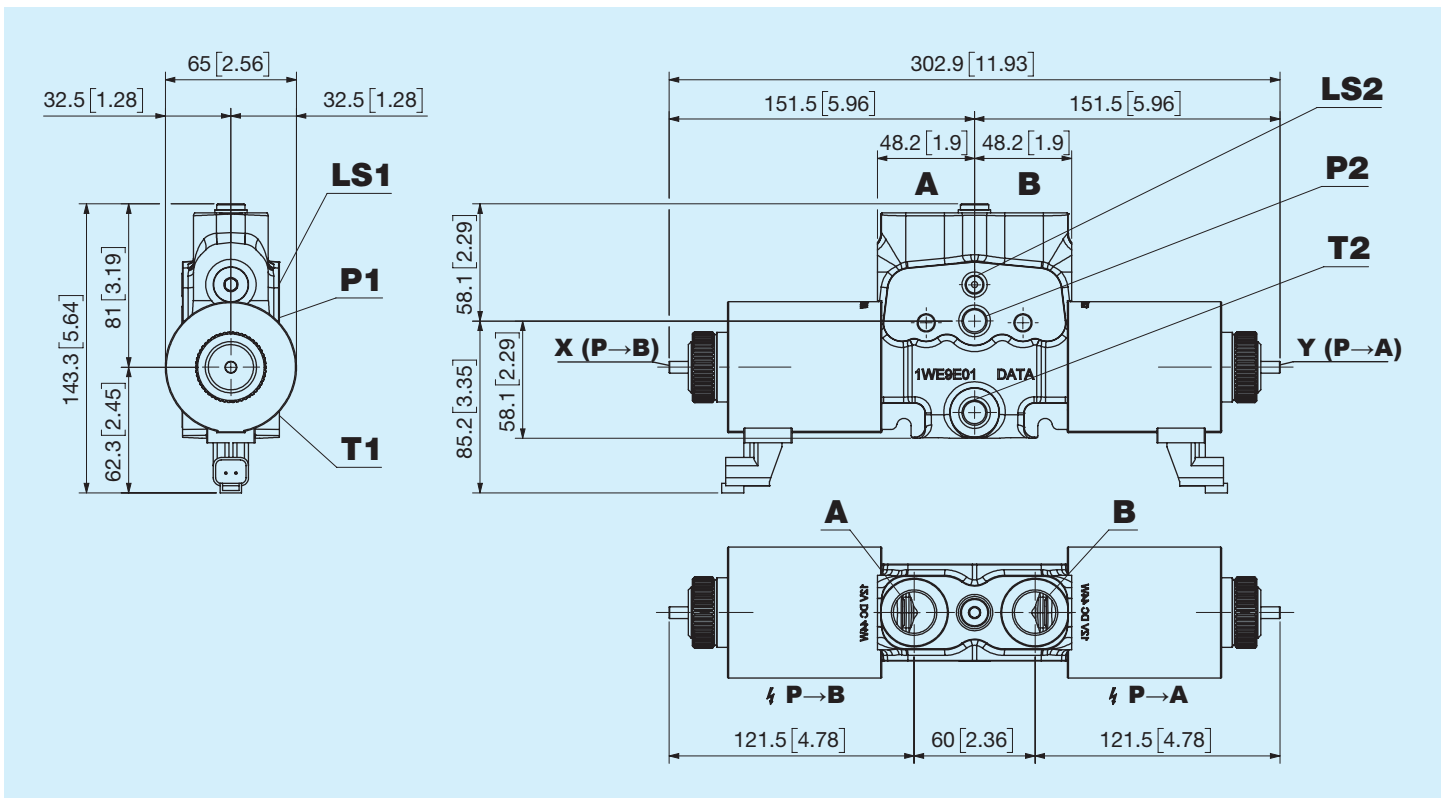


Prima di iniziare l'utilizzo leggere attentamente il documento ISTRUZIONI GENERALI D'IMPIEGO PER LE VALVOLE DI CONTROLLO DIREZIONALE

Portata nominale	85 l/min - $\Delta P=18$ bar 22,46 US gpm - $\Delta P=261$ psi
Pressione nominale	250 bar 3625 psi
Contropressione massima allo scarico	50 bar 725 psi
Temperatura di utilizzo	-20°C +85°C NBR seals (max peak +100°C) -20°C + 130°C HNBR seals
Viscosità olio d	da 15 mm²/s a 90 mm²/s (15 cSt a 90 cSt)
Fluido	Fluidi idraulici definiti dalla norma ISO 6743-4
Massa	4,5 Kg 9,88 lb
Interfaccia	IBW1033
Isteresi	<10%

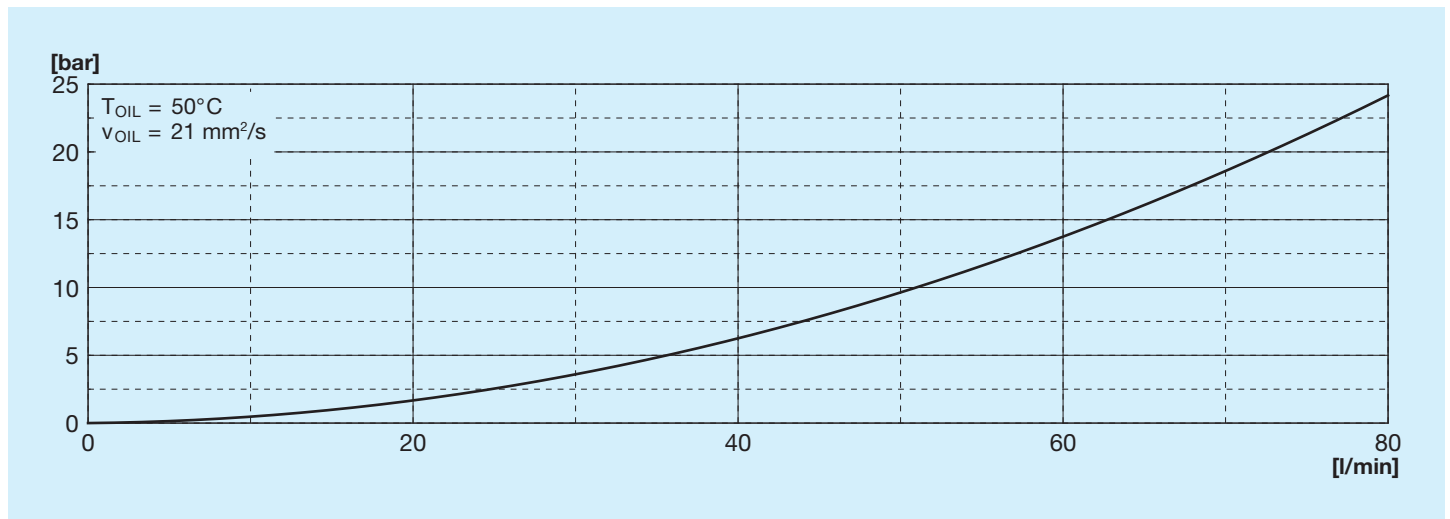


Dimensioni d'ingombro

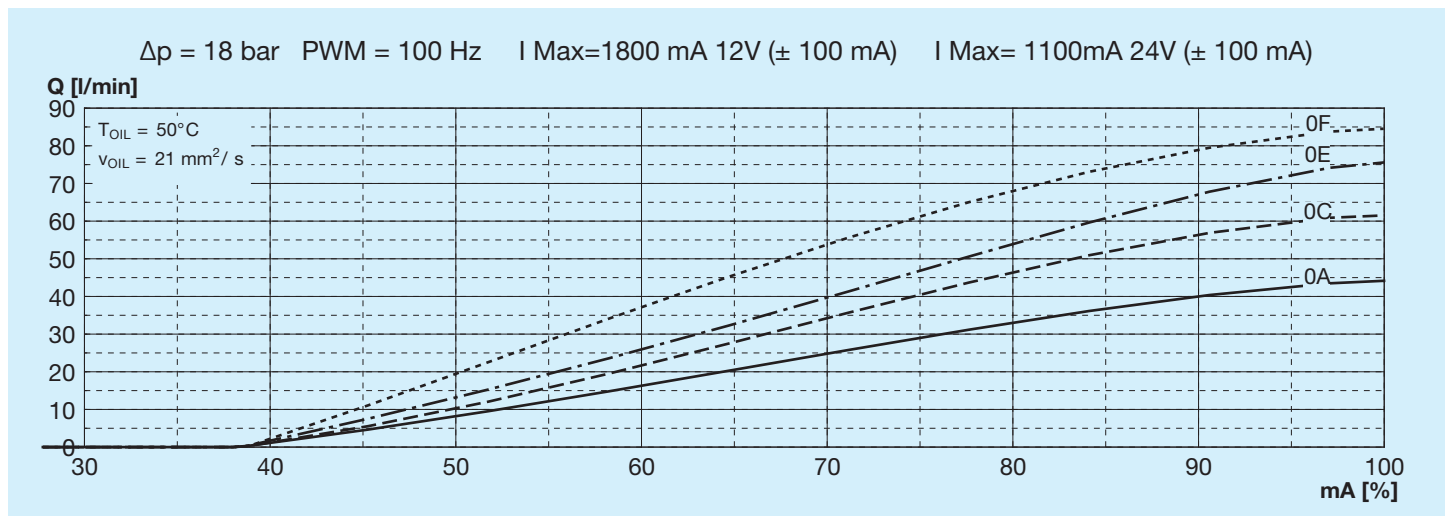


X - Y = Emergenza a pulsante in spinta

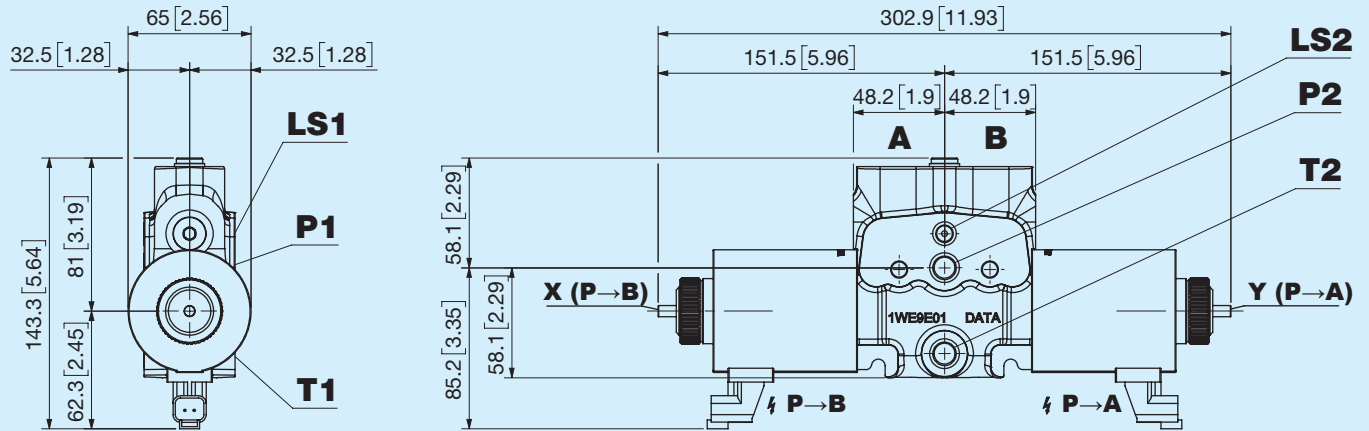
Curva caratteristica A/B-T



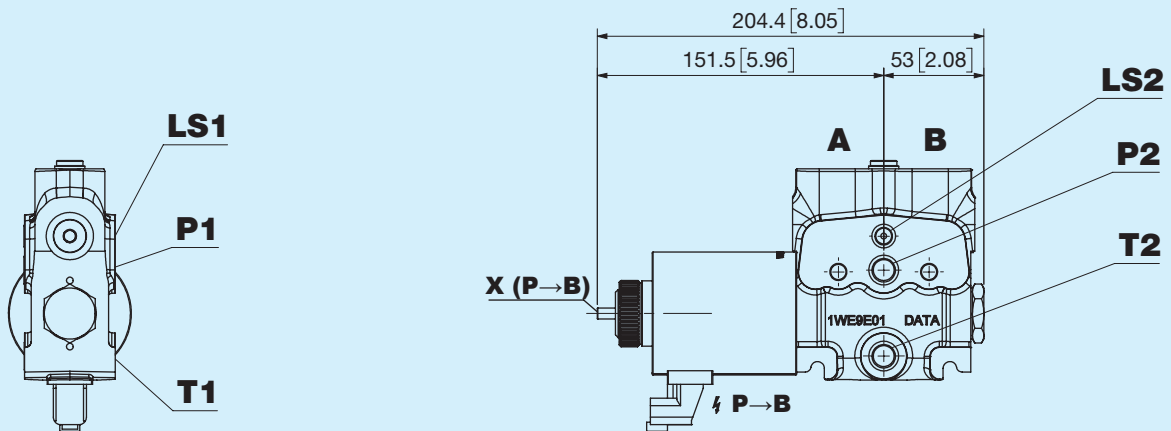
Curva caratteristica Metering



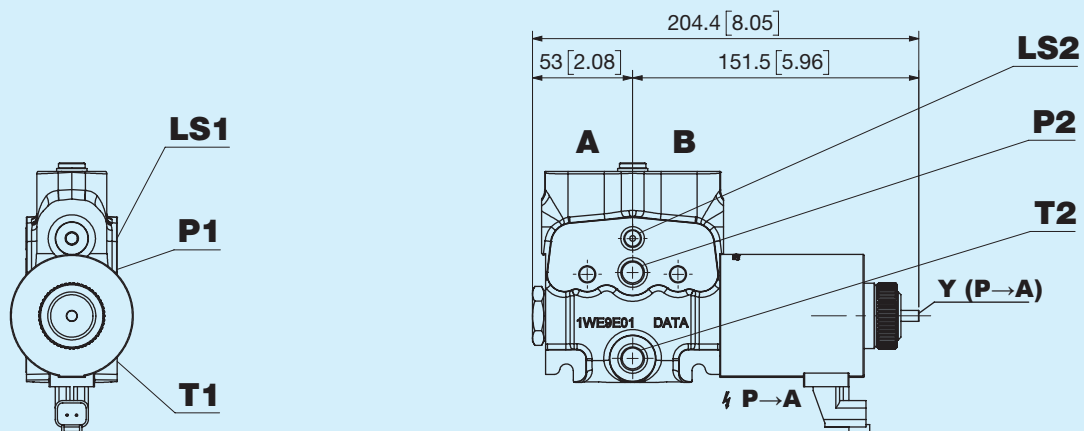
A Due bobine bocca lato A e B



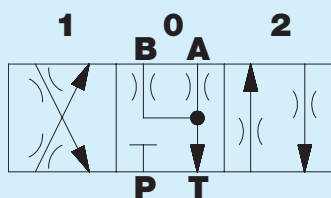
E Una bobina lato bocca A



F Una bobina lato bocca B



003 Circuito

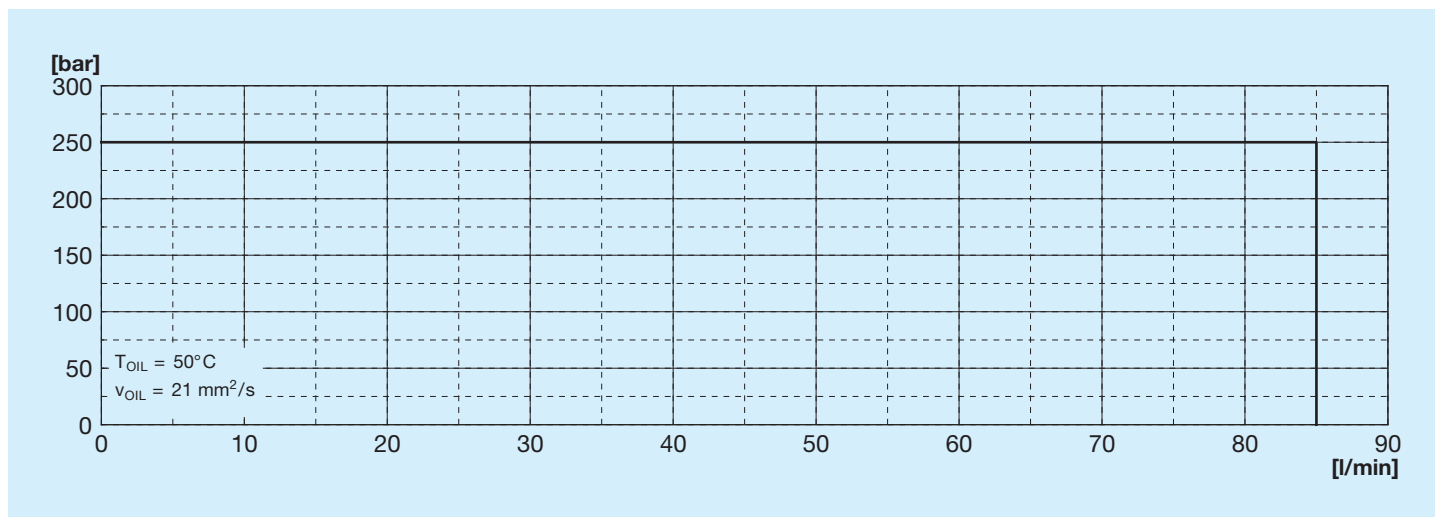


1	0	2
P → A B → T	A, B → T P —	P → B A → T

Portata

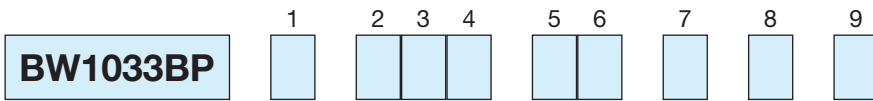
Codice	l/min	US gpm
0A	45	11,89
0B	50	13,21
0C	60	15,85
0D	70	18,49
0E	75	19,81
0F	85	22,45

Limiti di impiego per circuito



Filettatura bocche A e B

Codice	Tipo	Serraggio Nm
B	1/2" GAS ISO 1179	70
N	M22x1,5 ISO 9974	78
J	M22x1,5 ISO 6149	78
R	7/8" - 14 SAE ISO 11926	77



1	Configurazioni
<input type="checkbox"/>	A Due bobine bocca lato A e B E Una bobina lato bocca A F Una bobina lato bocca B
2 3 4	Circuiti
<input type="checkbox"/> <input type="checkbox"/> <input type="checkbox"/>	003 Circuito
5 6	Portata $\Delta P = 18$ bar
<input type="checkbox"/> <input type="checkbox"/>	0A 45 l/min - 11,89 US gpm 0C 60 l/min - 15,85 US gpm 0E 75 l/min - 19,81 US gpm 0B 50 l/min - 13,21 US gpm 0D 70 l/min - 18,49 US gpm 0F 85 l/min - 22,45 US gpm
7	Filettatura bocche A e B
<input type="checkbox"/>	B 1/2" GAS ISO 1179 N M22x1,5 ISO 9974 J M22x1,5 ISO 6149 R 7/8" - 14 SAE ISO 11926
8	Tensione e connettore
<input type="checkbox"/>	A 12V DIN 43650 B 24V DIN 43650 G 12V Deutsch H 24V Deutsch
9	Trattamento esterno
<input type="checkbox"/>	A Trattamento esterno N Nessuno