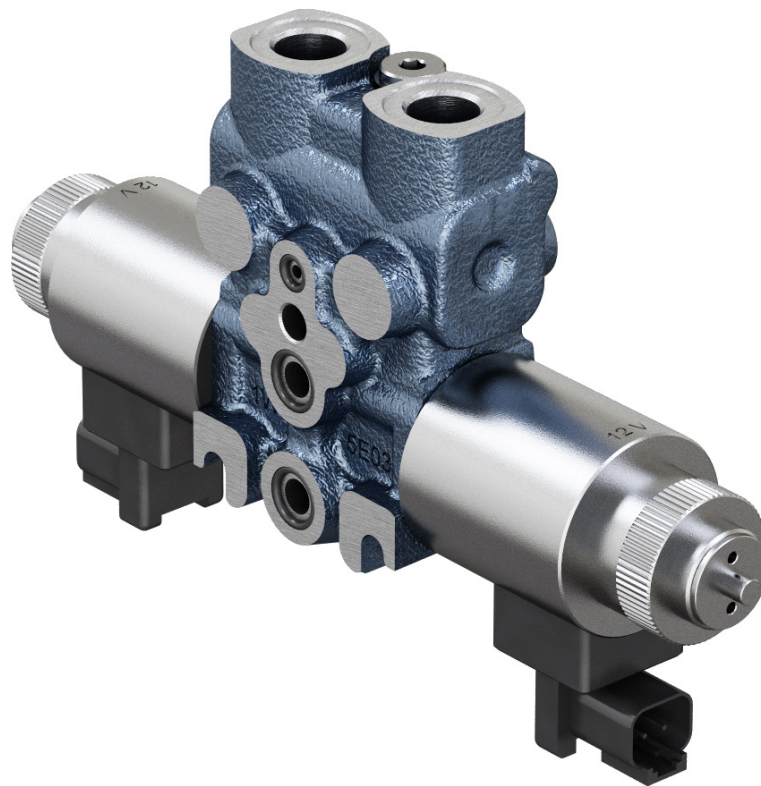
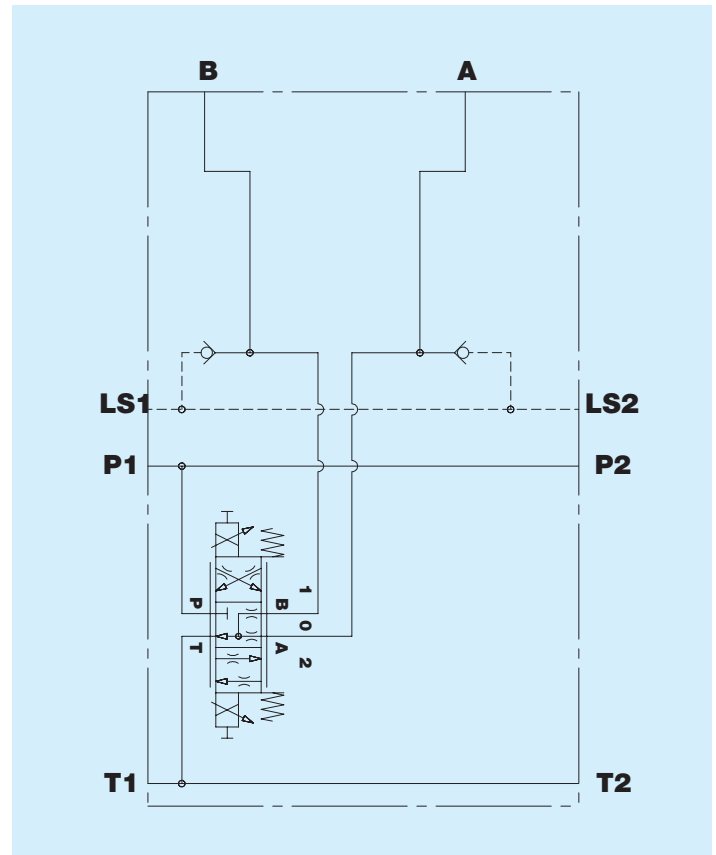


BW0511LP Elemento largo 4/3 proporzionale con
segnale Load Sensing
Interfaccia IBW0511

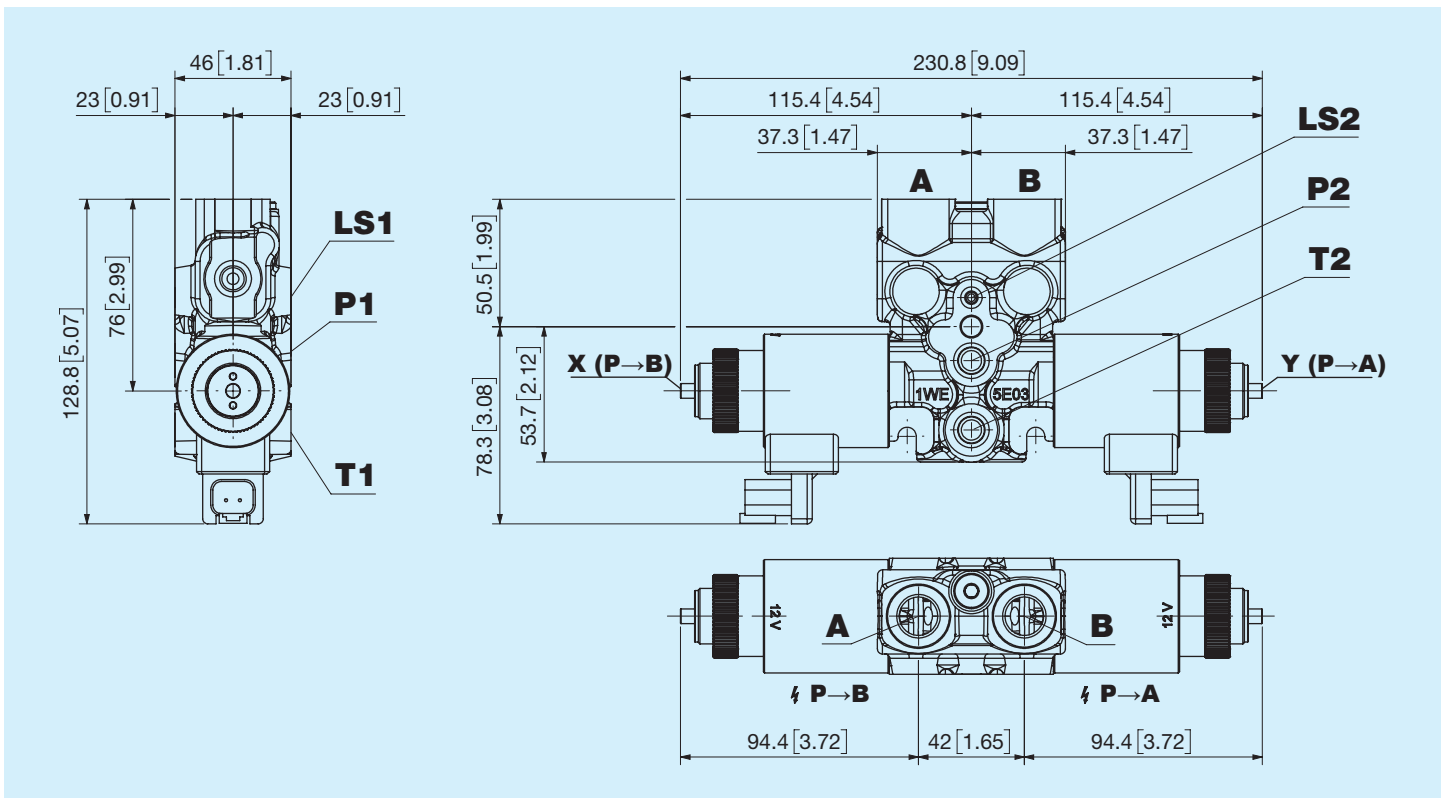


Prima di iniziare l'utilizzo leggere attentamente il documento ISTRUZIONI GENERALI D'IMPIEGO PER LE VALVOLE DI CONTROLLO DIREZIONALE

Portata nominale	37 l/min - $\Delta P=18$ bar 9,77 US gpm - $\Delta P=261$ psi
Pressione nominale	250 bar 3625 psi
Contropressione massima allo scarico	50 bar 725 psi
Temperatura di utilizzo	-20°C +85°C NBR seals (max peak +100°C) -20°C + 130°C HNBR seals
Viscosità olio di esercizio	da 15 mm²/s a 90 mm²/s (15 cSt a 90 cSt)
Fluido	Fluidi idraulici definiti dalla norma ISO 6743-4
Massa	1,7 Kg 3,75 lb
Interfaccia	IBW0511
Isteresi	<10%

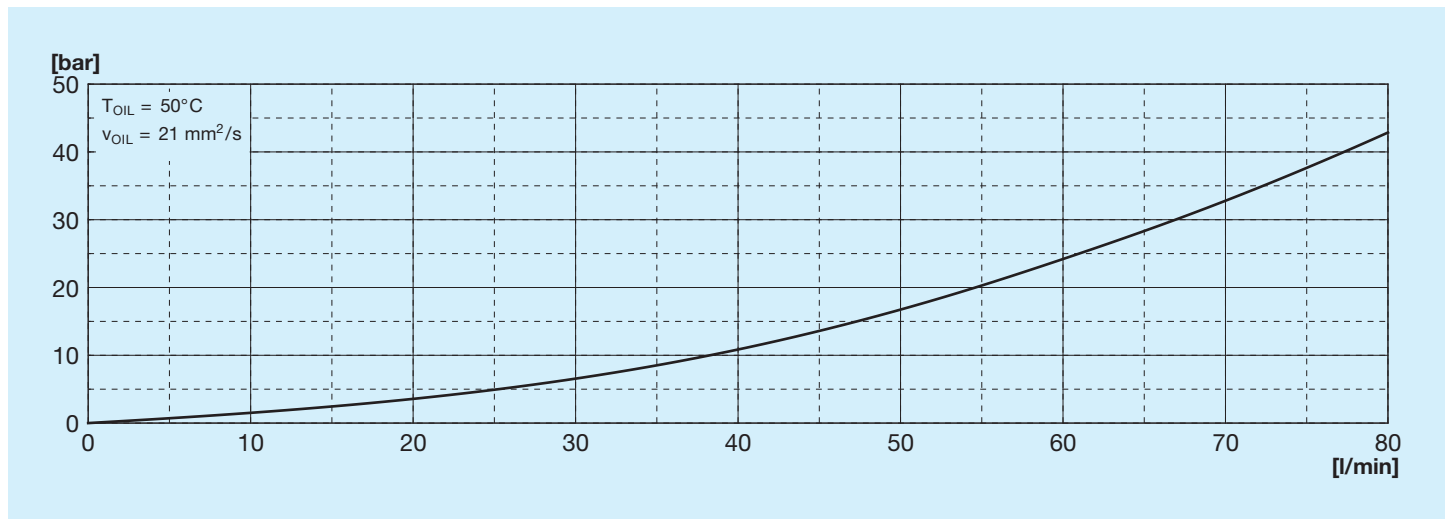


Dimensioni d'ingombro

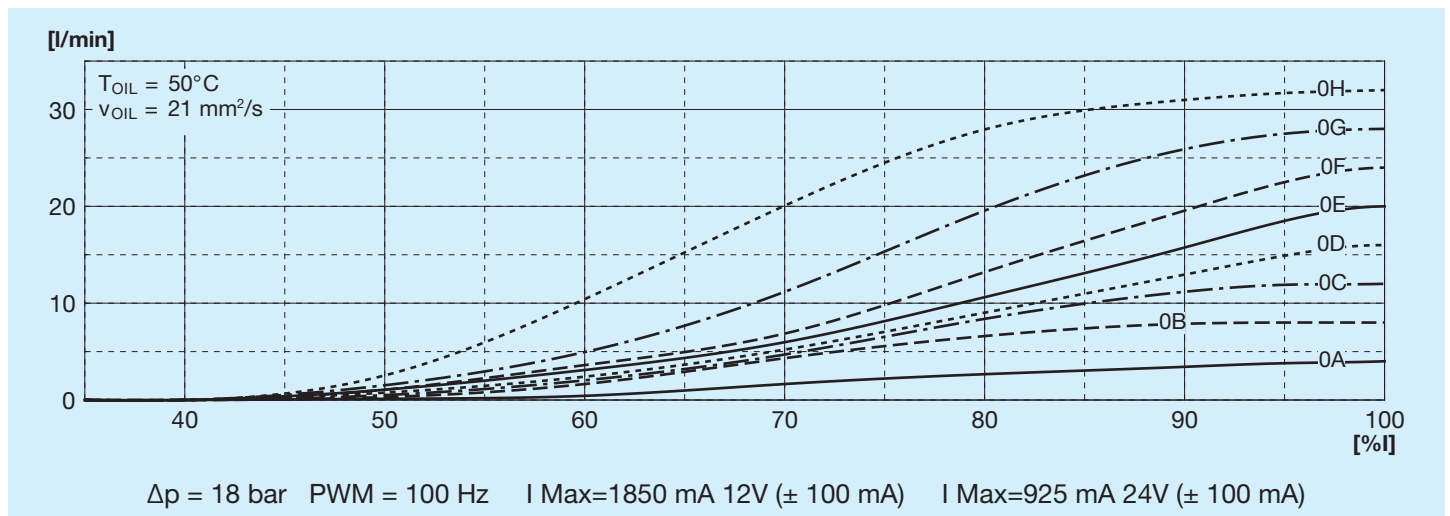


X - Y = Emergenza manuale in spinta

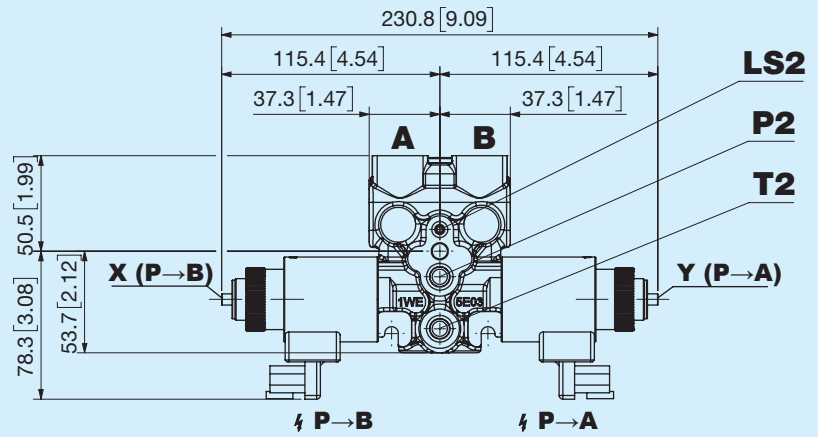
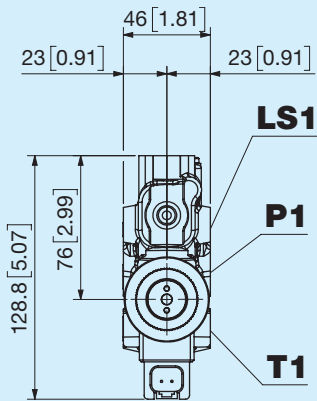
Curva caratteristica B-T



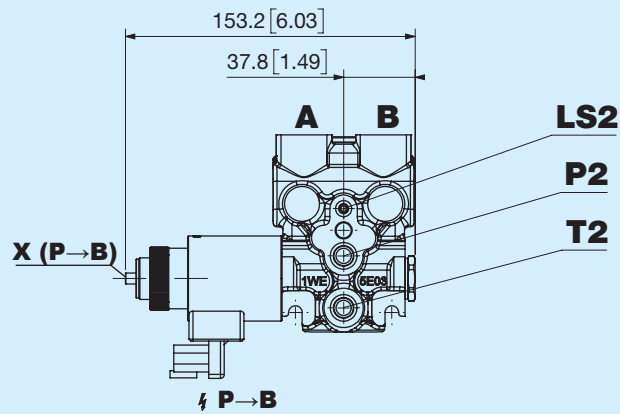
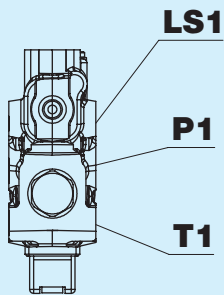
Curva caratteristica Metering



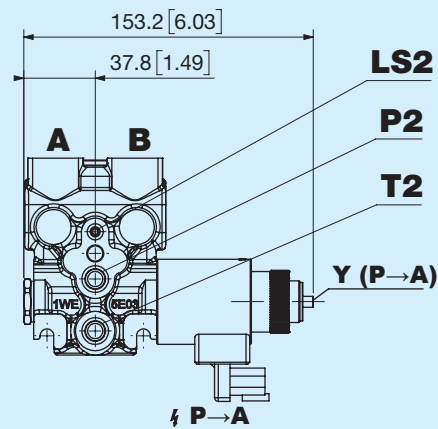
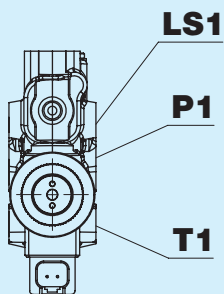
A Due bobine lato bocca A e B



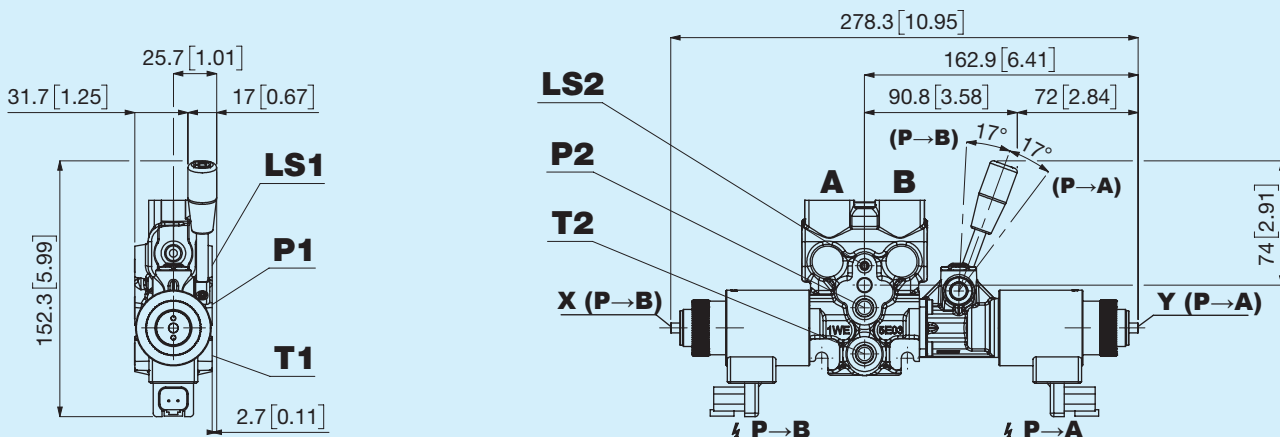
E Una bobina lato bocca A



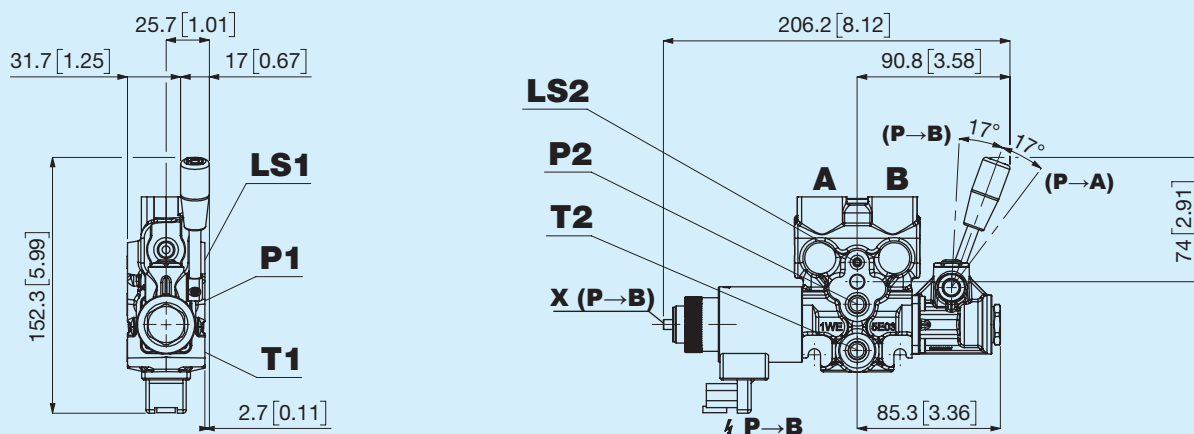
F Una bobina lato bocca B



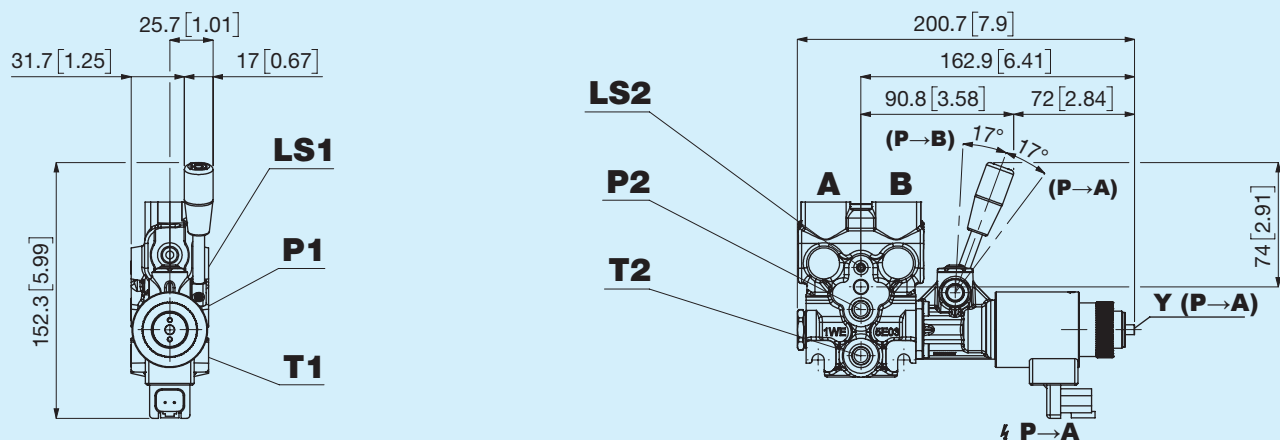
B Due bobine lato bocca A e B e leva di emergenza



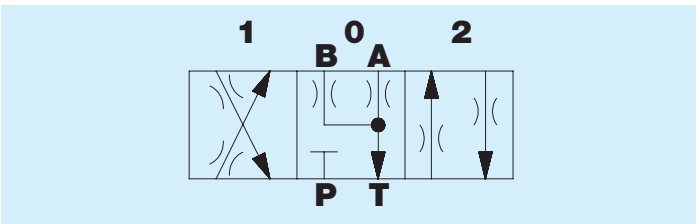
C Una bobina lato bocca A e leva di emergenza



D Una bobina lato bocca B e leva di emergenza



003 Circuito



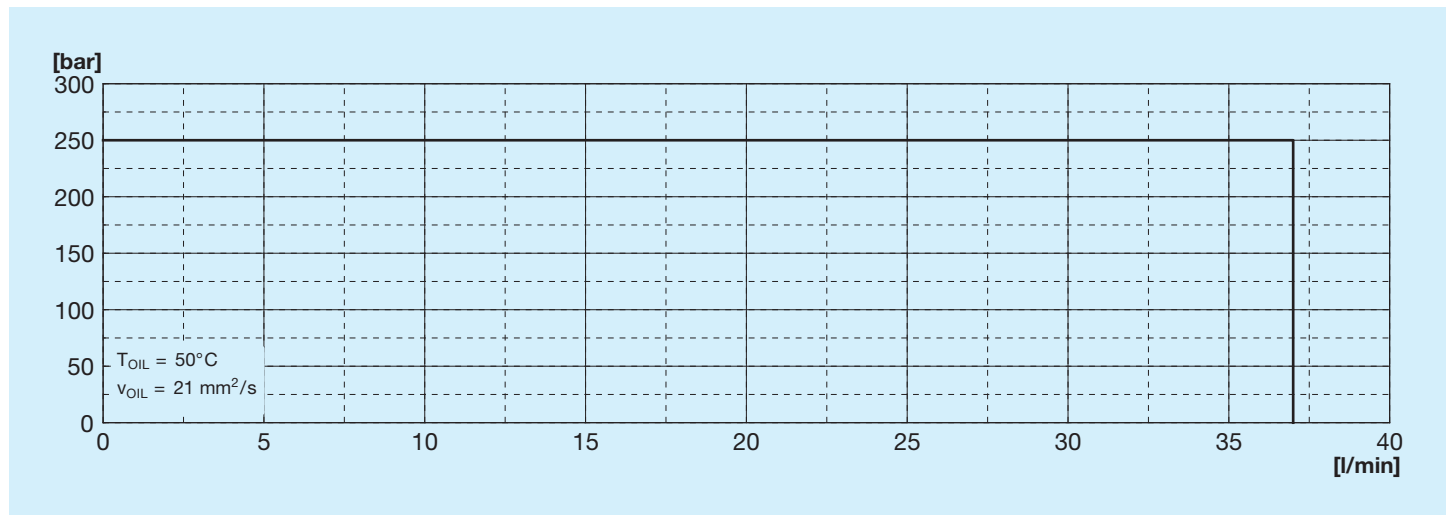
Posizioni

1	0	2
P→A B→T	B,A→T P—	P→B A→T

Portata

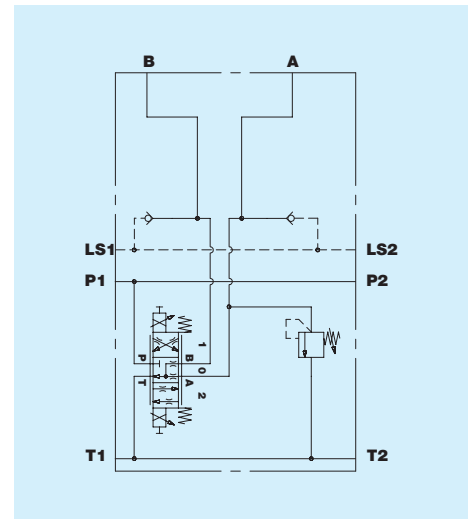
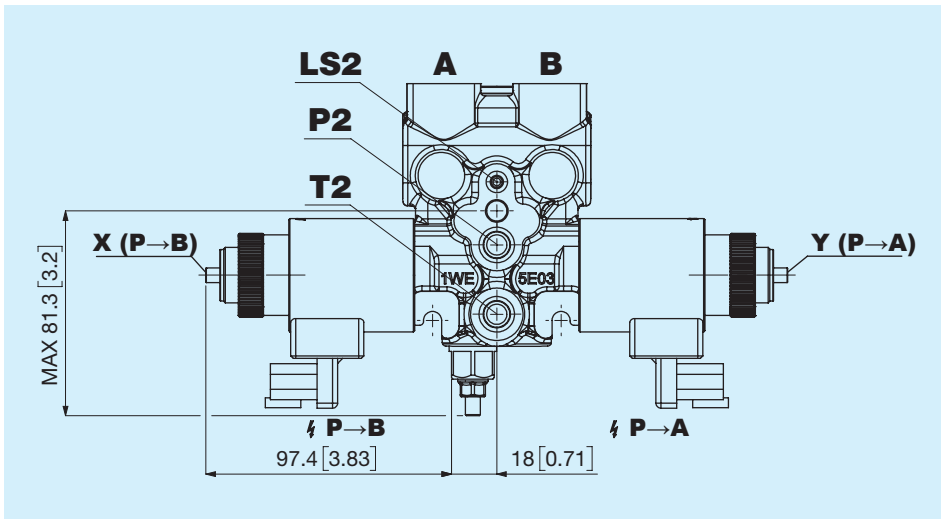
Codice	l/min	US gpm
0A	5,5	1,45
0B	11	2,90
0C	16	4,22
0D	21	5,54
0E	26	6,87
0F	31	8,19
0G	37	9,77

Limiti di impiego per circuito

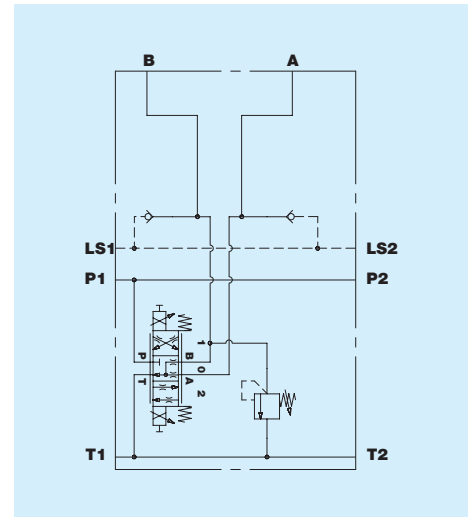
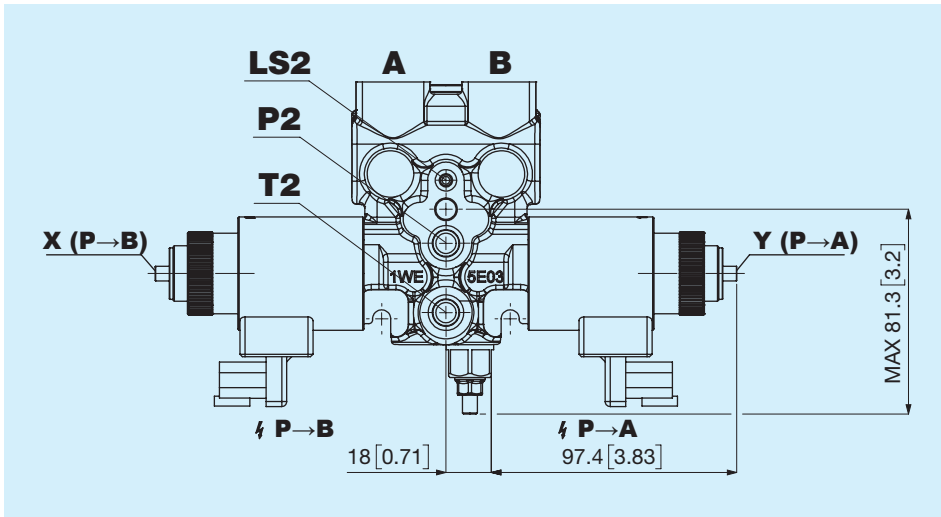


Codice	Tipo	Serraggio Nm
A	3/8" GAS ISO 1179	40
C	M18x1,5 ISO 9974	40
W	M18x1,5 ISO 6149	40
E	3/4" 16 SAE ISO 11926	45

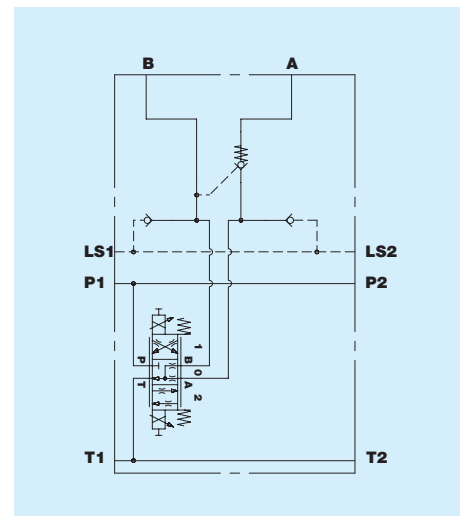
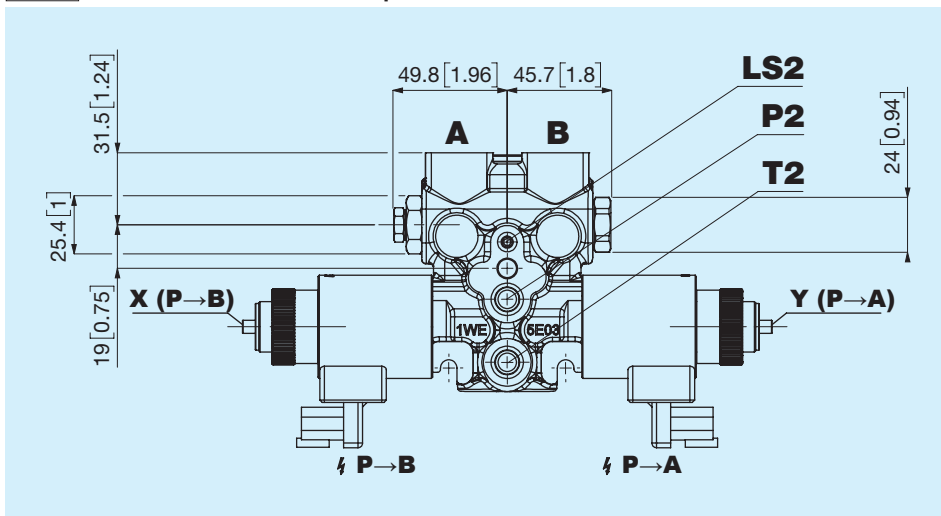
VL - Valvola limitatrice di pressione bocca A



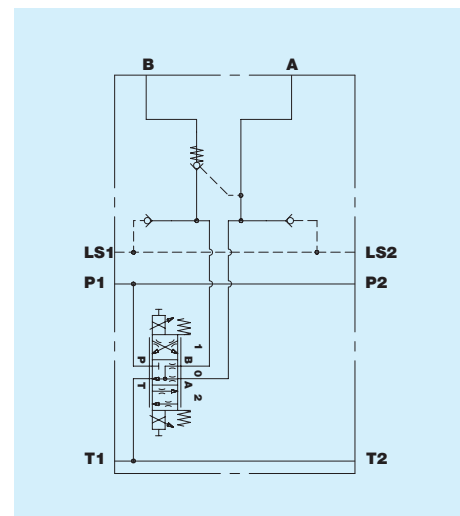
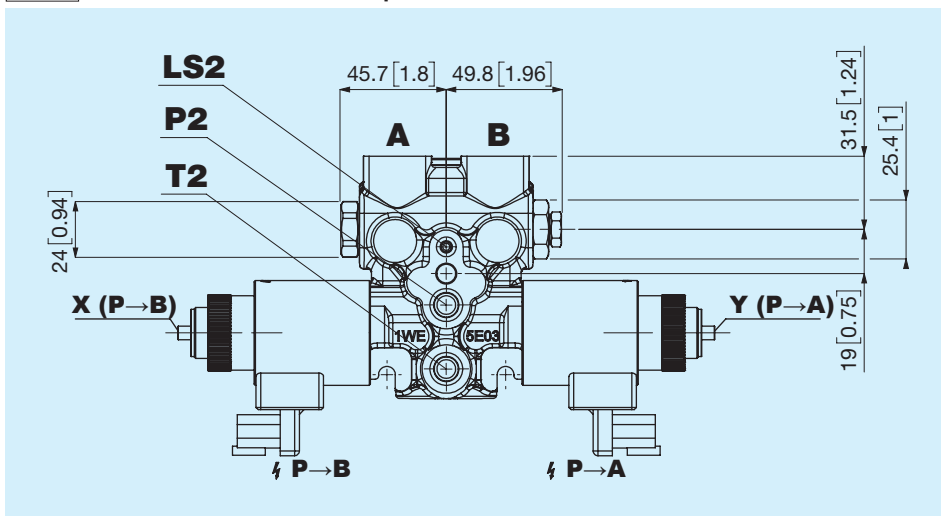
VL - Valvola limitatrice di pressione bocca B



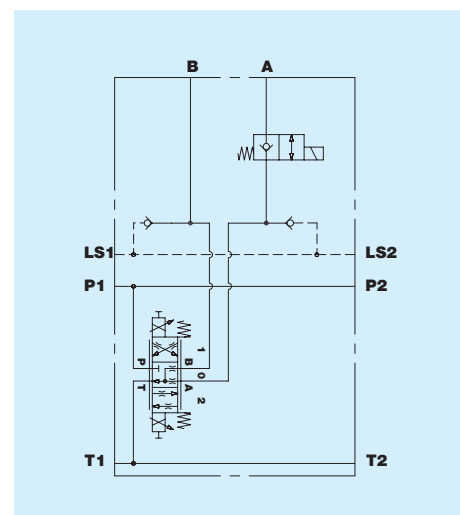
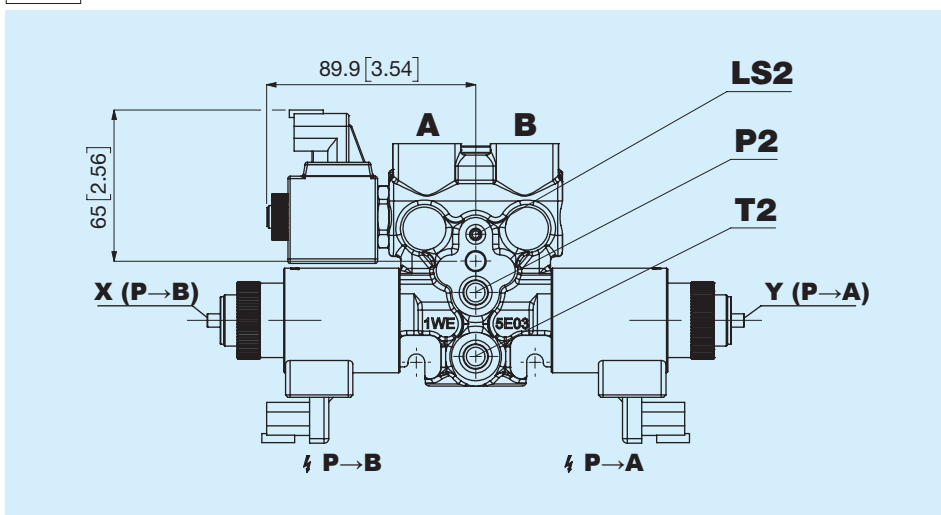
VB Valvola di blocco pilotata bocca A



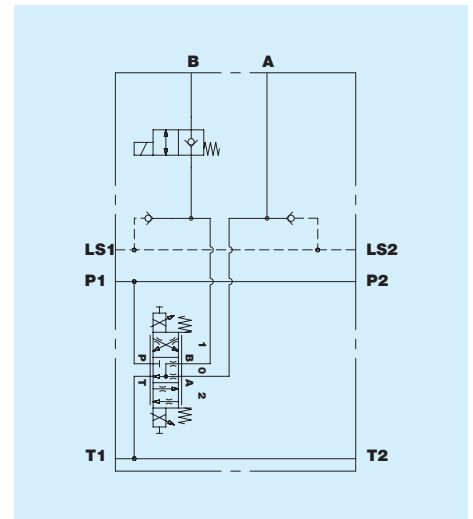
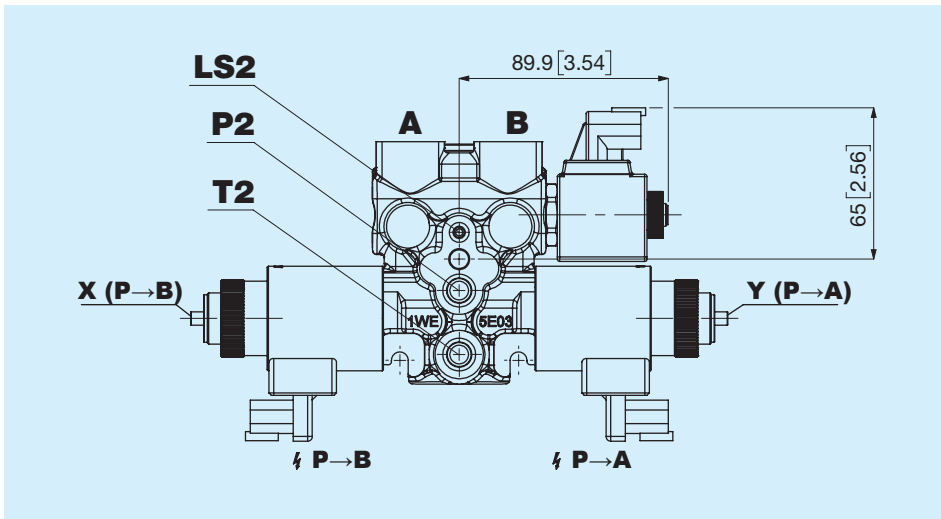
VB Valvola di blocco pilotata bocca B



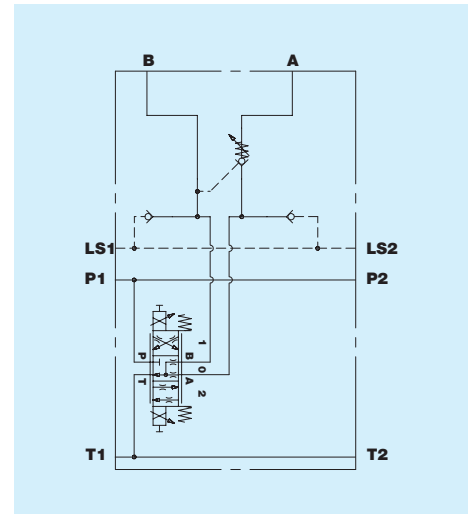
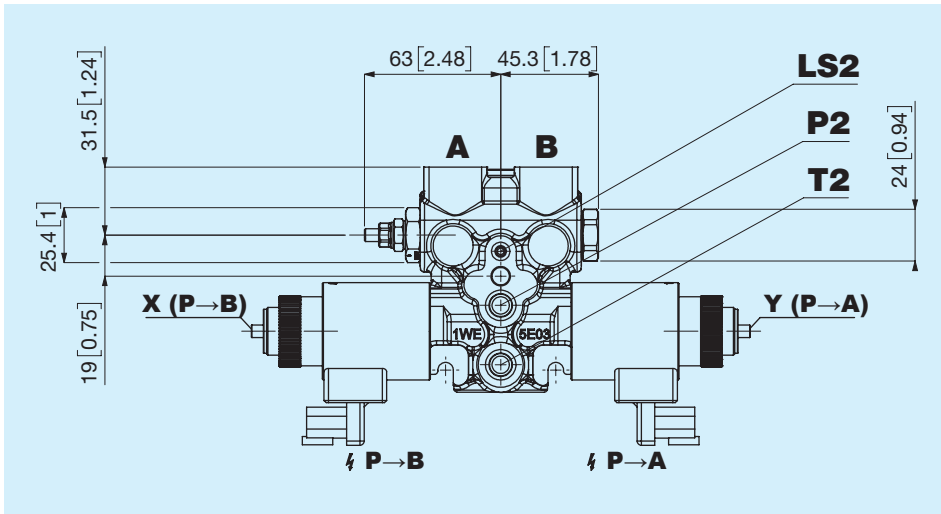
NE Elettrovalvola 2/2 bocca A



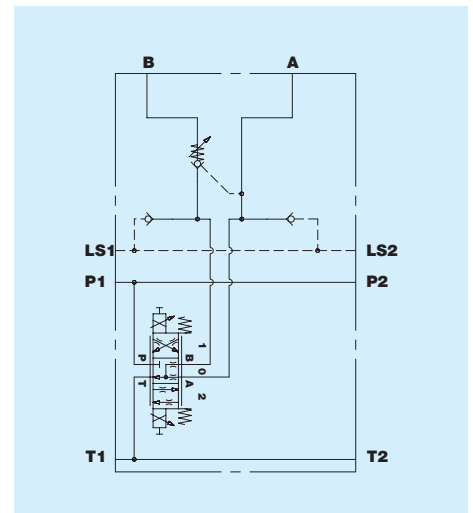
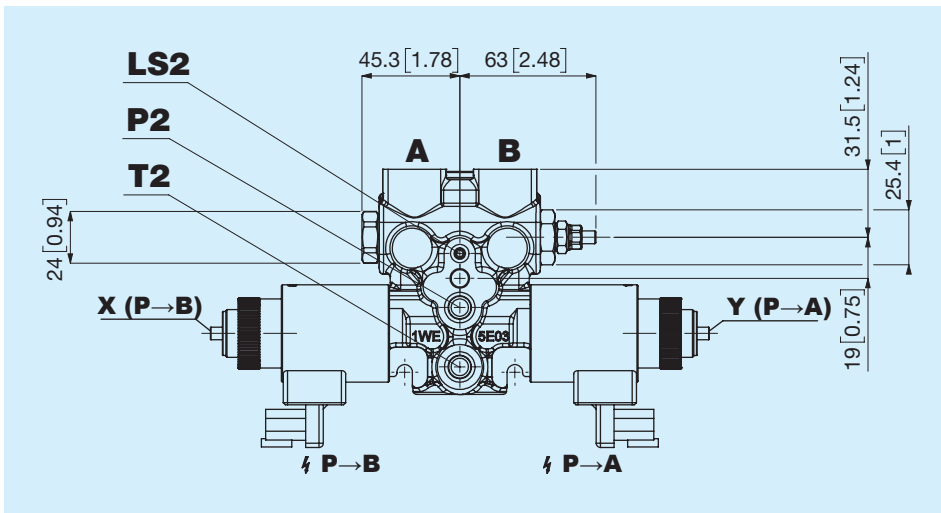
NE Elettrovalvola 2/2 bocca B



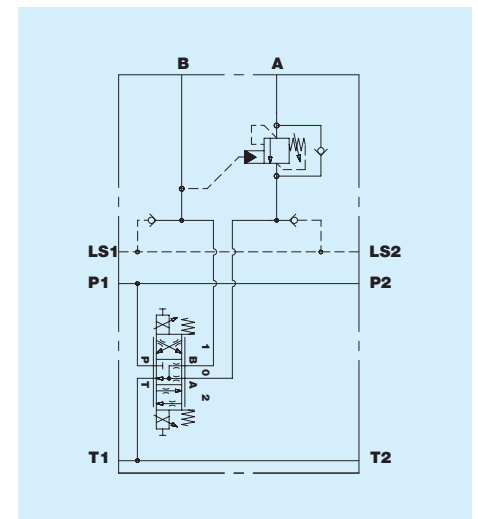
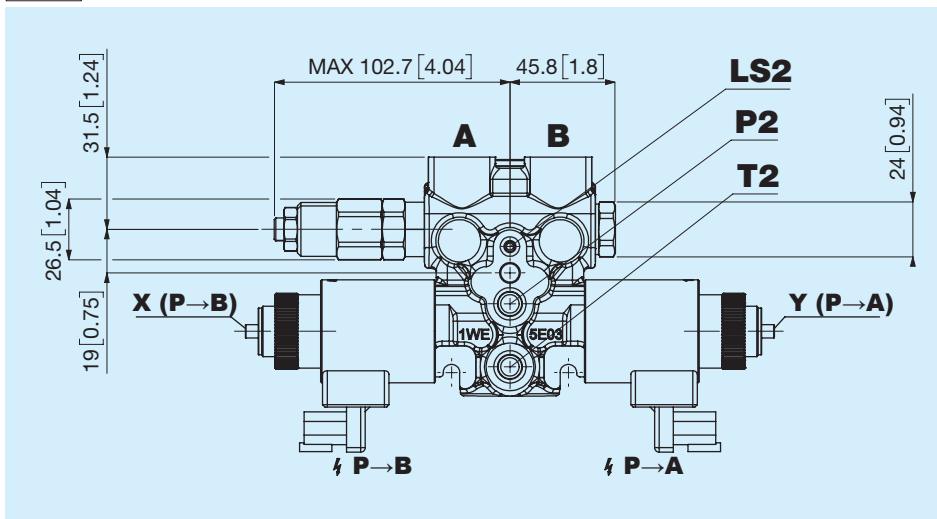
VG VB pilotata con strozzatore bidirezionale bocca A



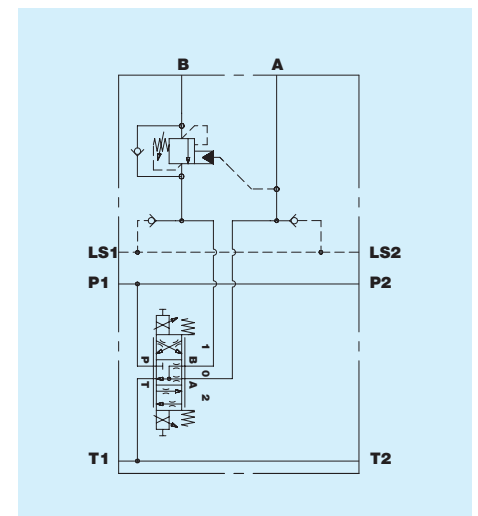
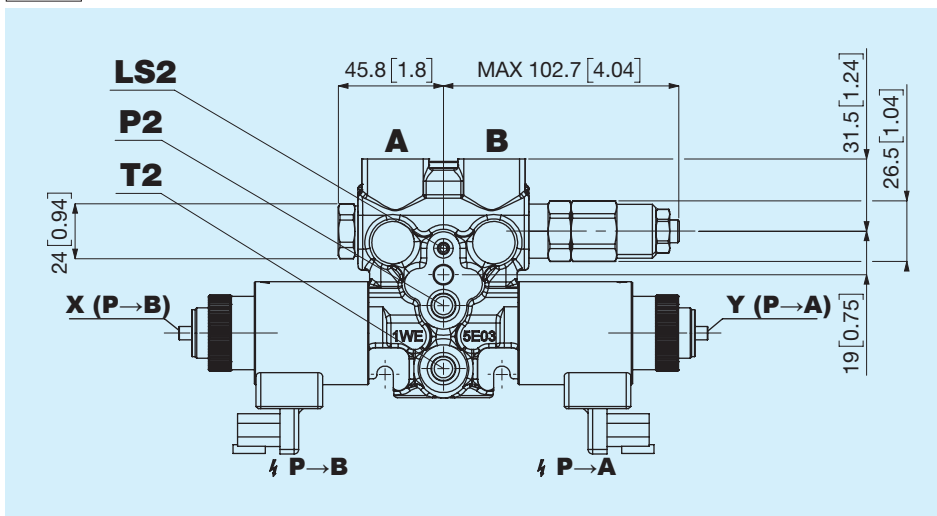
VG VB pilotata con strozzatore bidirezionale bocca B



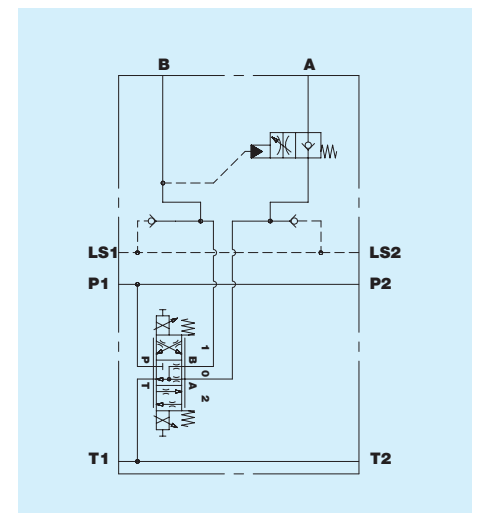
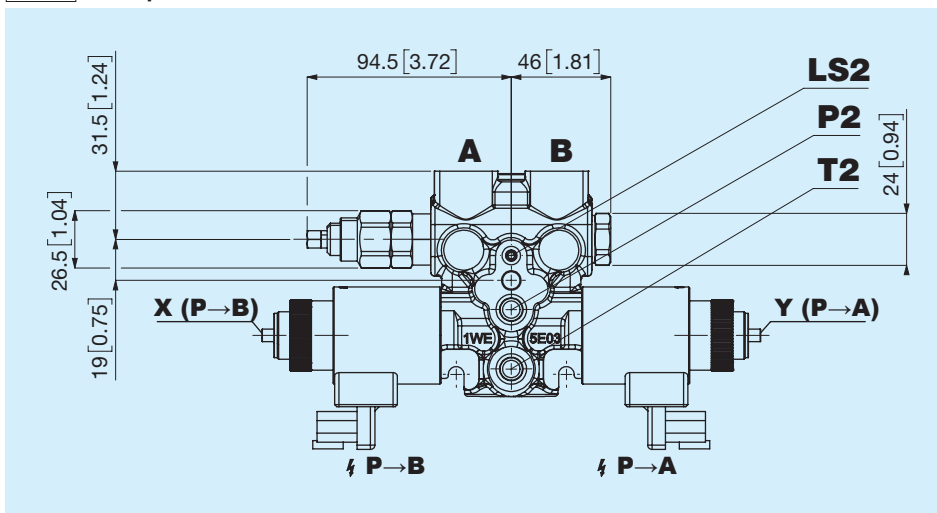
OV Over-center bocca A



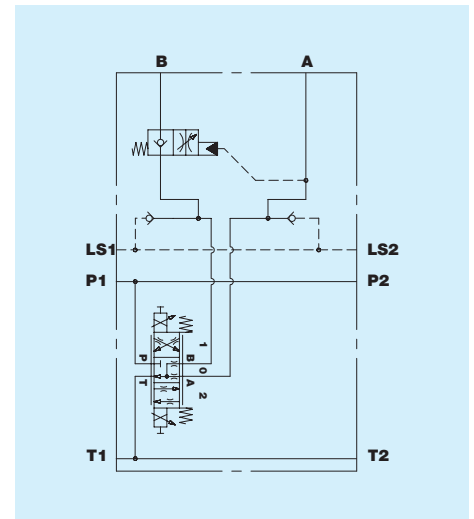
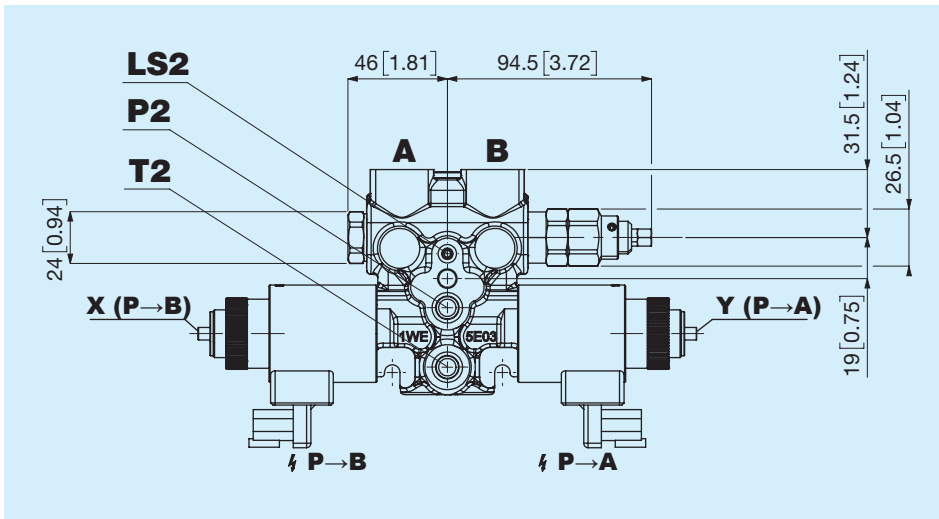
OV Over-center bocca B



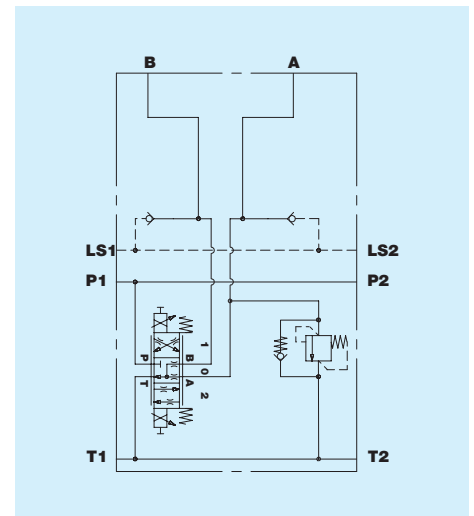
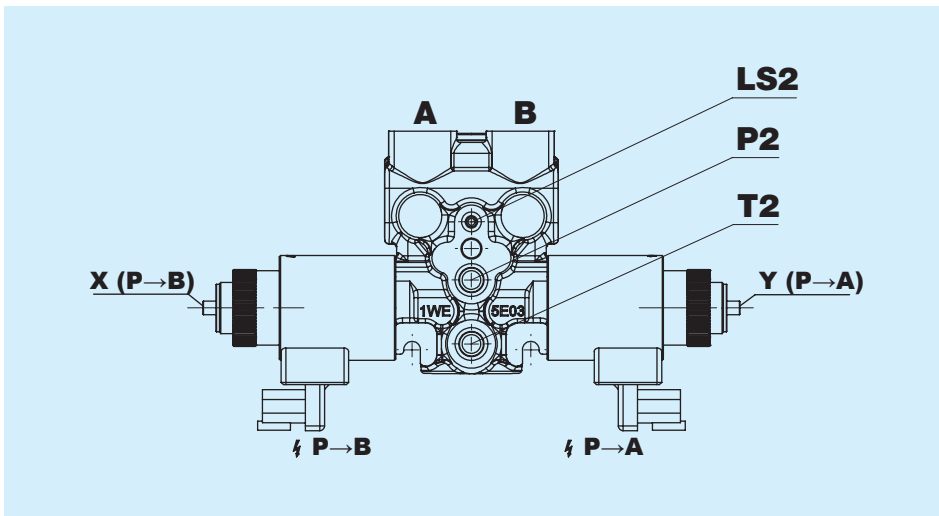
FP VB pilotata con strozzatore unidirezionale bocca A



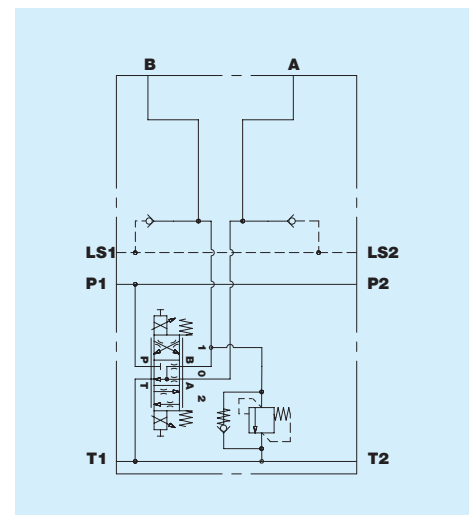
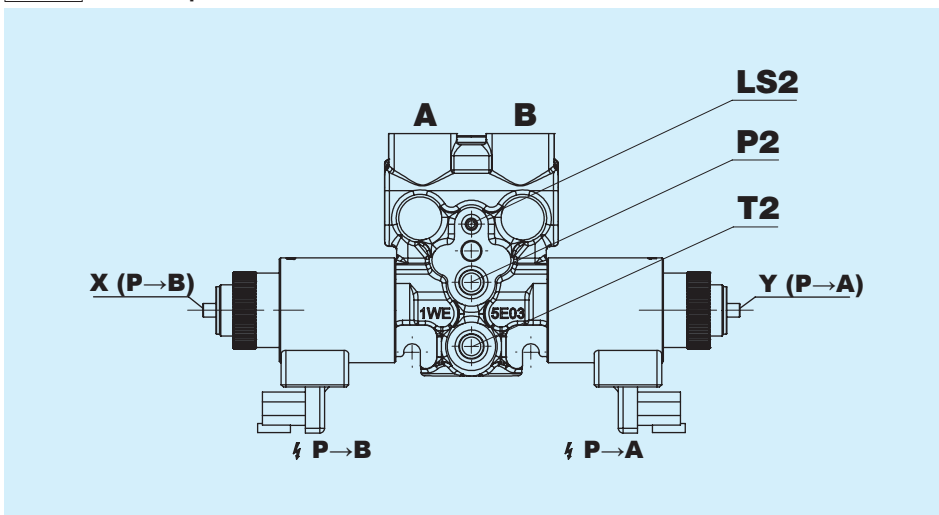
FP VB pilotata con strozzatore unidirezionale bocca B



RC VL di pressione ed anticavitazione interna bocca A



RC VL di pressione ed anticavitazione interna bocca B



Possibili combinazioni valvola bocca A e B

Bocca A	Bocca B							
	NN	VL	VB	NE	VG	OV	FP	RC
NN	•	•	•	•	•	•	•	•
VL	•	•	•	•	•	•	•	
VB	•	•	•		•			
NE	•	•		•				•
VG	•	•	•		•			
OV	•	•				•		
FP	•	•					•	
RC	•			•				•

NN - Nessuna

VL - Valvola limitatrice di pressione

VB - Valvola di blocco pilotata

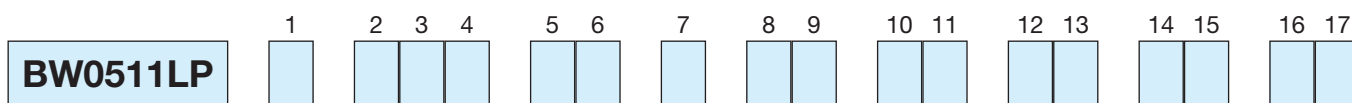
NE - Elettrovalvola 2/2

VG - Valvola di blocco pilotata con strozzatore bidirezionale

OV - Over-center

FP - Valvola di blocco pilotata con strozzatore unidirezionale

RC - Valvola limitatrice di pressione ed anticavitazione interna



1	Configurazioni	
<input type="checkbox"/>	A Due bobine lato bocca A e B E Una bobina lato bocca A	F Una bobina lato bocca B B Due bobine lato bocca A e B e leva di emergenza C Una bobina lato bocca A e leva di emergenza D Una bobina lato bocca B e leva di emergenza

2 3 4	Circuiti
<input type="checkbox"/> <input type="checkbox"/> <input type="checkbox"/>	003 Circuito

5 6	Portata $\Delta P = 18$ bar			
<input type="checkbox"/> <input type="checkbox"/>	0A 5,5 l/min - 1,45 US gpm 0B 11 l/min - 2,90 US gpm	0C 16 l/min - 4,22 US gpm 0D 21 l/min - 5,54 US gpm	0E 26 l/min - 6,87 US gpm 0F 31 l/min - 8,19 US gpm	0G 37 l/min - 9,77 US gpm

7	Filettatura bocche A e B			
<input type="checkbox"/>	A 3/8" GAS ISO 1179	C M18x1,5 ISO 9974	W M18x1,5 ISO 6149	E 3/4" 16 SAE ISO 11926

8 9	VL Valvola limitatrice di pressione sottobicata bocca A			
<input type="checkbox"/> <input type="checkbox"/>	NN Nessuna 04 VL 40 bar 05 VL 50 bar 06 VL 60 bar 07 VL 70 bar 08 VL 80 bar	09 VL 90 bar 10 VL 100 bar 11 VL 110 bar 12 VL 120 bar 13 VL 130 bar 14 VL 140 bar	15 VL 150 bar 16 VL 160 bar 17 VL 170 bar 18 VL 180 bar 19 VL 190 bar 20 VL 200 bar	21 VL 210 bar 22 VL 220 bar 23 VL 230 bar

10 11	VL Valvola limitatrice di pressione sottobicata bocca B			
<input type="checkbox"/> <input type="checkbox"/>	NN Nessuna 04 VL 40 bar 05 VL 50 bar 06 VL 60 bar 07 VL 70 bar 08 VL 80 bar	09 VL 90 bar 10 VL 100 bar 11 VL 110 bar 12 VL 120 bar 13 VL 130 bar 14 VL 140 bar	15 VL 150 bar 16 VL 160 bar 17 VL 170 bar 18 VL 180 bar 19 VL 190 bar 20 VL 200 bar	21 VL 210 bar 22 VL 220 bar 23 VL 230 bar

12 13	Tipo di valvola bocca A			
<input type="checkbox"/> <input type="checkbox"/>	NN Nessuna VB Valvola di blocco pilotata	NE Elettrovalvola 2/2 VG Valvola di blocco pilotata con stroz. bidirezionale	OV Over-center FP Valvola di blocco pilotata con stroz. unidirezionale	RC Valvola limitatrice di pressione ed anticavitazione interna

14 15	Pressione di taratura OV/RC bocca A			
<input type="checkbox"/> <input type="checkbox"/>	NN Nessuna 03 30 bar 04 40 bar 05 50 bar 06 60 bar 07 70 bar 08 80 bar	09 90 bar 10 100 bar 11 110 bar 12 120 bar 13 130 bar 14 140 bar 15 150 bar	16 160 bar 17 170 bar 18 180 bar 19 190 bar 20 200 bar 21 210 bar 22 220 bar	23 230 bar 24 240 bar 25 250 bar 26 260 bar 27 270 bar

16 17	Tipo di valvola bocca B			
<input type="checkbox"/> <input type="checkbox"/>	NN Nessuna VB Valvola di blocco pilotata	NE Elettrovalvola 2/2 VG Valvola di blocco pilotata con stroz. bidirezionale	OV Over-center FP Valvola di blocco pilotata con stroz. unidirezionale	RC Valvola limitatrice di pressione ed anticavitazione interna

18 19 20 21

<input type="checkbox"/>	<input type="checkbox"/>	<input type="checkbox"/>	<input type="checkbox"/>
--------------------------	--------------------------	--------------------------	--------------------------

18 19

<input type="checkbox"/>	<input type="checkbox"/>
--------------------------	--------------------------

Pressione di taratura OV/RC bocca B

NN Nessuna	09 90 bar	16 160 bar	23 230 bar
03 30 bar	10 100 bar	17 170 bar	24 240 bar
04 40 bar	11 110 bar	18 180 bar	25 250 bar
05 50 bar	12 120 bar	19 190 bar	26 260 bar
06 60 bar	13 130 bar	20 200 bar	27 270 bar
07 70 bar	14 140 bar	21 210 bar	
08 80 bar	15 150 bar	22 220 bar	

20

<input type="checkbox"/>

Tensione e connettore

A 12V DIN 43650	B 24V DIN 43650	G 12V Deutsch	H 24V Deutsch
------------------------	------------------------	----------------------	----------------------

21

<input type="checkbox"/>

Trattamento esterno

A Trattamento esterno	N Nessuno
------------------------------	------------------