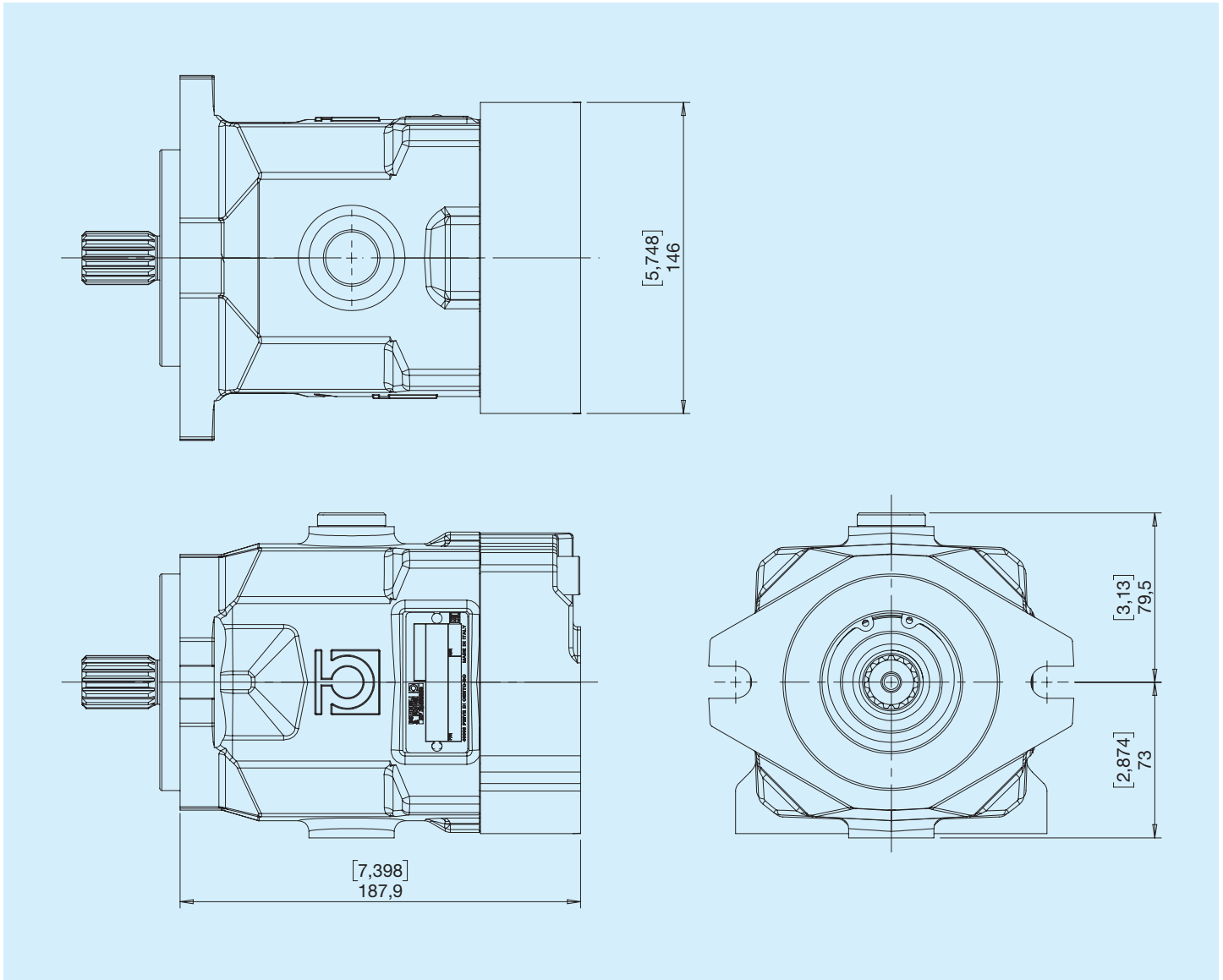


## Konstantmotoren M4MF34-46-50-58-65

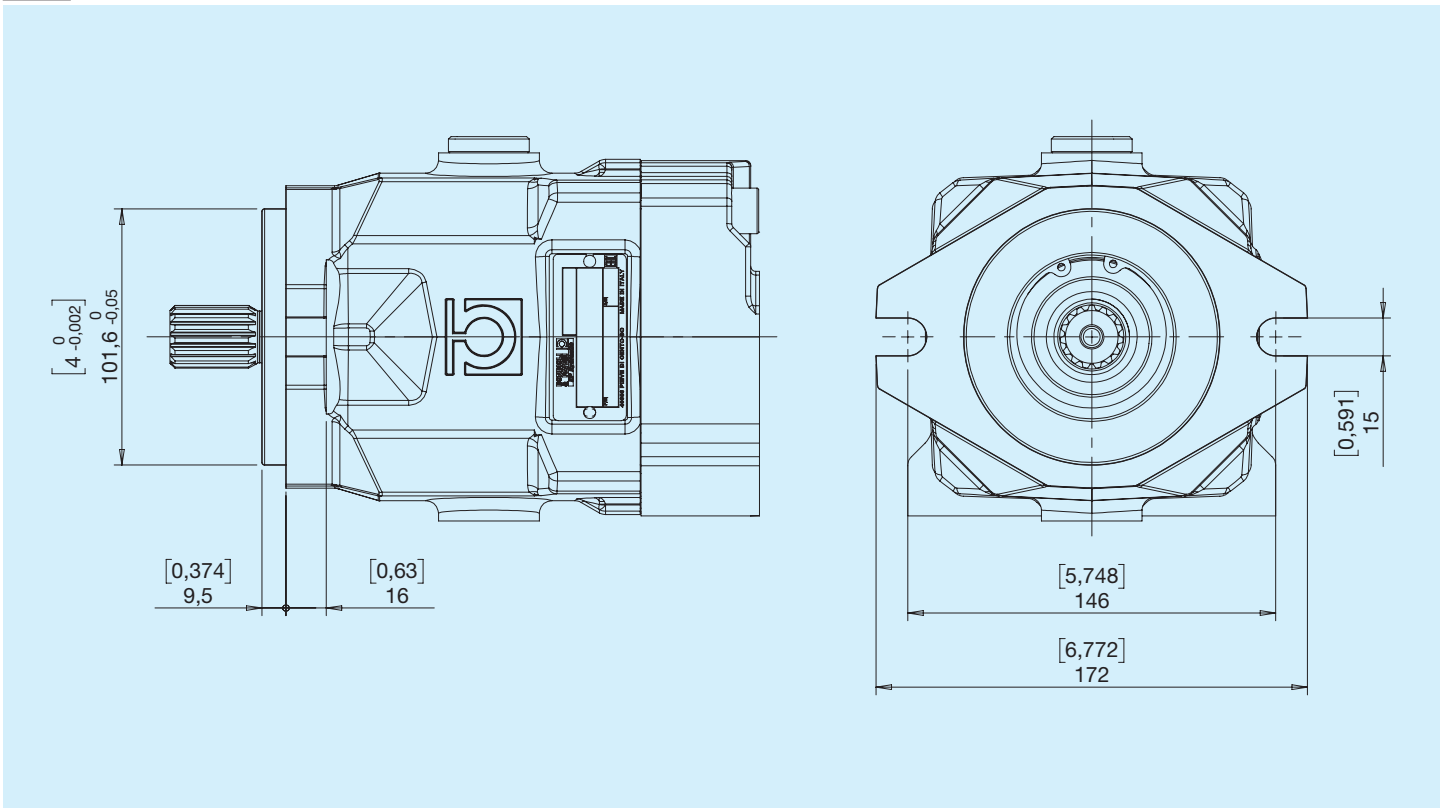


Bevor Sie mit der Benutzung beginnen, lesen Sie bitte das Dokument ALLGEMEINE GEBRAUCHSANWEISUNGEN FÜR AXIALKOLBENPUMPEN UND -MOTOREN FÜR GESCHLOSSENEN KREISLAUF sorgfältig durch.

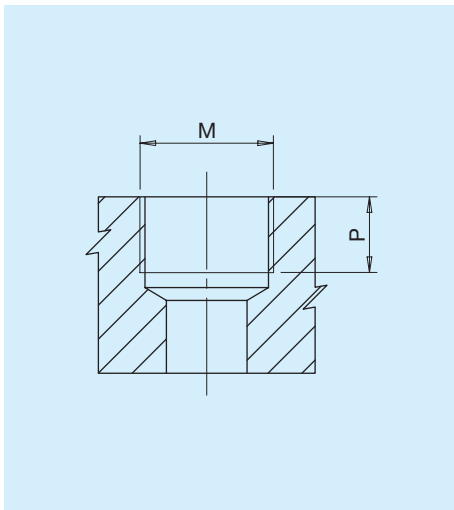


M4MF	Fördervolumen		Oszillierend °	Druck						Drehzahl		Gewicht	
	cm <sup>3</sup>	in <sup>3</sup>		dauerhaft		aussetzend		Spitze		MAX	MIN	kg	lbs
				bar	psi	bar	psi	bar	psi	min <sup>-1</sup>	min <sup>-1</sup>		
<b>34</b>	34	2,06	18	250	3625	330	4785	400	5800	3600	500	13	28,6
<b>46</b>	46	2,81	19	250	3625	330	4785	400	5800	3600	500	13	28,6
<b>50</b>	50	3,05	18	250	3625	330	4785	400	5800	3600	500	14	30,8
<b>58</b>	58	3,54	18	250	3625	330	4785	400	5800	3600	500	14	30,8
<b>65</b>	65	3,97	18	250	3625	300	4350	350	5075	3600	500	14	30,8

**B** SAE B

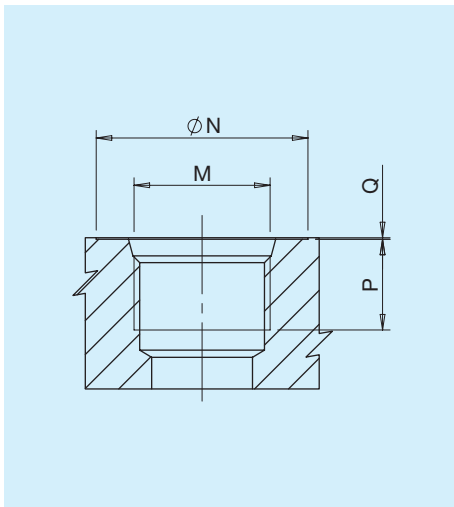


## Typ G



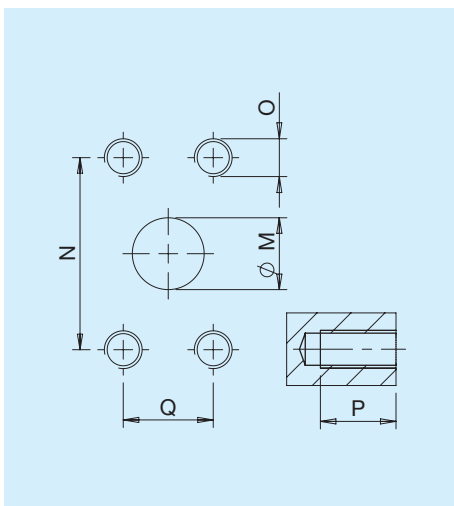
Typ	M		P	
		Nm	mm	in
G6	ANSCHLUSS ISO 1179-1 - G 3/4	90	20	0,79
G6	Port ISO 1179-1 - G 3/4	90	20	0,79

## Typ U



Typ	Maße	N		P		Q		M	
		mm	in	mm	in	mm	in		Nm
U6	3/4"	42	1,65	20	0,79	0,3	0,01	ANSCHLUSS ISO 11926-1-1 1/16-12	90
U6	3/4"	42	1,65	20	0,79	0,3	0,01	Port ISO 11926-1-1 1/16-12	90

## Typ N

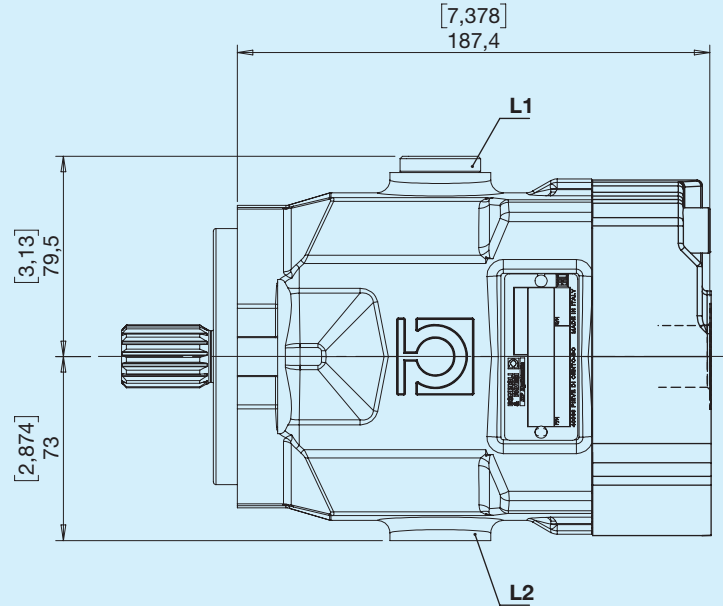
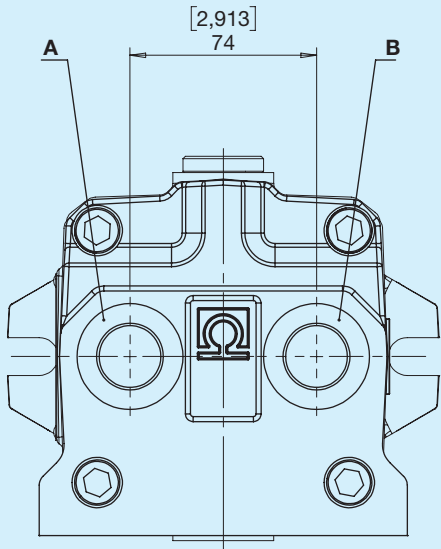


Typ	M		N		Q		P		O
	mm	in	mm	in	mm	in	mm	in	Nm
N6	19	0,75	50,8	2	23,8	0,94	20	0,79	M10 38

## Kombinationen

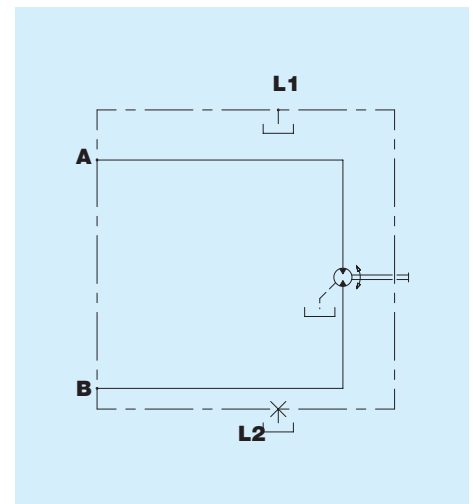
Typ	Ingresso/Uscita <b>A-B</b>	Leckölanschluss <b>L1-L2</b>	Pilotaggio <b>X</b>
<b>R</b>	G6	G6	G1
<b>U</b>	U6	U6	U2
<b>N</b>	N6	G6	G1
<b>M</b>	N6	U6	U2

## 1 Hinten



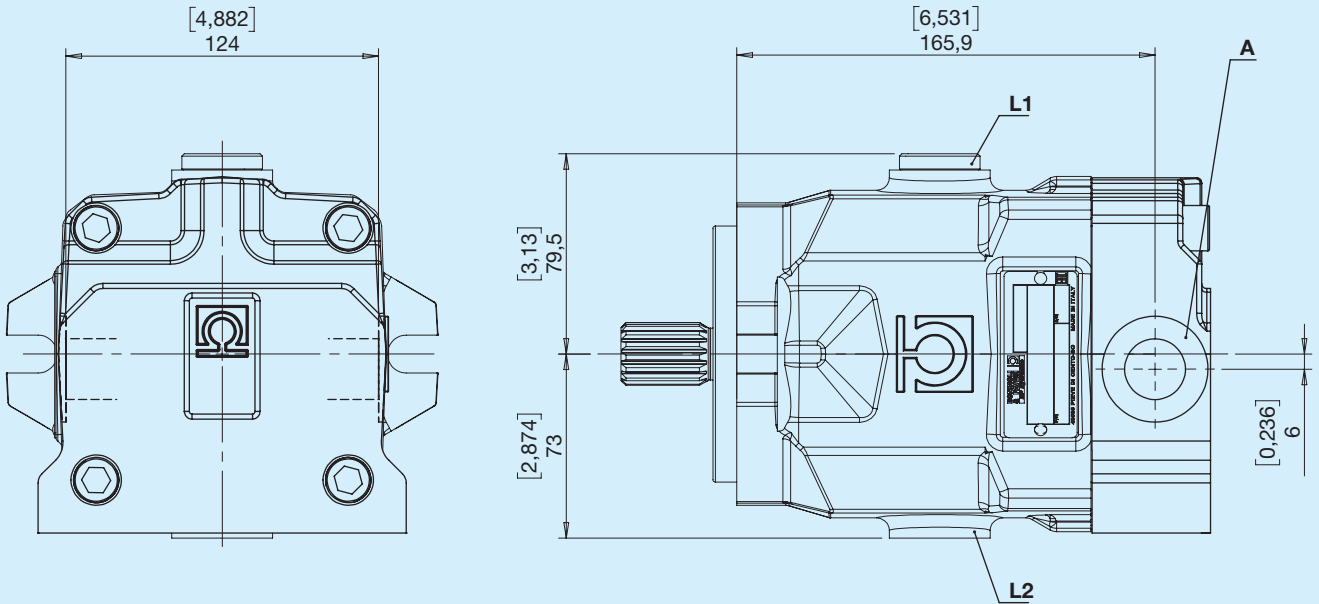
Nicht verfügbar in Version N6

## Hydraulikplan



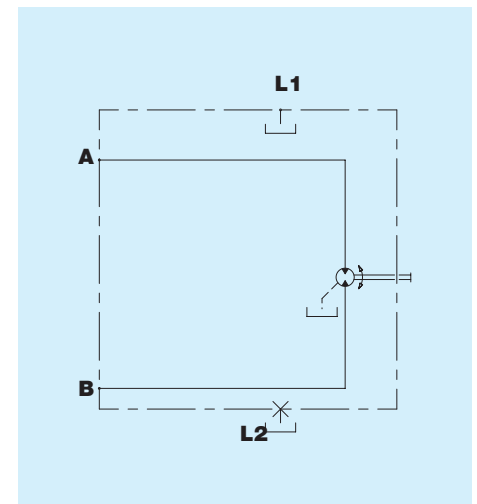
A,B - Use  
L1, L2 - Drain port

**L** Beidseitig



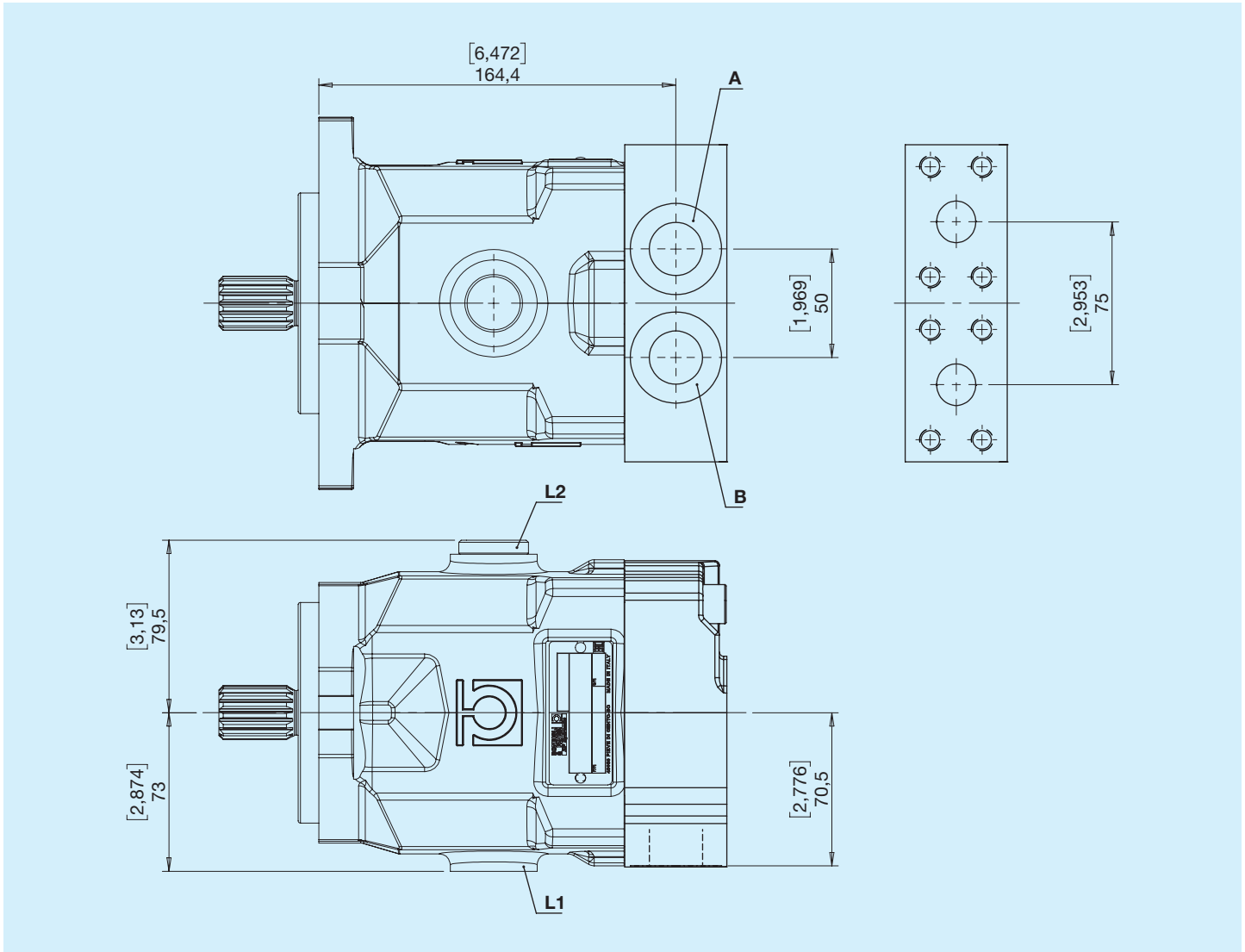
Nicht verfügbar in Version N6

## Hydraulikplan



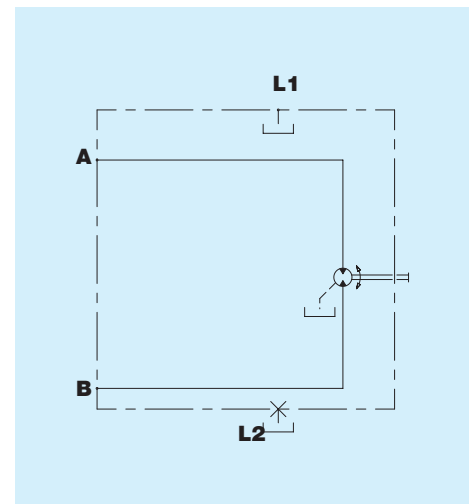
A,B - Use  
L1, L2 - Drain port

## A Seitlich gekoppelt



A,B - Use  
L1, L2 - Drain port

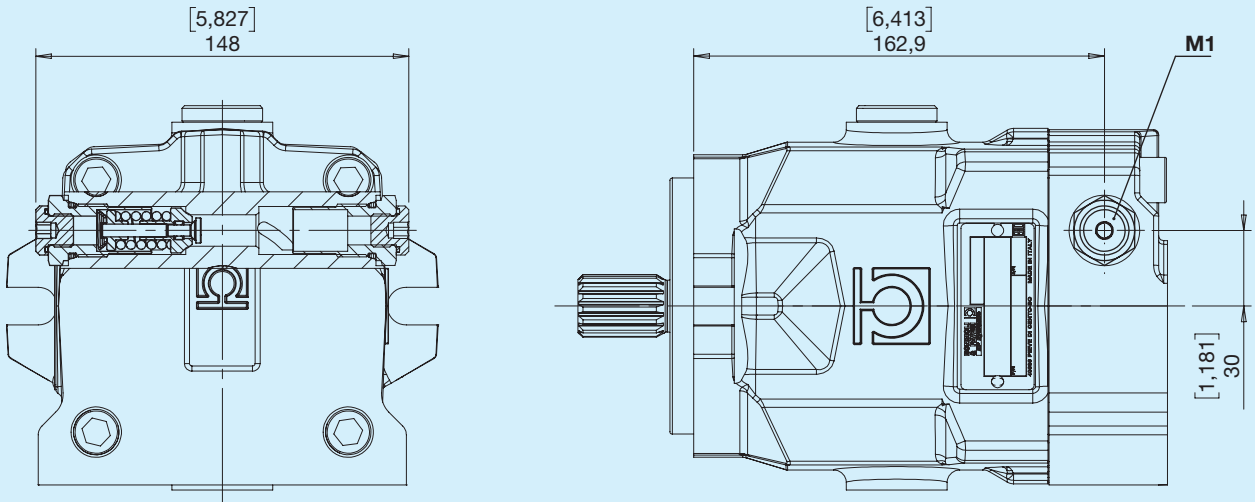
## Hydraulikplan





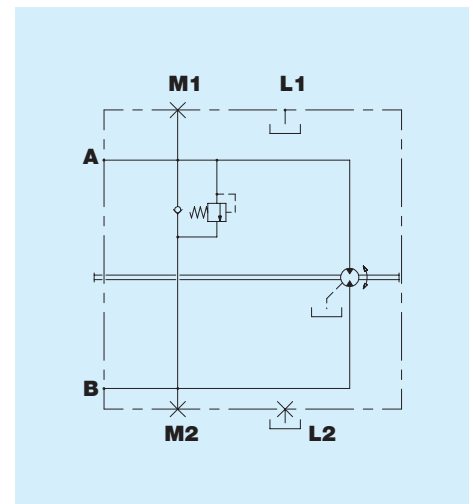


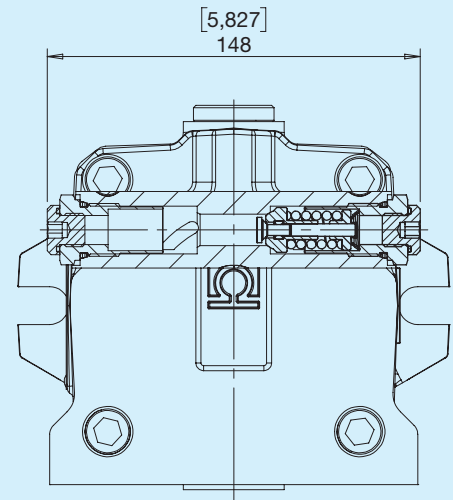
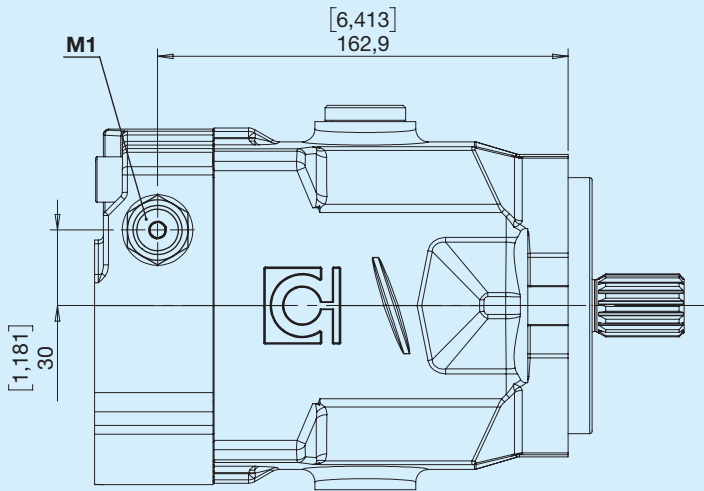
## A Nachsaugventil



Druckventil am Zweig A

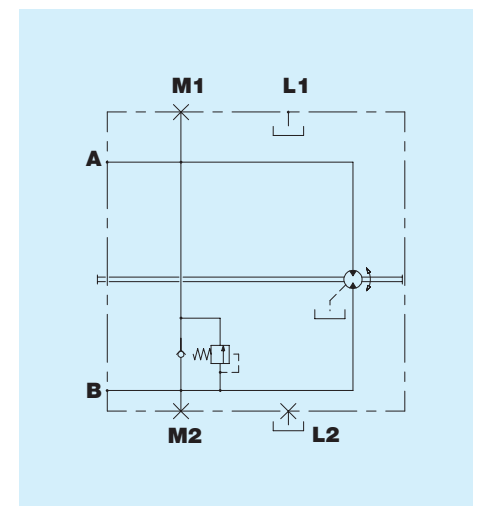
## Hydraulikplan



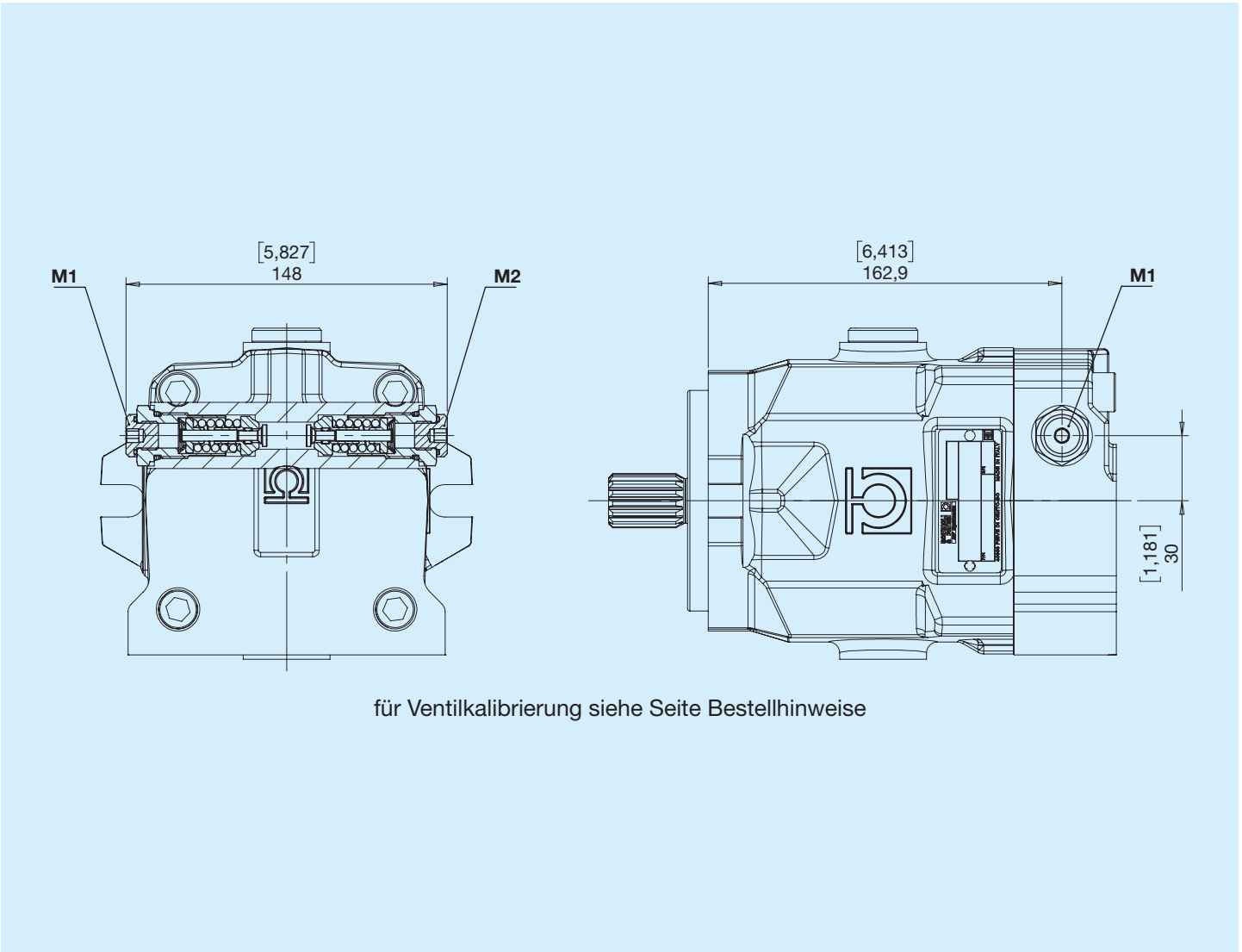


Druckventil am Zweig B

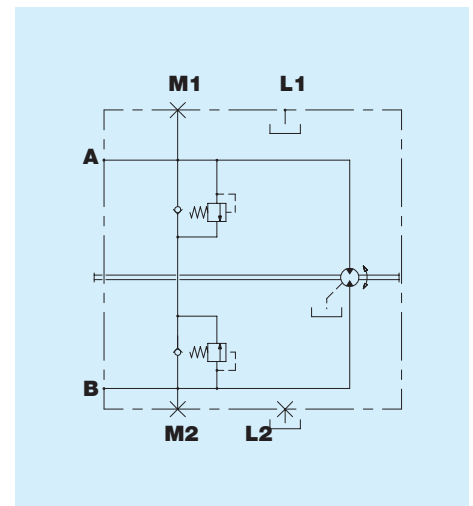
Hydraulikplan



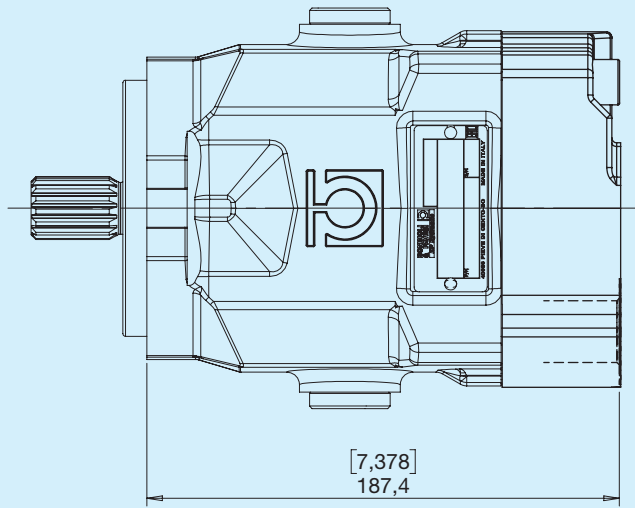
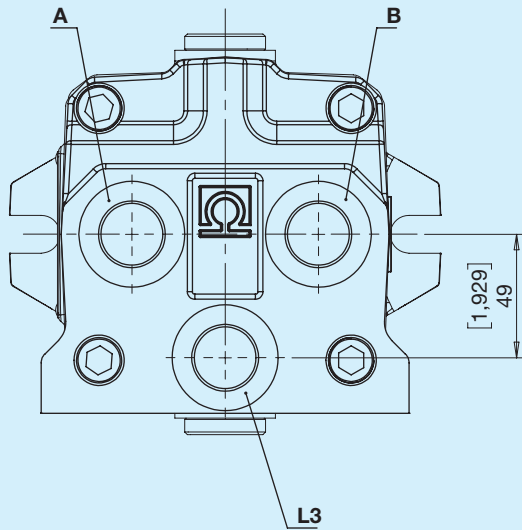
## M Druckbegrenzungsventil



### Hydraulikplan

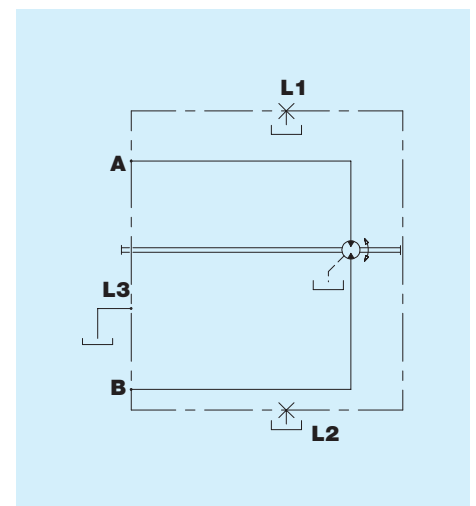


**P** Leckölanschluss hinten

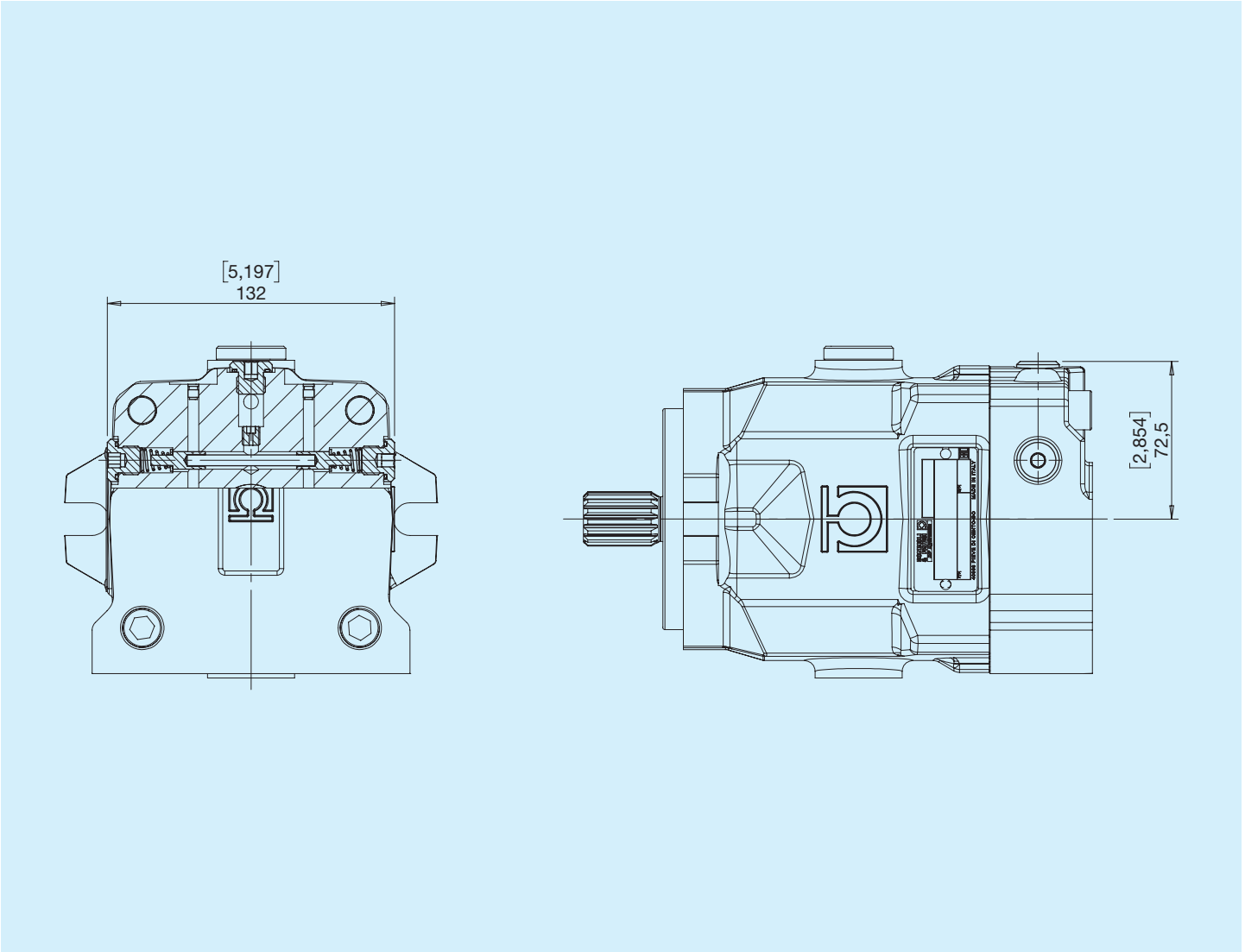


L3 - Leckölanschluss

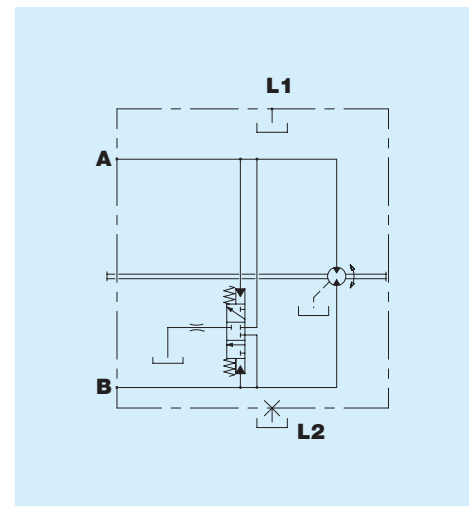
## Hydraulikplan



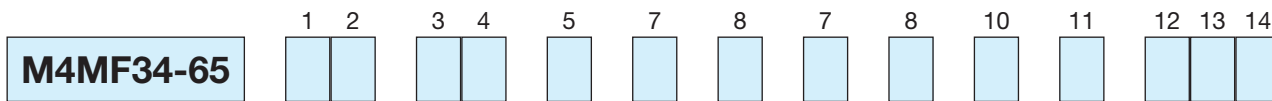
## V Spülventil (5-7 l/min)



### Hydraulikplan







1 2	Nenn-Verdrängungsvolumen	
<input type="checkbox"/>	<input checked="" type="checkbox"/>	<input type="checkbox"/>
	34 46	50 58
		65
3 4	Hubraum	
<input type="checkbox"/>	<input type="checkbox"/>	...
5	Flansche	
<input type="checkbox"/>	<b>B</b> SAE B	
7	Anschlusstyp	
<input type="checkbox"/>	<b>R</b> Gas	<b>U</b> Unf
		<b>N</b> Gas- <small>SAE-Anwendungen</small> Nur für <small>ALA-Anwendungen</small>
		<b>M</b> Unf- <small>SAE-Anwendungen</small> Nur für <small>ALA-Anwendungen</small>
8	Position der Anschlüsse	
<input type="checkbox"/>	<b>1</b> Hinten	<b>L</b> Beidseitig
		<b>A</b> Seitlich gekoppelt
7	Drehrichtung	
<input type="checkbox"/>	<b>B</b> Bidirektional	
8	Wellenenden	
<input type="checkbox"/>	<b>1</b> Zylindrisch Ø22,22	<b>3</b> SAE 15T 16/32 DP
	<b>2</b> Zylindrisch Ø25,4	<b>4</b> Zylindrisch Ø30
		<b>6</b> SAE 13T 16/32 DP
10	Zubehör	
<input type="checkbox"/>	<b>0</b> Keine Option	<b>C</b> Lackierung
	<b>A</b> Nachsaugventil	<b>M</b> Druckentlastungs- und Nachsaugventil
		<b>P</b> Leckölanschluss hinten
		<b>S</b> Mehrfach-Zubehör
		<b>V</b> Spülventil
11	Ventilkalibrierung	
<input type="checkbox"/>	<b>0</b> ohne Ventil	<b>E</b> 210 bar
	<b>B</b> 150 bar	<b>G</b> 250 bar
	<b>D</b> 180 bar	<b>I</b> 280 bar
		<b>L</b> 300 bar
		<b>O</b> 350 bar
		<b>P</b> 400 bar
		<b>Q</b> 420 bar
		<b>R</b> 450 bar
12 13 14	Sonderausführungen	
<input type="checkbox"/>	<input type="checkbox"/>	...