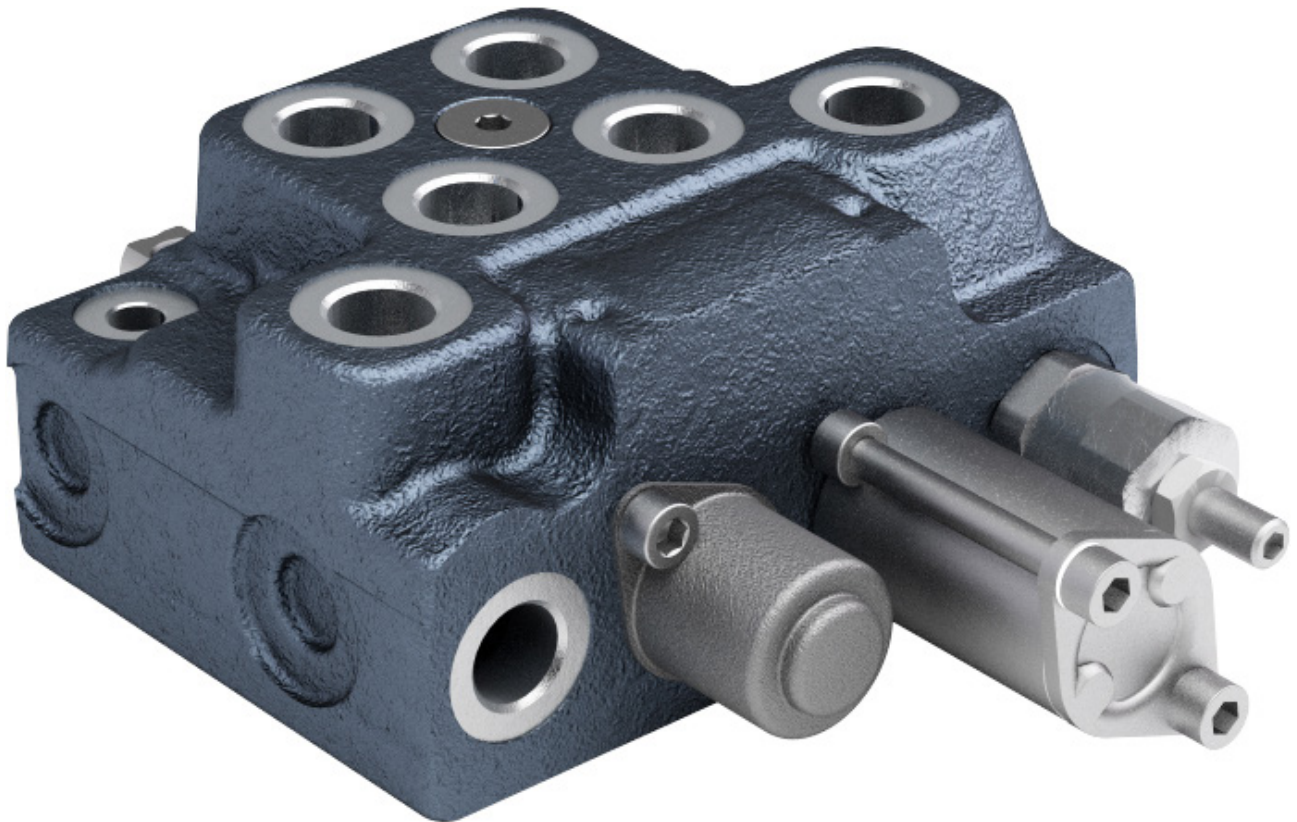
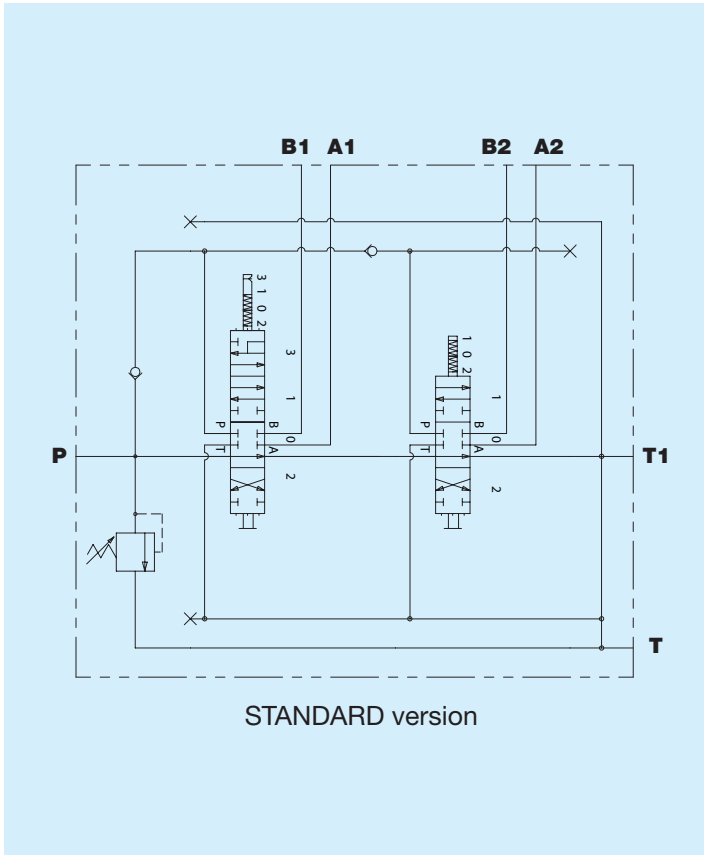


DN46CV - Directional control valve

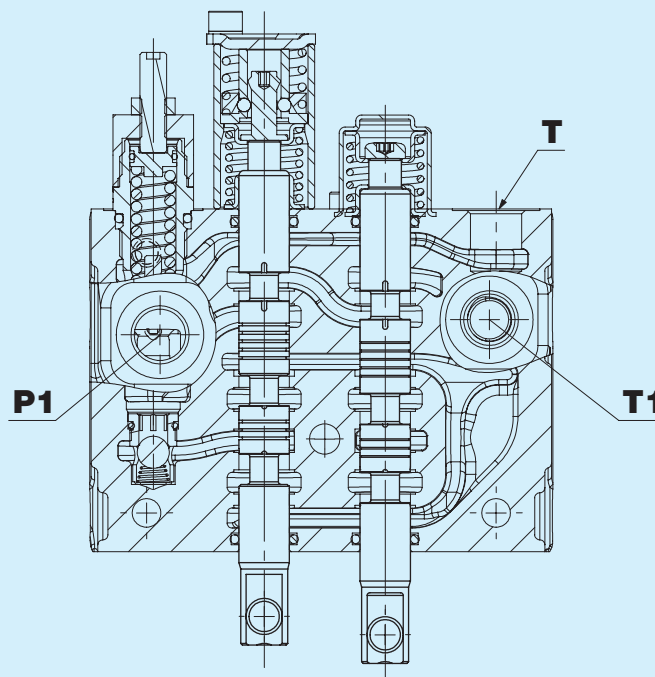


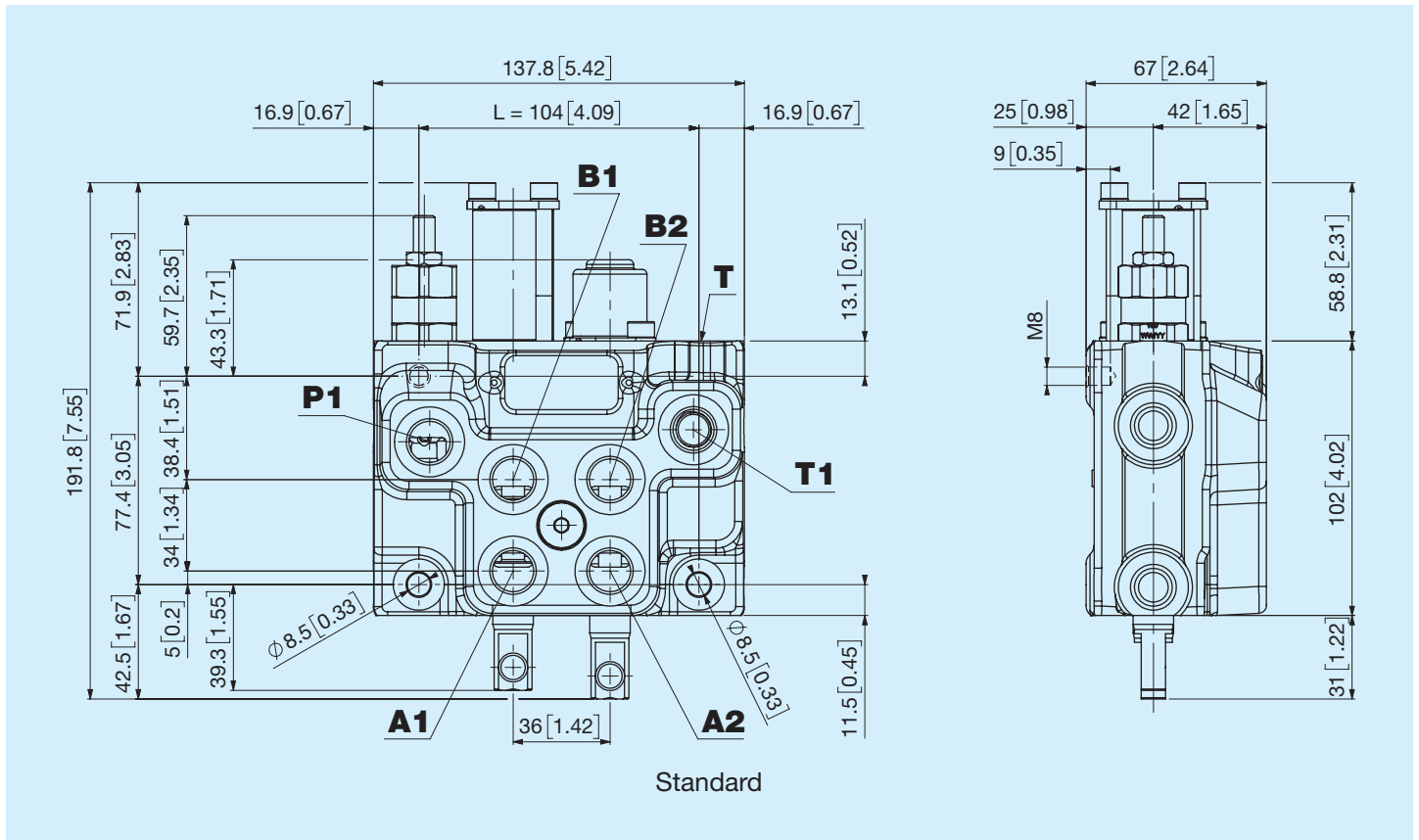
Before use, carefully read the GENERAL INSTRUCTIONS FOR USE OF DIRECTIONAL CONTROL VALVES

Nominal flow	45 l/min 11.9 US gpm
Nominal pressure	250 bar 3625 psi
Maximum tank pressure	50 bar 725 psi
Maximum internal leakage (A or B -> P and T) p=100 bar (1450 psi)	8 cm³/min 0.49 in³/min
Temperature range	-20°C +85°C NBR seals (max peak +100°C) -20°C + 130°C HNBR seals
Oil viscosity	from 15 mm²/s to 90 mm²/s (15 cSt to 90 cSt)
Fluid	Hydraulic fluids as defined in ISO 6743-4 standard



Section

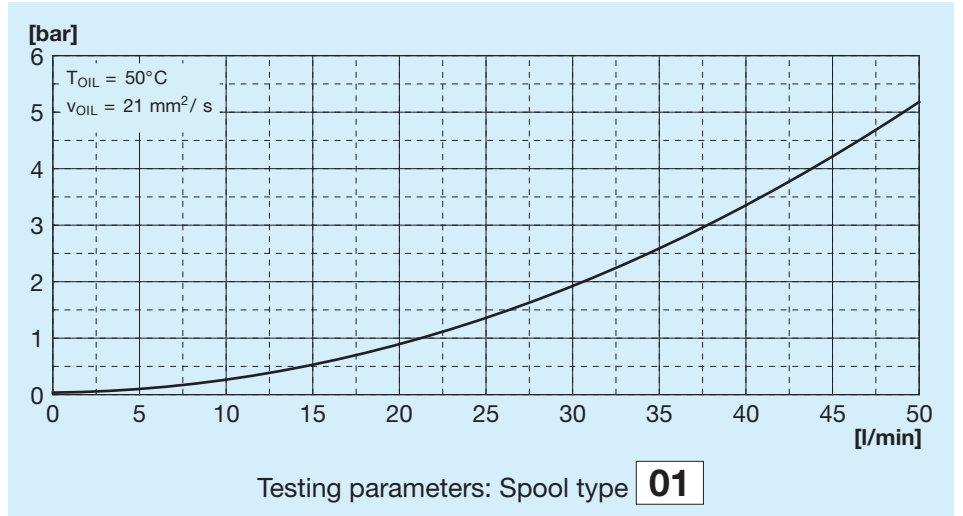
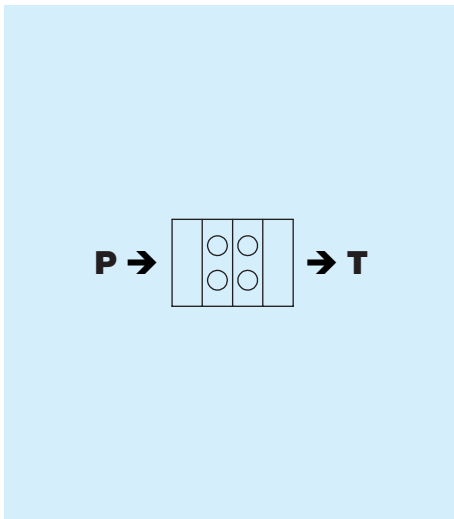




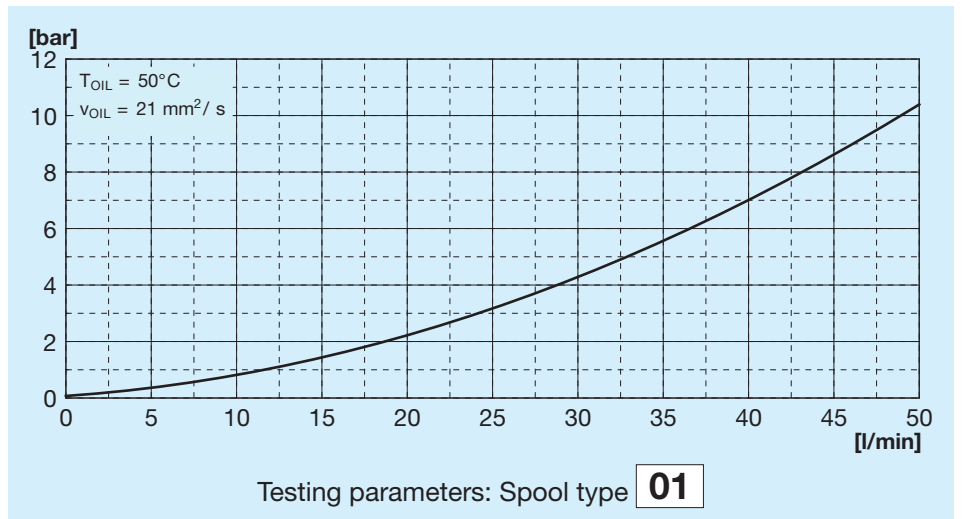
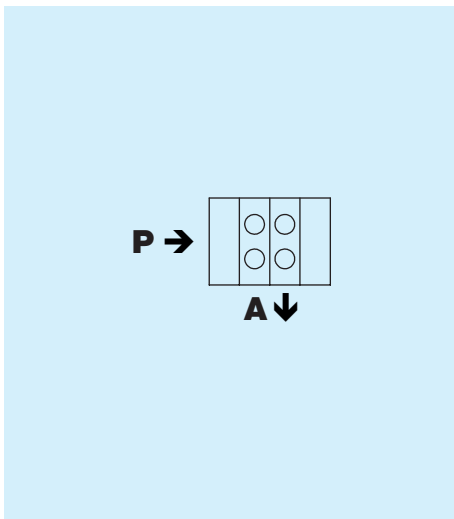
Dimensions per number of sections

Code	N° of sections	L		Weight	
		mm	in	kg	lb
2	2	104	4,1	6,2	13,64

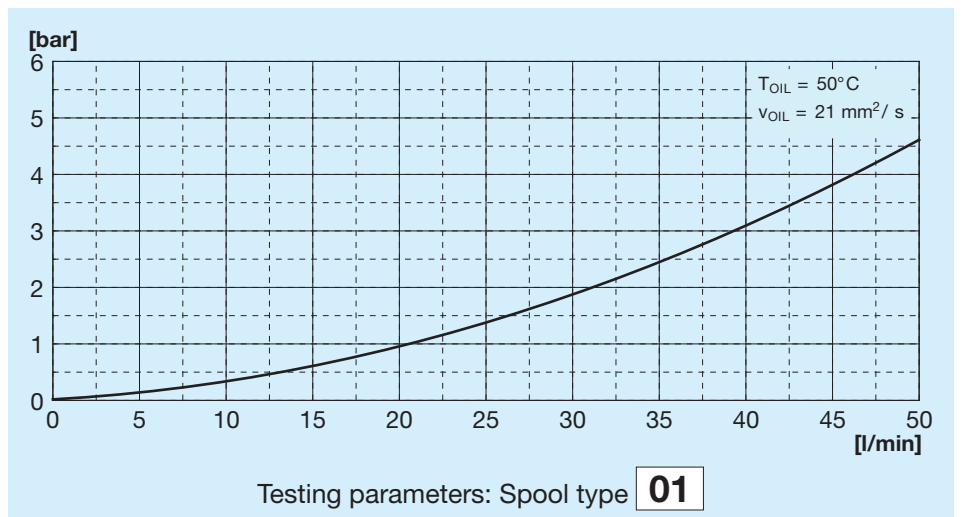
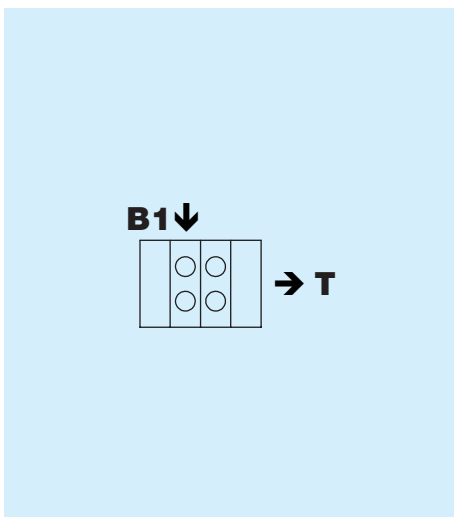
Flow curve P-T



Flow curve P-A



Flow curve B1-T



Thread port P1

Code	Type	Torque Nm
A	3/8" GAS ISO 1179	35
B	1/2" GAS ISO 1179	70
C	M18x1.5 ISO 9974	40
W	M18x1.5 ISO 6149	42
E	3/4" - 16 SAE ISO 11926	42

Thread ports A - B

Code	Type	Torque Nm
A	3/8" GAS ISO 1179	35
C	M18x1.5 ISO 9974	40
W	M18x1.5 ISO 6149	42
P	9/16" - 18 SAE ISO 11926	28
E	3/4" - 16 SAE ISO 11926	42

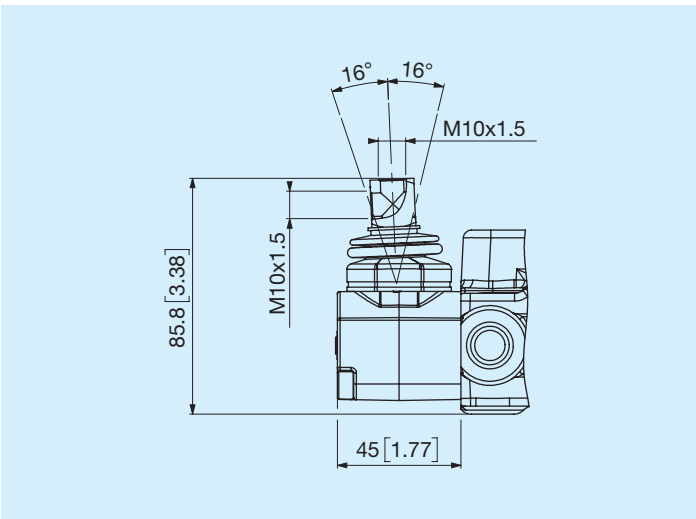
Thread ports T

Code	Type	Torque Nm
A	3/8" GAS ISO 1179	35
C	M18x1.5 ISO 9974	40
W	M18x1.5 ISO 6149	42
P	9/16" - 18 SAE ISO 11926	28
E	3/4" - 16 SAE ISO 11926	42

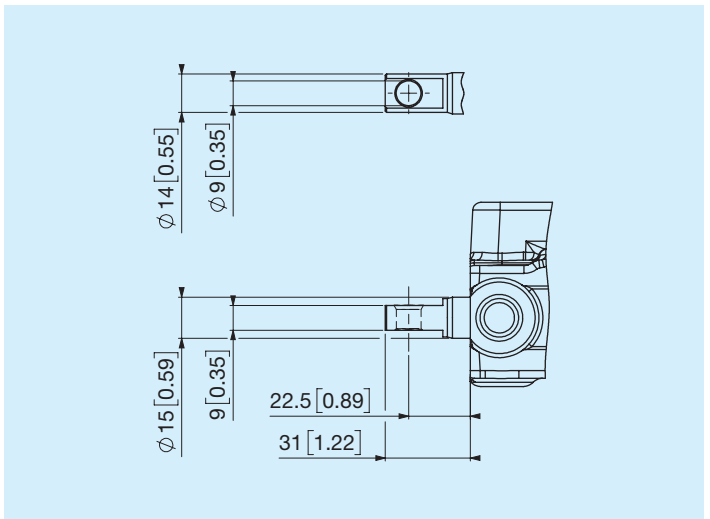
Thread ports T1

Code	Type	Torque Nm
A	3/8" GAS ISO 1179	35
C	M18x1.5 ISO 9974	40
W	M18x1.5 ISO 6149	42
E	3/4" - 16 SAE ISO 11926	42

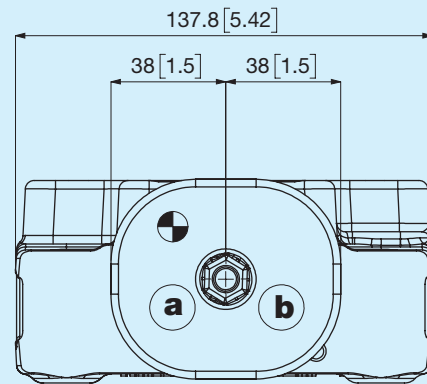
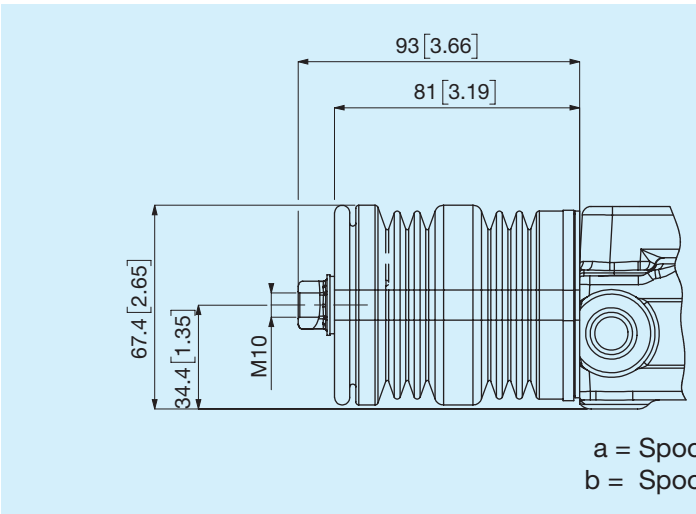
L Standard kit for lever holder



C Without lever holder, flat appendix

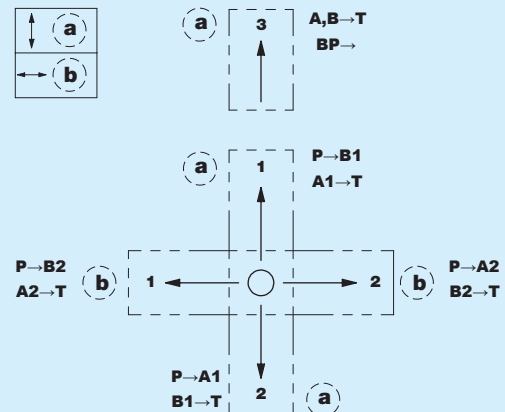
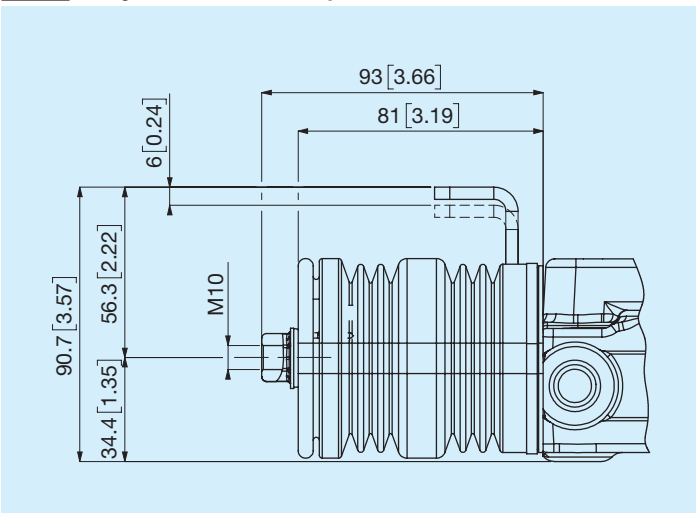


M Joystick



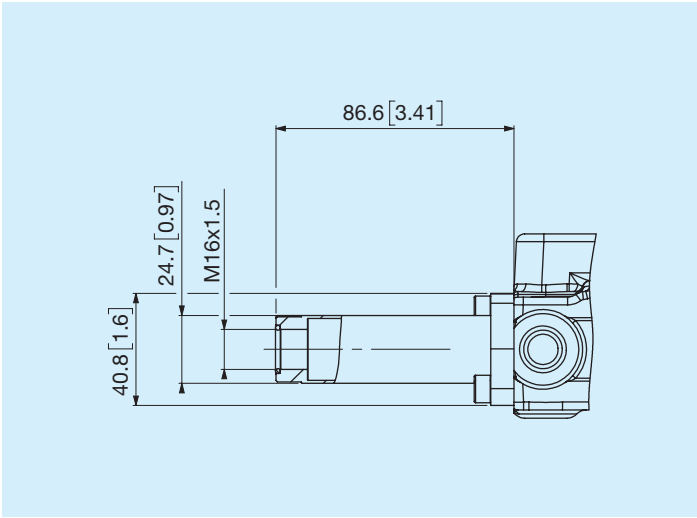
a = Spool 1st section
b = Spool 2nd section

G Joystick with spool lock

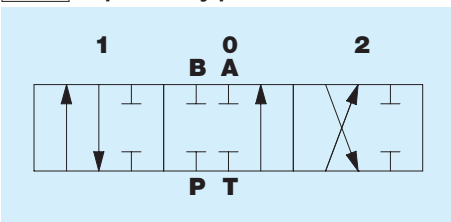


Also available in other configurations.

T Cable setting



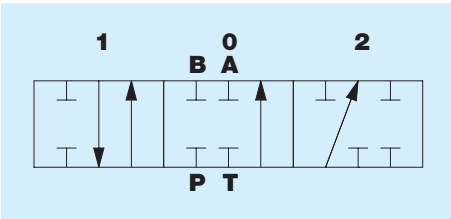
01 Spool type



Positions

3	1	0	2	4
	P → B A → T BP —	P, T — A, B — BP →	P → A B → T BP —	

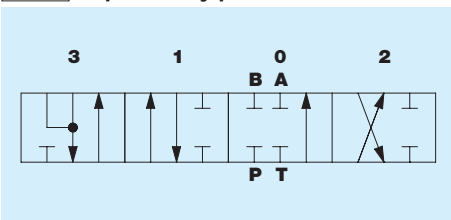
04 Spool type



Positions

3	1	0	2	4
	A → T P, B — BP →	P, T — A, B — BP →	P → A B, T — BP —	

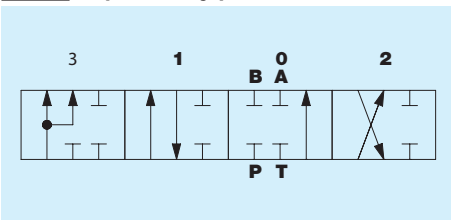
07 Spool type



Positions

3	1	0	2	4
A, B → T P — BP →	P → B A → T BP —	P, T — A, B — BP →	P → A B → T BP —	

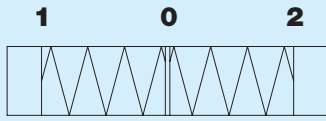
17 Spool type



Positions

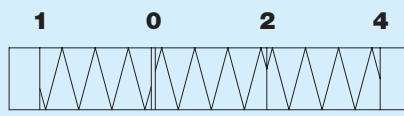
3	1	0	2	4
P → A, B T — BP —	P → B A → T BP —	P, T — A, B — BP →	P → A B → T BP —	

0A



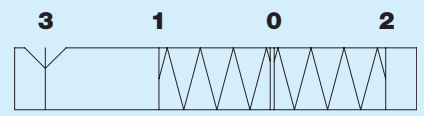
Neutral position in 0

0T



Neutral position in 0

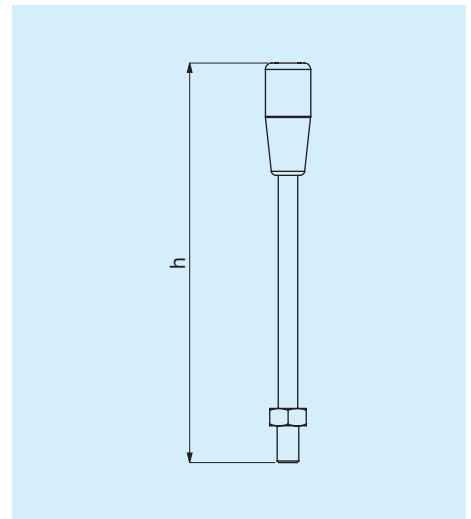
NS



Neutral position in 0, detent in 3

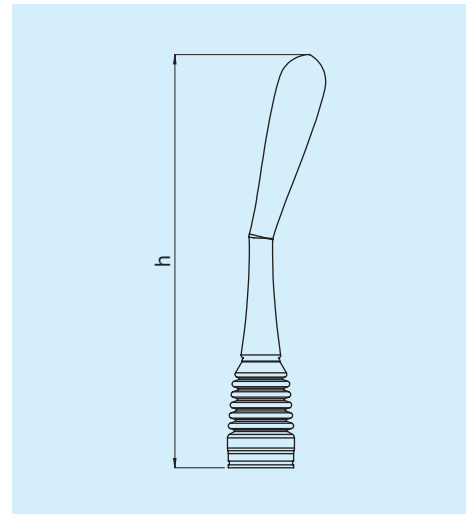
Straight standard knob

Code	Description	h [mm]	h [in]
A	Straight standard knob	109	4,3
B	Straight standard knob	134	5.28
C	Straight standard knob	184	7,24
D	Straight standard knob	214	8,42
E	Straight standard knob	254	10
F	Straight standard knob	304	11,97

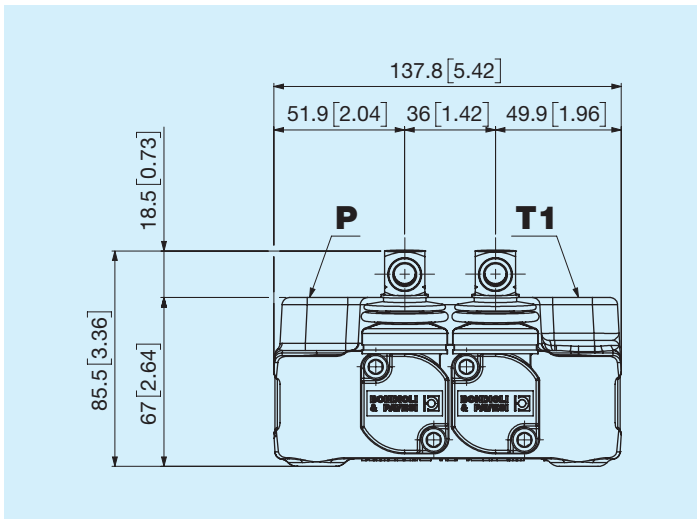


Ergonomic lever

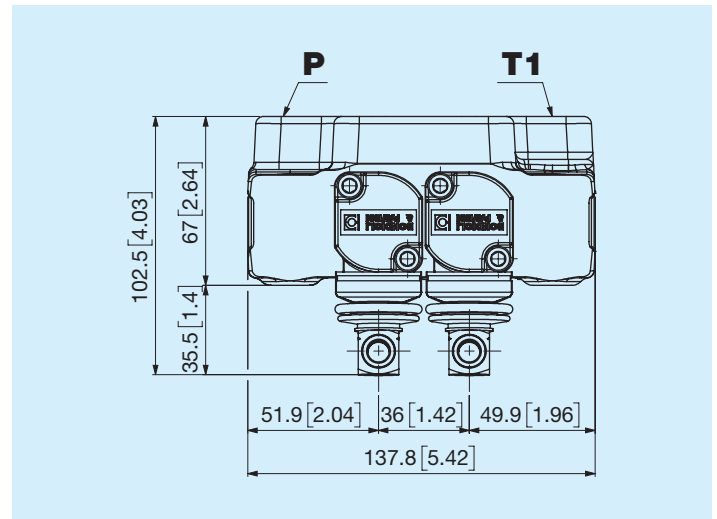
Code	Description	h [mm]	h [in]
L	Straight vertical	180	7.09
O	Bent 15° vertical	180	7.09
R	Bent 30° vertical	180	7.09
M	Straight horizontal	180	7.09
Y	Bent 15° horizontal	180	7.09
Q	Bent 30° horizontal	180	7.09



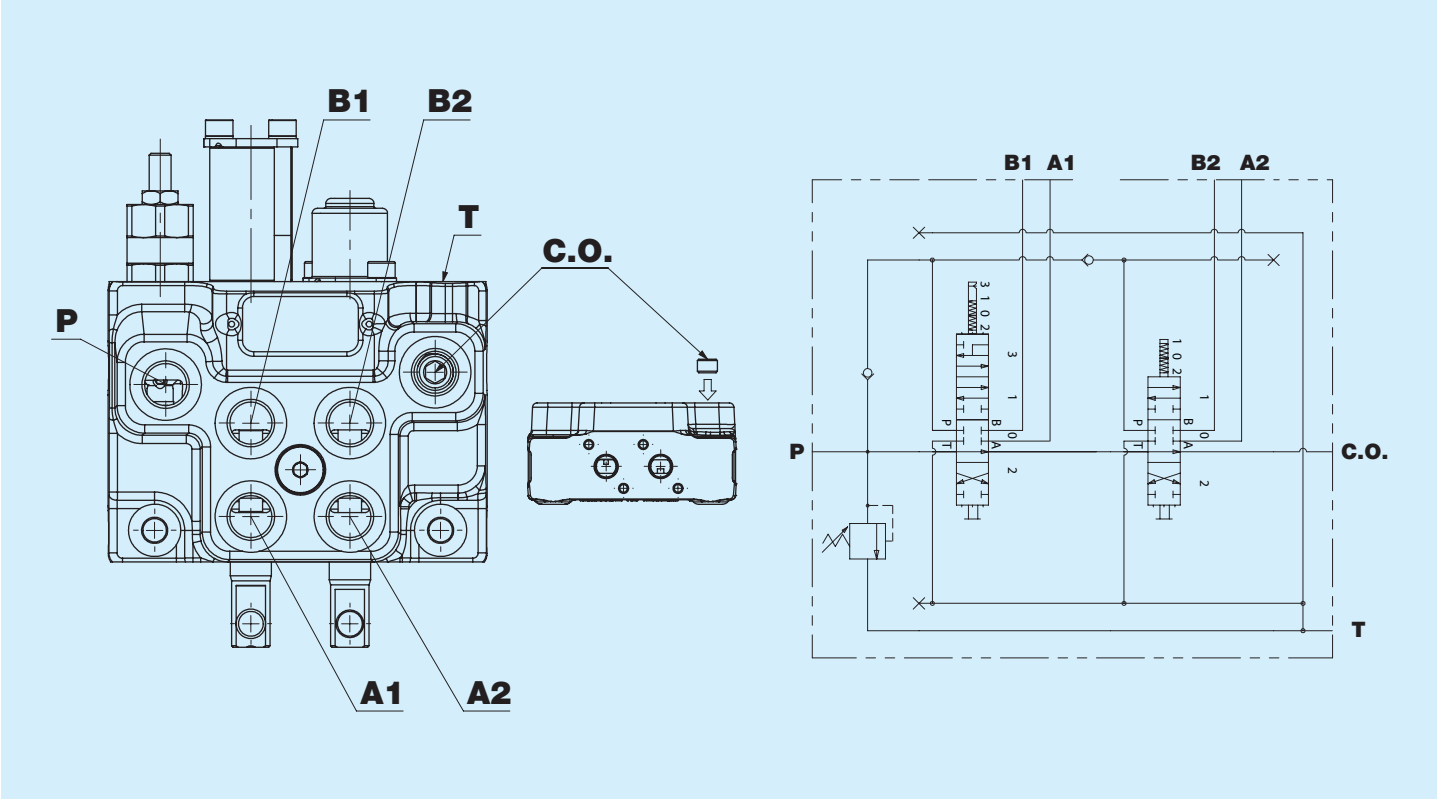
A Straight



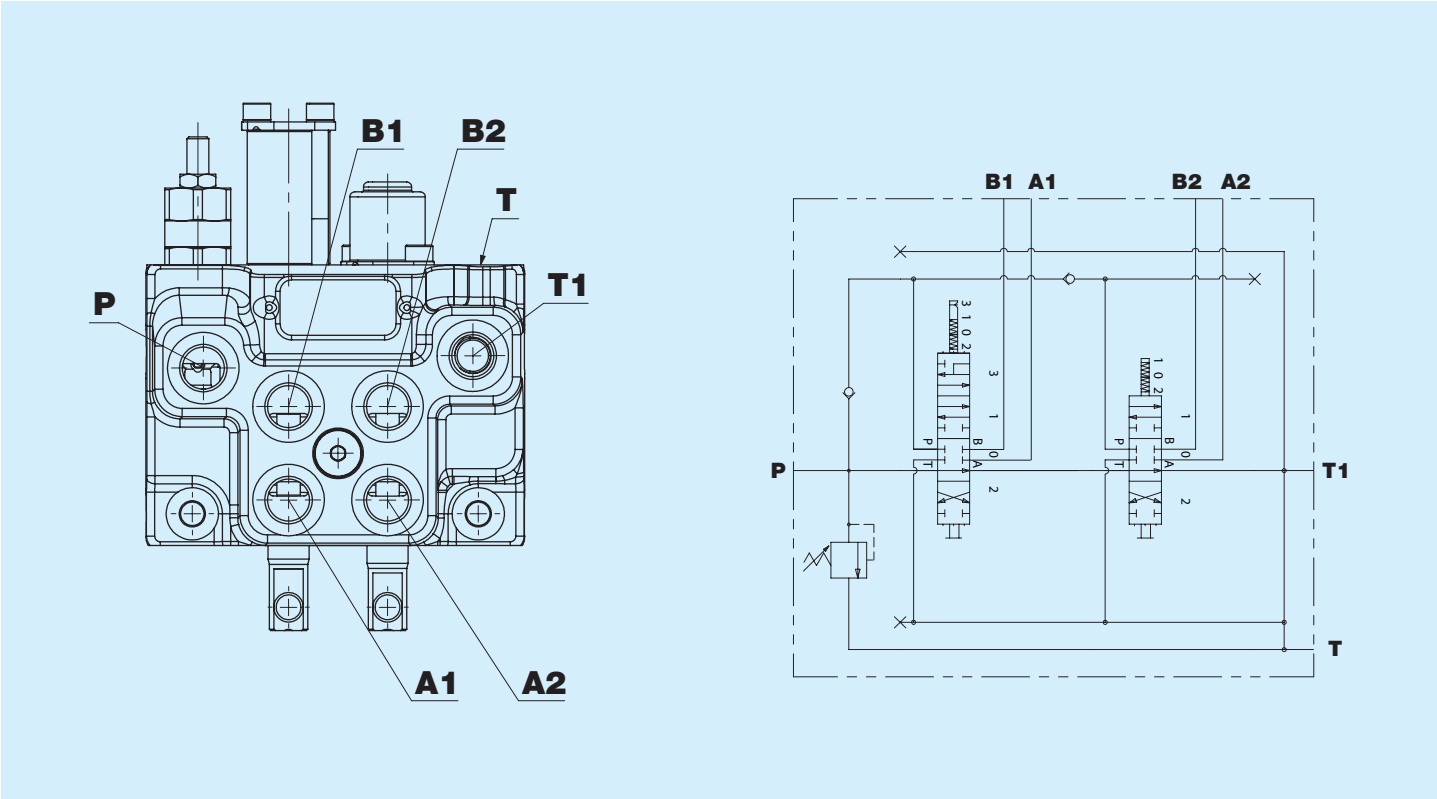
C Rotated 180°



A With carry-over port T1 (standard)



C Without carry-over



DN46CV	1	2	3	4	5	6	7	Repeat for each section of the valve								16
								8	9	10	11	12	13	14	15	

1 Number of sections

2 Sections

2 General options

N None **V** Black paint **Z** Zinc plating

3 Thread Port P1

A 3/8" GAS ISO 1179 **C** M18x1.5 ISO 9974 **E** 3/4" - 16 SAE ISO 11926
B 1/2" GAS ISO 1179 **W** M18x1.5 ISO 6149

4 5 Maximum pressure relief valve type

00 VMP replacement plug	11 110 bar	17 170 bar	23 230 bar
06 60 bar	12 120 bar	18 180 bar	24 240 bar
07 70 bar	13 130 bar	19 190 bar	25 250 bar
08 80 bar	14 140 bar	20 200 bar	
09 90 bar	15 150 bar	21 210 bar	
10 100 bar	16 160 bar	22 220 bar	

6 Sealing type maximum pressure relief valve

G Grub screw **P** Sealed **N** None

7 Thread ports A - B

A 3/8" GAS ISO 1179 **W** M18x1.5 ISO 6149 **E** 3/4" - 16 SAE ISO 11926
C M18x1.5 ISO 9974 **P** 9/16" - 18 SAE ISO 11926

8 Actuators

L Standard kit for lever holder **T** Cable setting **G** Joystick with spool lock
C Without lever holder, flat appendix **M** Joystick

9 10 Spool types

01 Spool type **04** Spool type **07** Spool type **17** Spool type

11 Spool options

A Standard spool **B** Nickel-plated spool

12 13 Spool control

0A Neutral position in 0 **NS** Neutral position in 0, detent in 3 ... For selection, see the relevant chapter
0T Neutral position in 0 ...

14 Lever options

N None	C h 184 mm / 7.24 in	L Straight vertical	Y Bent 15° horizontal
S Without lever	D h 214 mm / 8.42 in	O Bent 15° vertical	Q Bent 30° horizontal
A h 109 mm / 4.3 in	E h 254 mm / 10 in	R Bent 30° vertical	
B h 134 mm / 5.28 in	F h 304 mm / 11.97 in	M Straight horizontal	

17 18 19

15 **Lever holder position**

A Straight	C Rotated 180°	N None
-------------------	-----------------------	---------------

16 **Thread port T**

A 3/8" GAS ISO 1179	W M18x1.5 ISO 6149	E 3/4" - 16 SAE ISO 11926
C M18x1.5 ISO 9974	P 9/16" - 18 SAE ISO 11926	

17 **Thread port T1**

A 3/8" GAS ISO 1179	C M18x1.5 ISO 9974	W M18x1.5 ISO 6149	E 3/4" - 16 SAE ISO 11926
----------------------------	---------------------------	---------------------------	----------------------------------

18 **Options on port T-T1**

A T open - T1 open (standard)	B T open - T1 plugged	C T plugged - T1 open
--------------------------------------	------------------------------	------------------------------

19 **Discharge options**

A With carry-over port T1 (standard)	B Carry-over option port T1	C Without carry-over
---	------------------------------------	-----------------------------