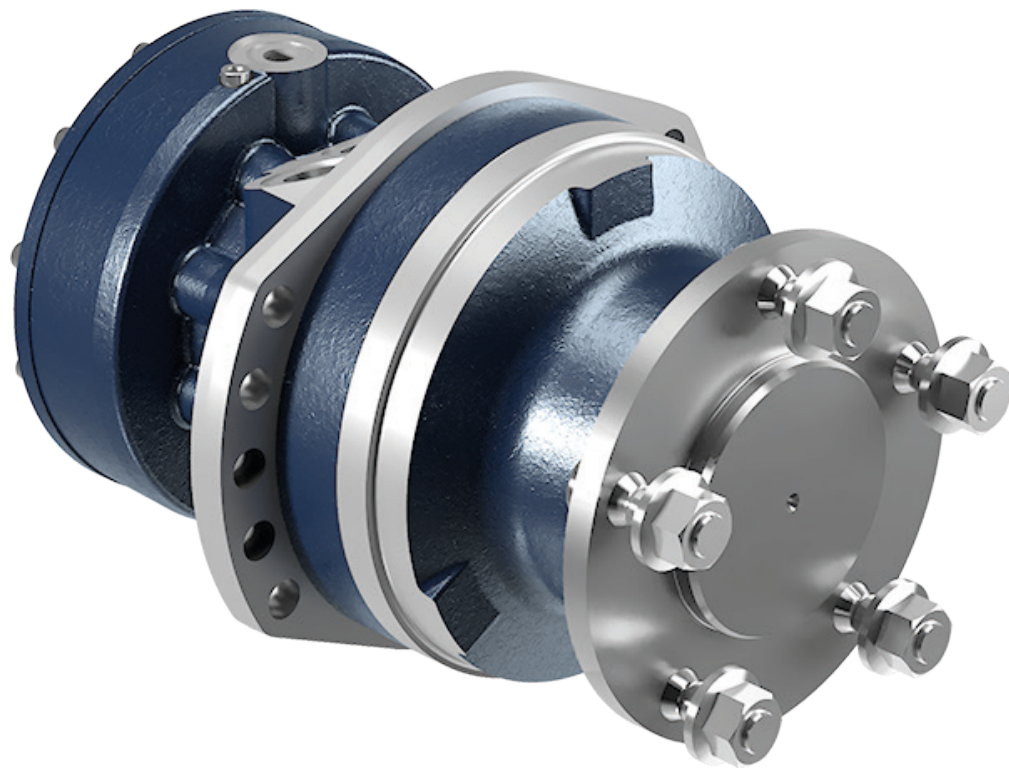
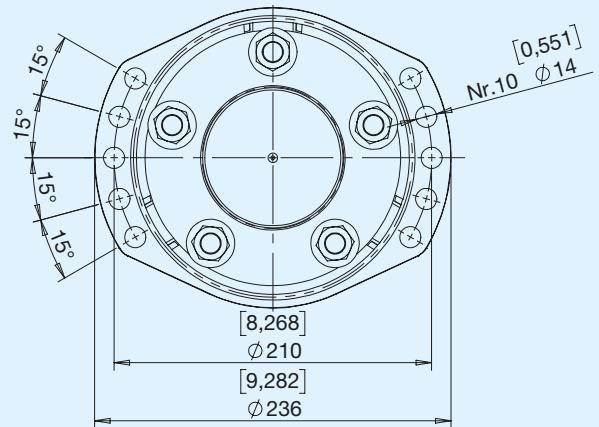
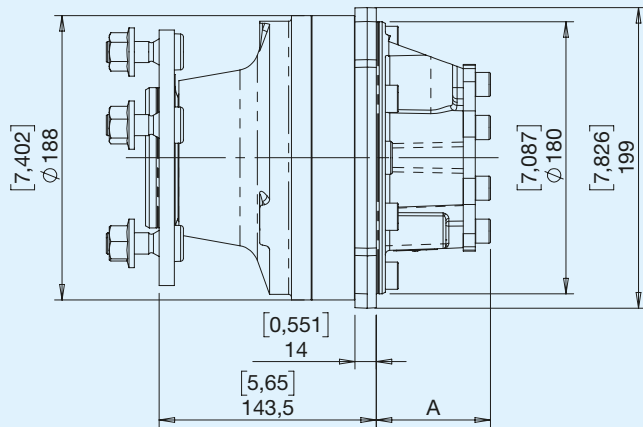


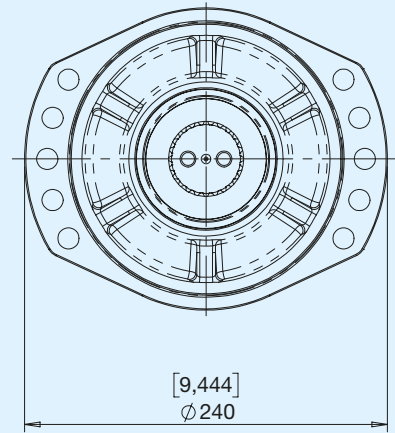
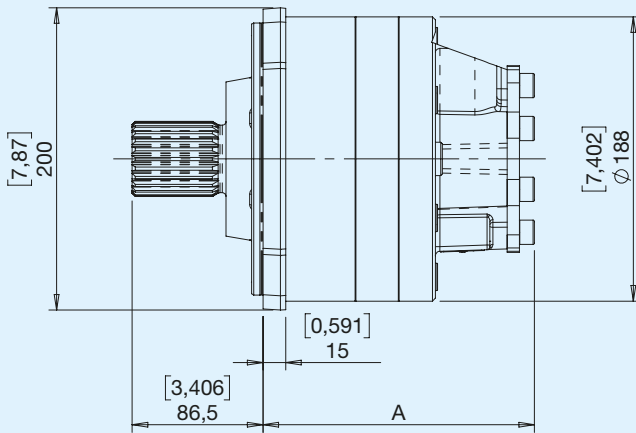
Series 2 HPR motors



Before use, carefully read the GENERAL INSTRUCTIONS FOR USE OF CLOSED CIRCUIT AXIAL PISTON PUMPS AND MOTORS.



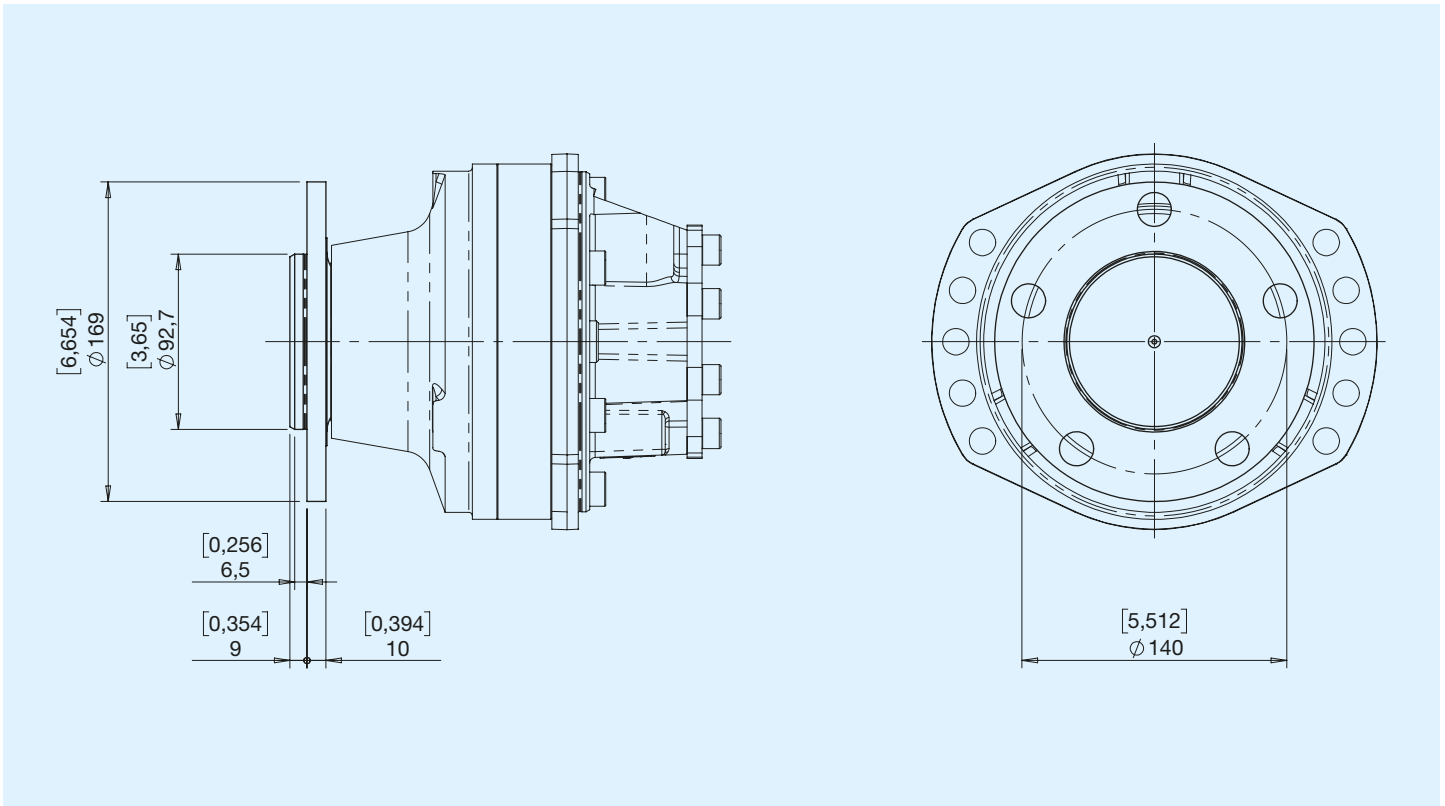
Wheel drive version



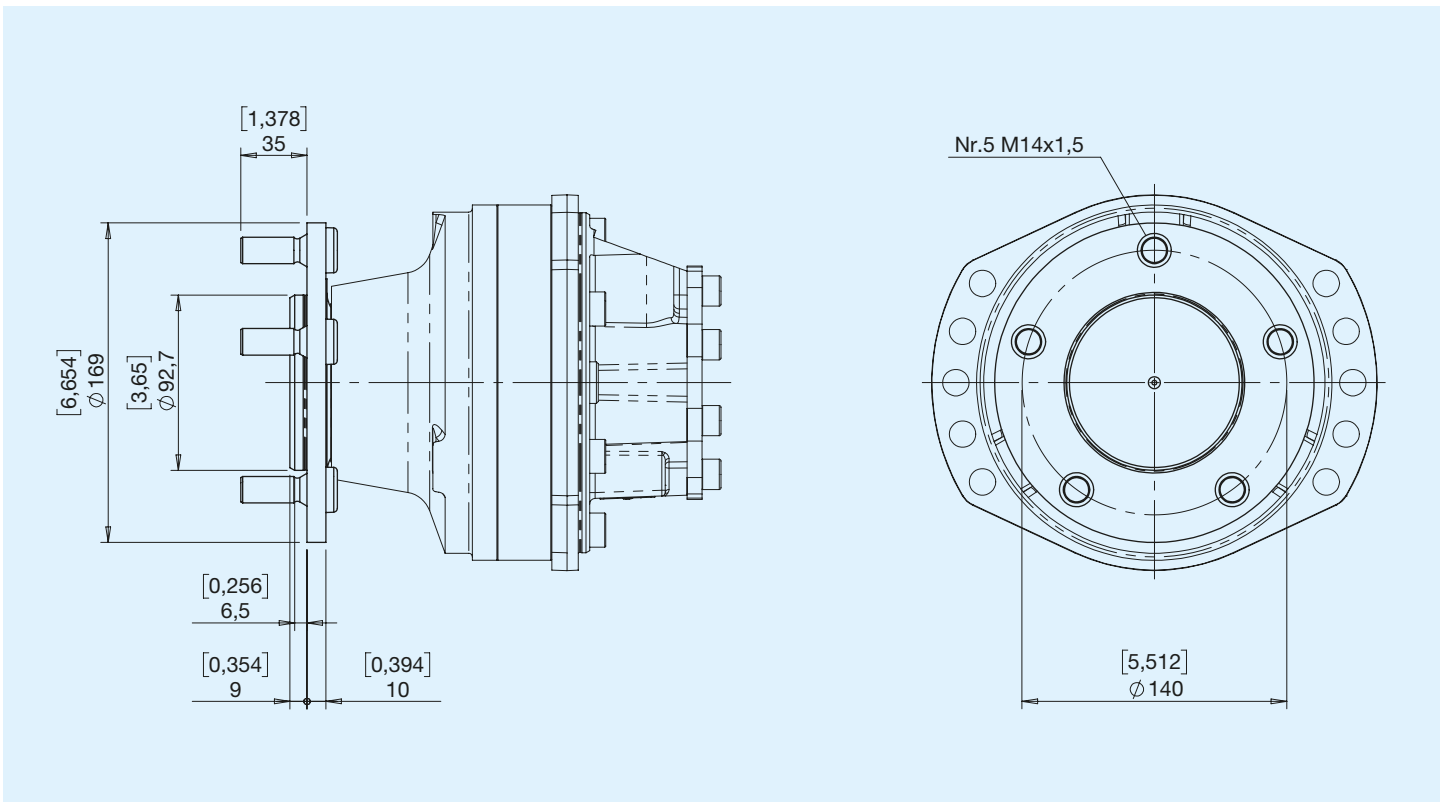
Male splined shaft version

HPR2	Nominal displacement				Rotational speed		Operating pressure		Max power		Weight	
	Fixed/ 1st speed		2nd speed		Fixed/ 1st speed	2nd speed	psi		Fissa/ 1a velocità	2nd speed	kg	lbs
	cm ³	in ³	cm ³	in ³	RPM	RPM	5800	psi	kW	kW		
210	213	13,00	107	6,53	470	470	450	6525	18	12	33	73
230	235	14,34	118	7,20	435	435	450	6525	18	12	33	73
260	261	15,93	131	7,99	390	390	450	6525	18	12	33	73
330	333	20,32	167	10,19	265	336	400	5800	22	16	33	73
360	367	22,40	184	11,23	245	311	400	5800	22	16	33	73
400	408	24,90	204	12,45	220	279	400	5800	22	16	33	73

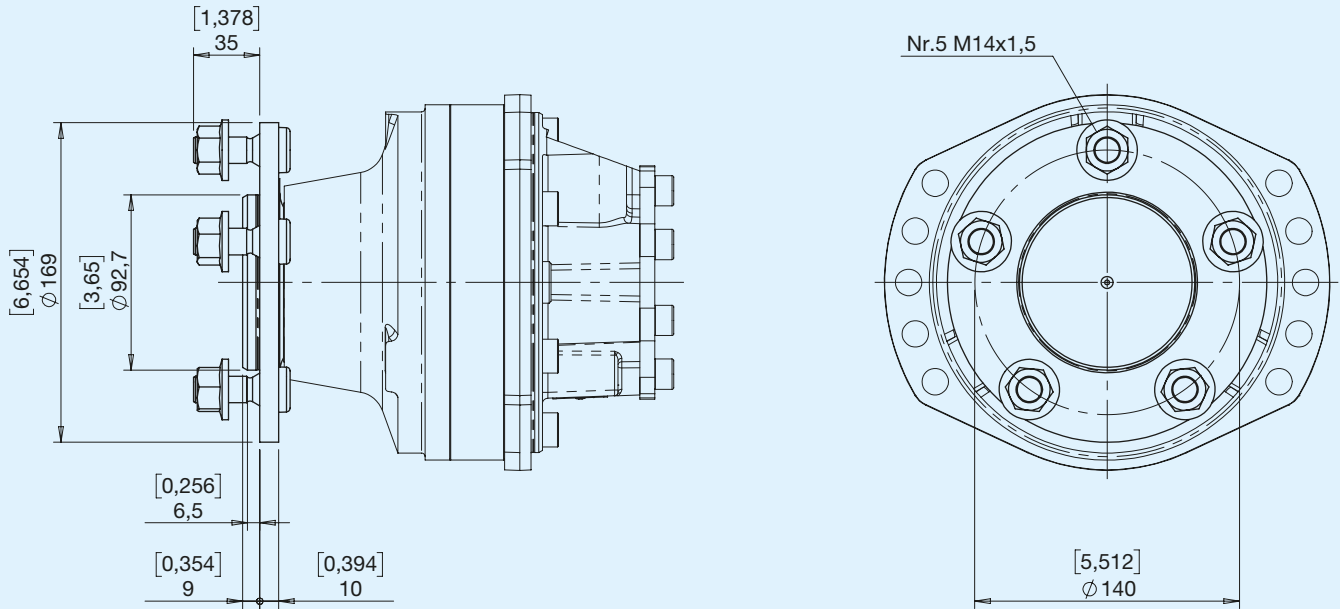
R Rear (wheel)



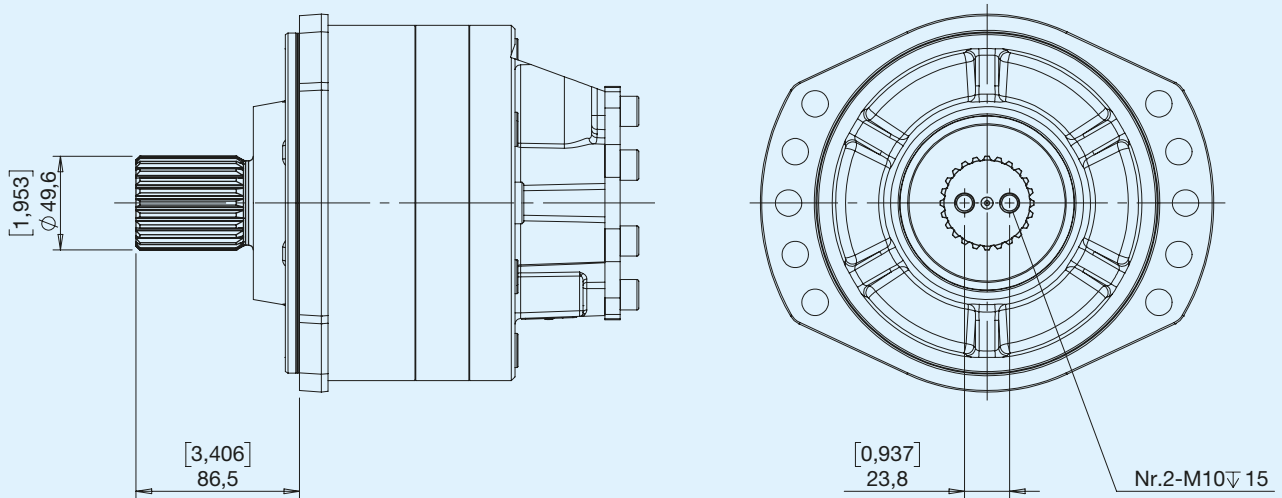
1 Rear (wheel with screws)



2 Rear (wheel with screws+nuts)

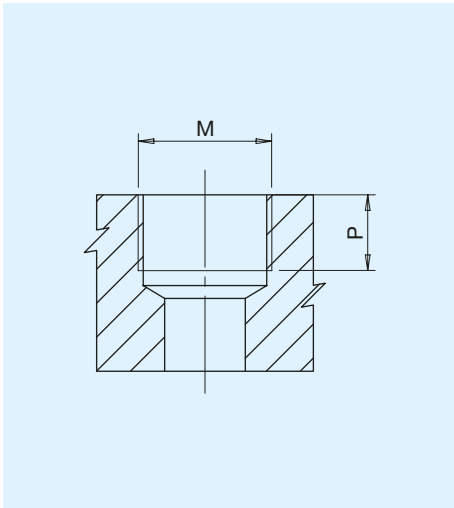


E Shaft DIN 5480 W50x2x30x24



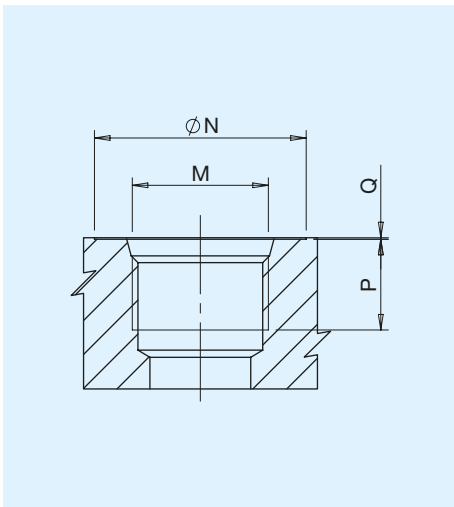
Max. torque 2860 Nm

Type G



Type	M		P	
		Nm	mm	in
G2	Port ISO 1179-1 - G 1/4	17	15	0.59
G3	Port ISO 1179-1 - G 3/8	38	12.5	0.49
G4	Port ISO 1179-1 - G 1/2	70	15	0.59

Type U

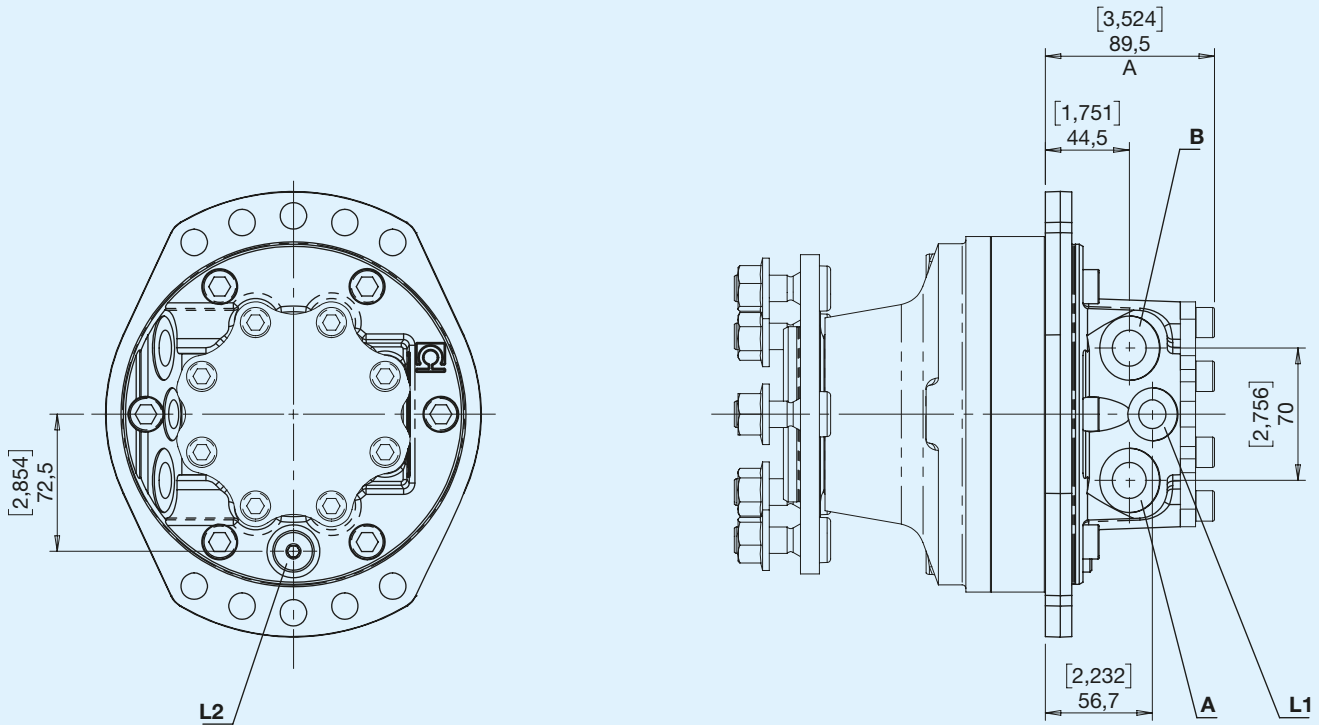


Type	Dim.	N		P		Q		M	Nm
		mm	in	mm	in	mm	in		
U3	3/8"	26	1,02	15	0,59	0,3	0,01	Port ISO 11926-1 - 9/16-18	38
U4	1/2"	30	1,18	15	0,59	0,3	0,01	Port ISO 11926-1 - 3/4-16	47
U5	5/8"	34	1,34	15	0,59	0,3	0,01	Port ISO 11926-1 - 7/8-14	70

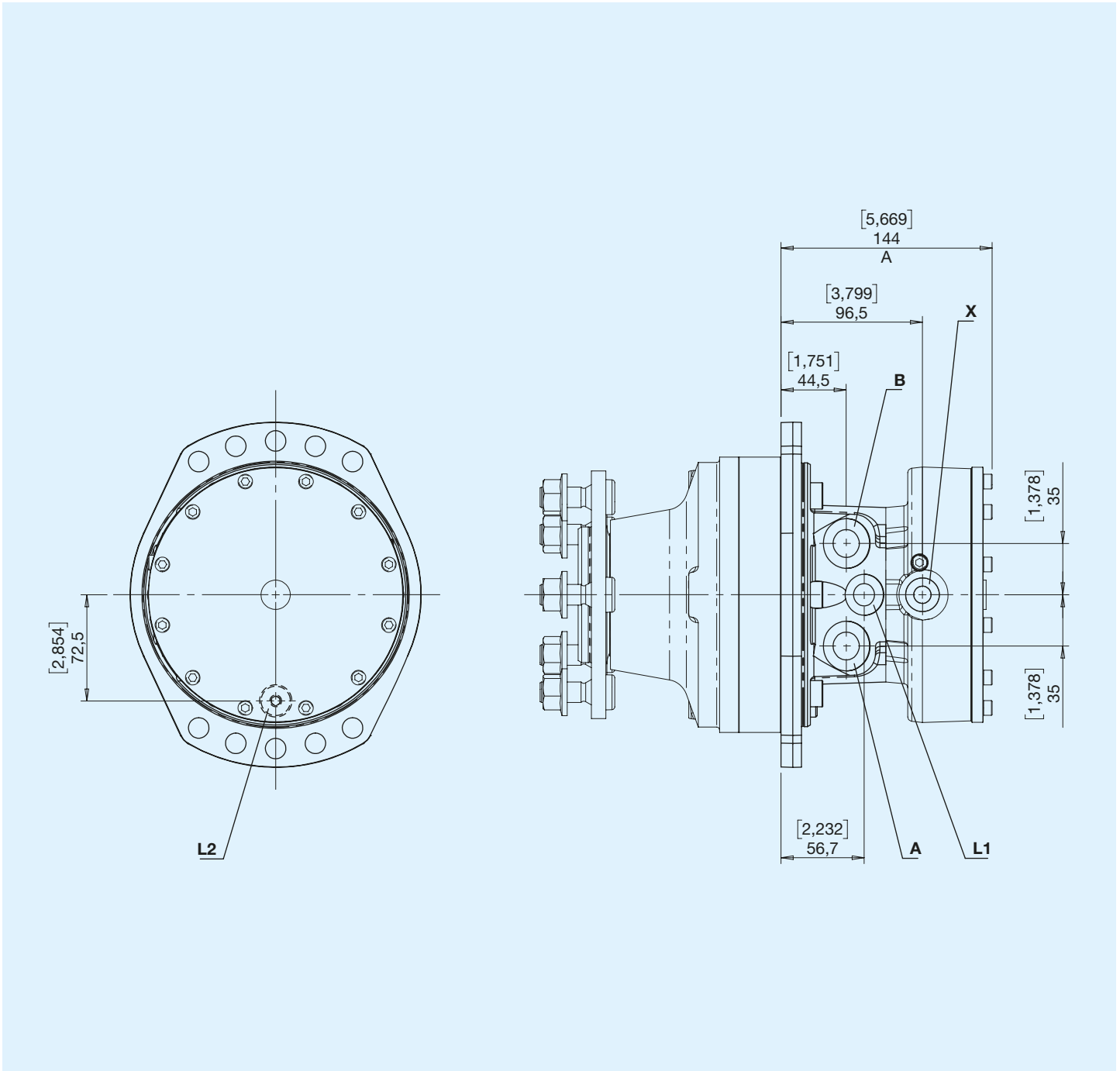
Combinations

Type	Input/Output A-B	Drain port L1-L2	Displacement change Y	Brake release X
G	G4	G3	G2	G2
U	U5	U4	U3	U3

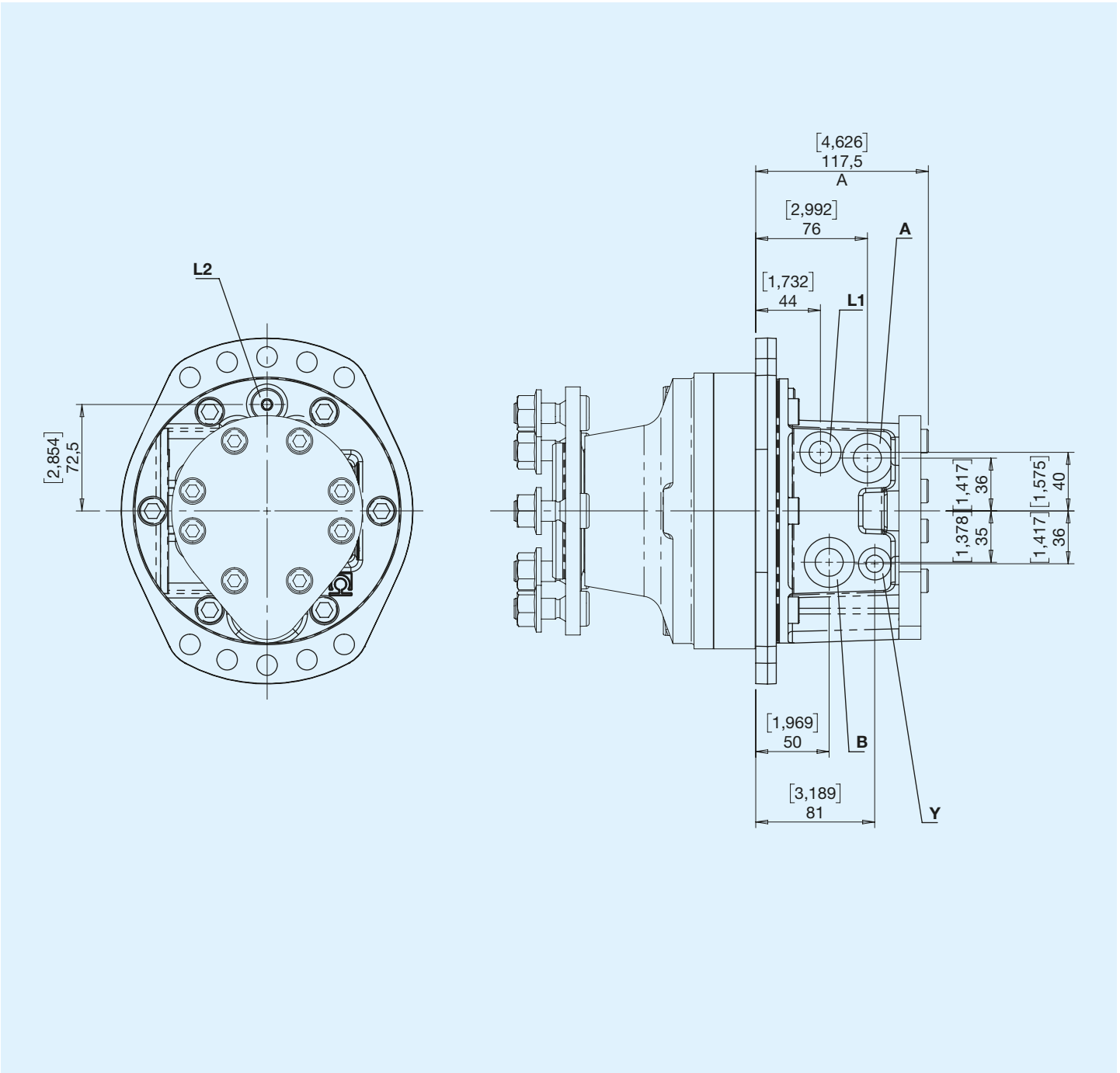
FC Fixed without Brake



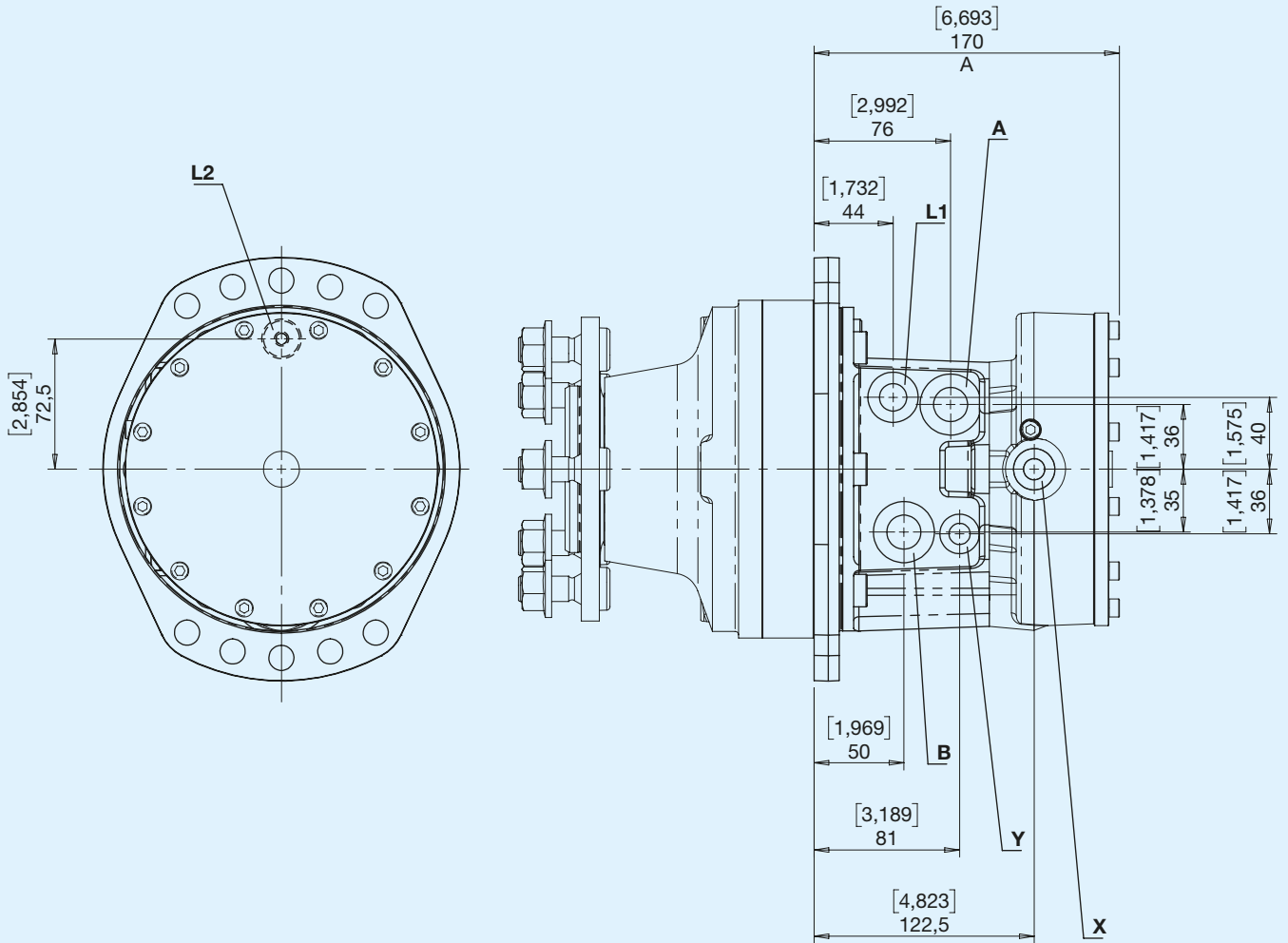
FF Fixed with Brake



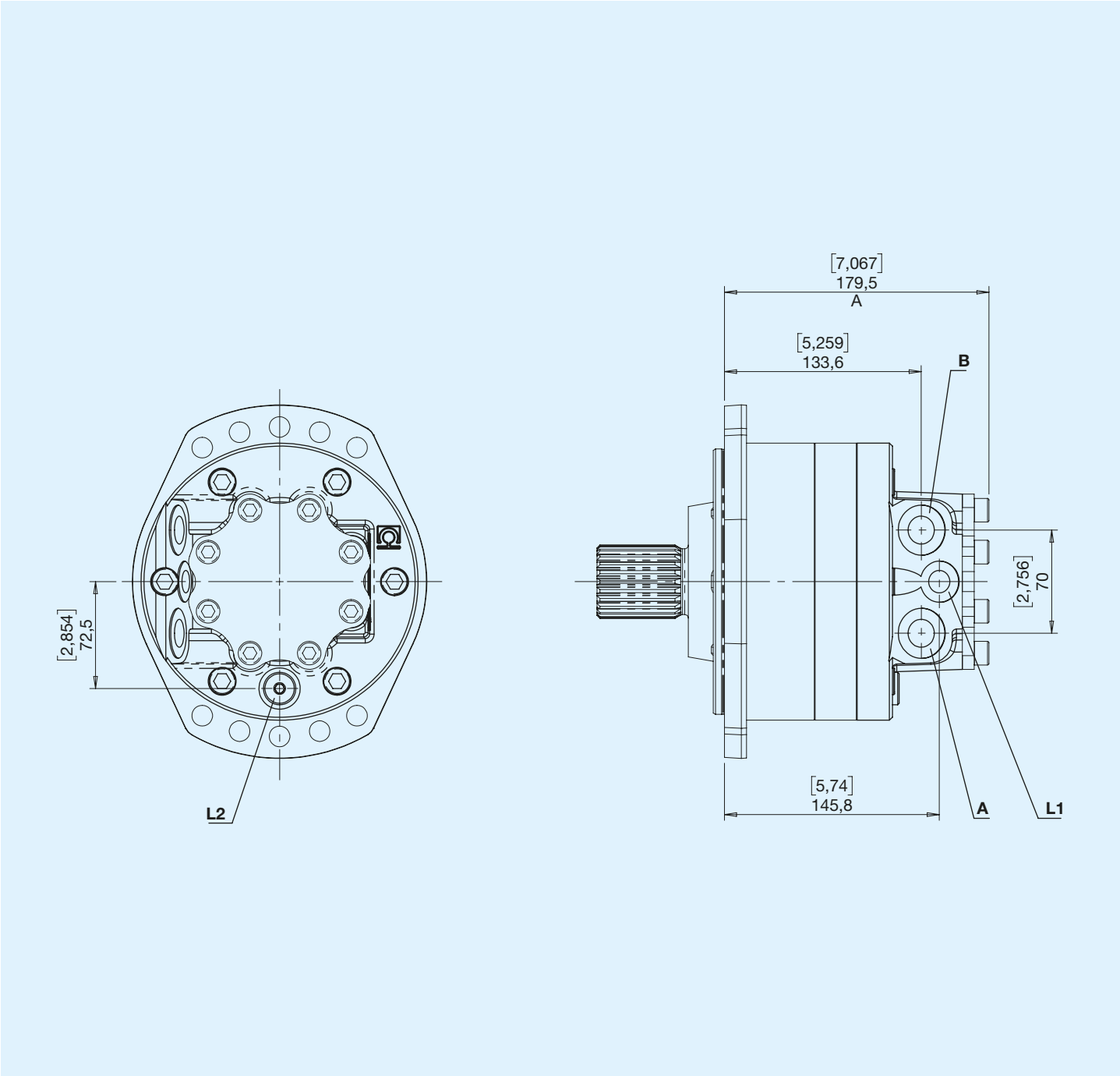
VC 2 Speeds without Brake



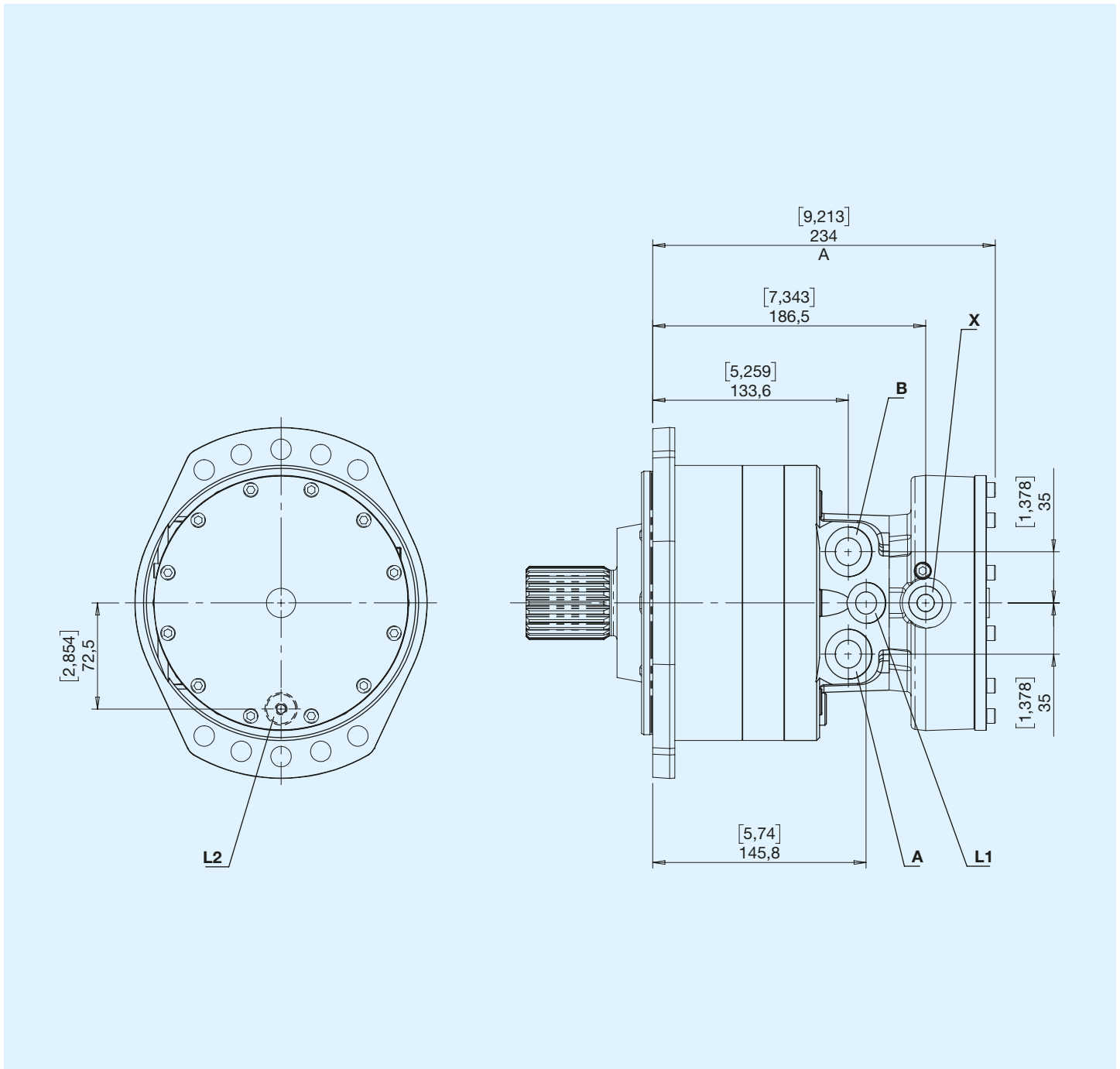
VF 2 Speeds with Brake



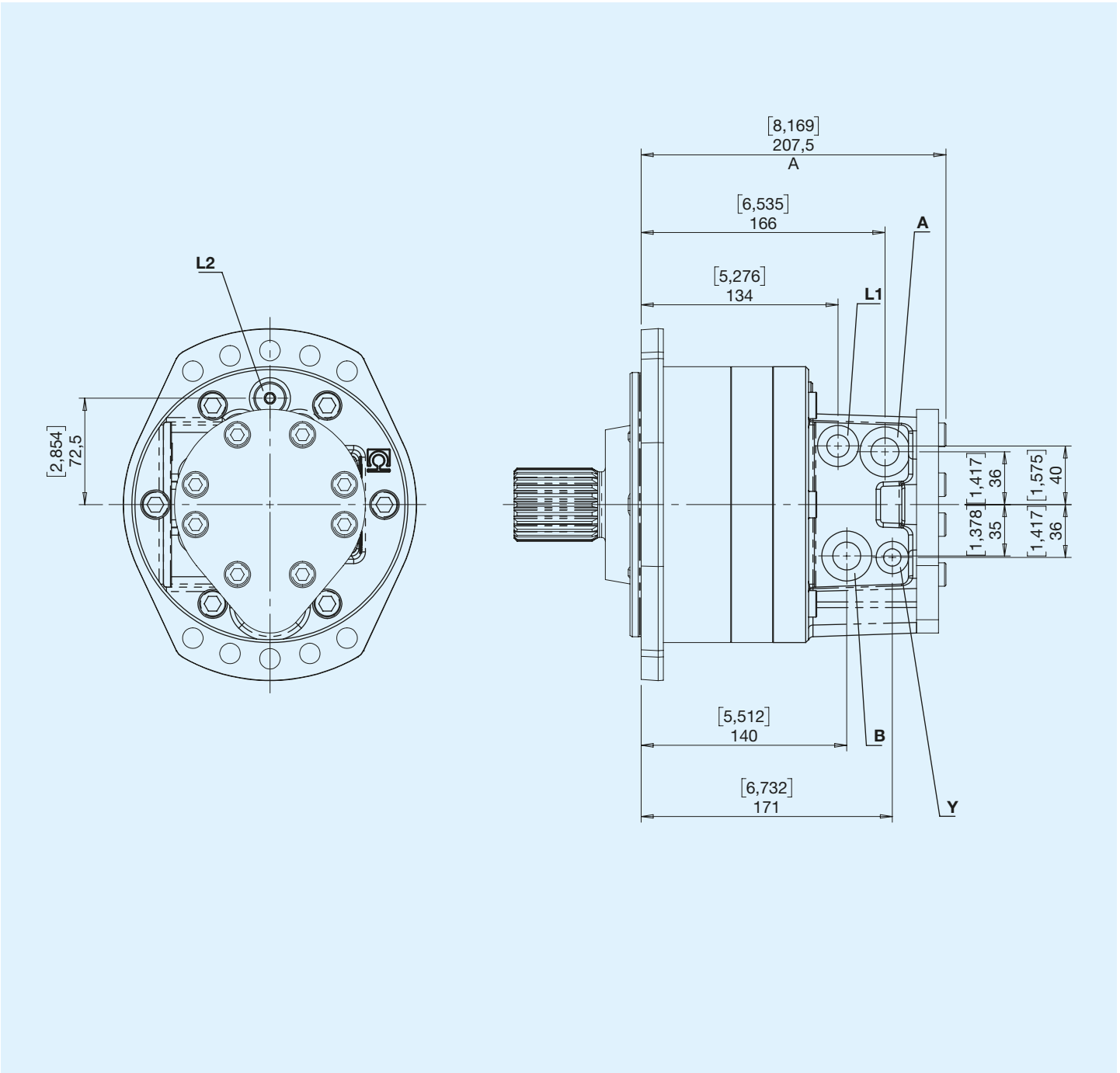
AC Fixed without Brake



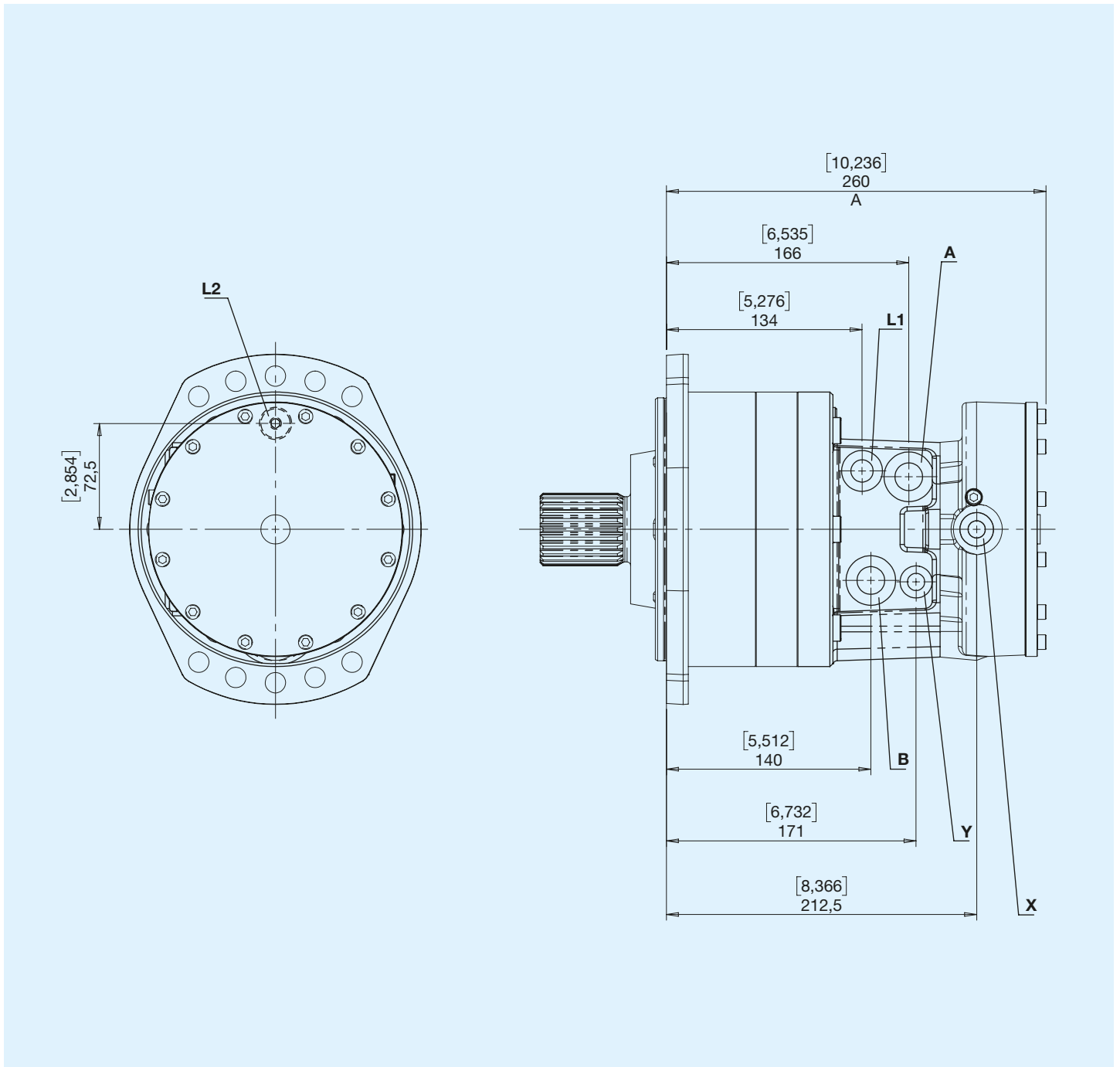
AF Fixed with Brake

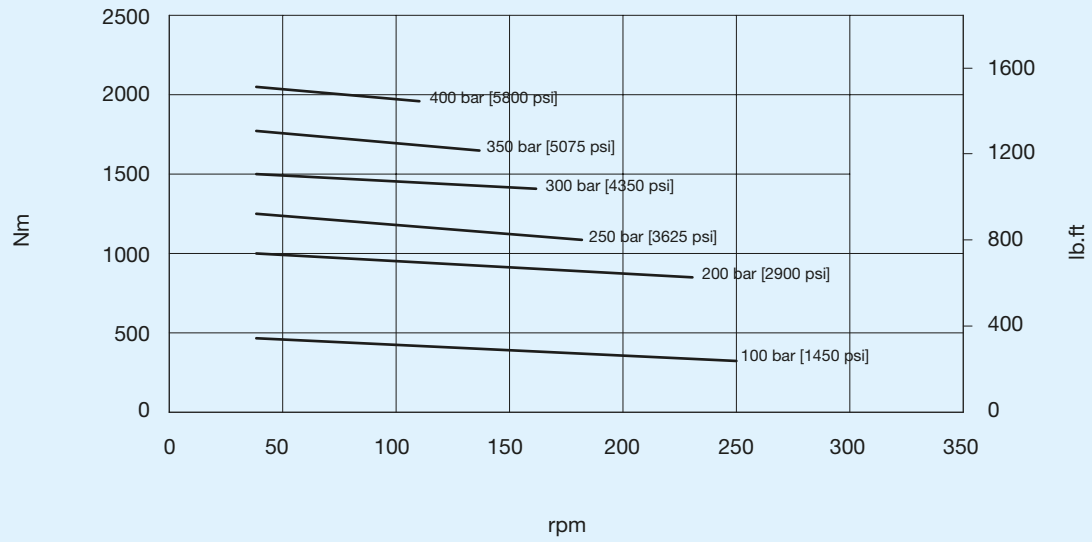


WC 2 Speeds without Brake

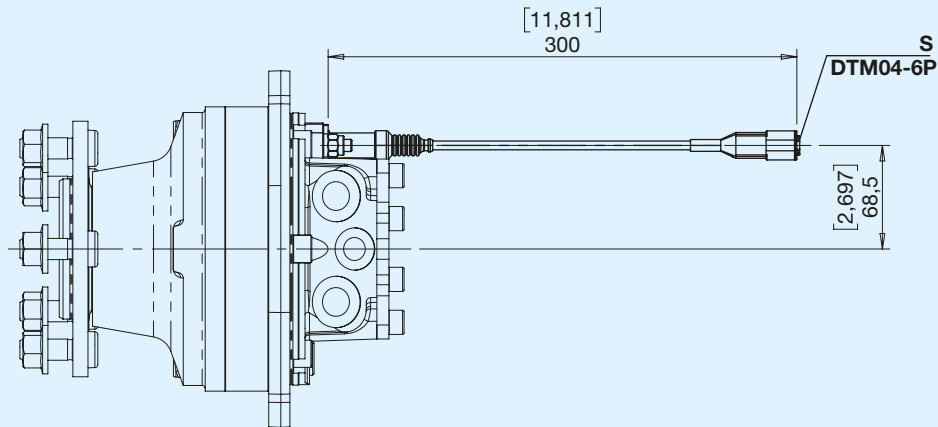


WF 2 Speeds with Brake

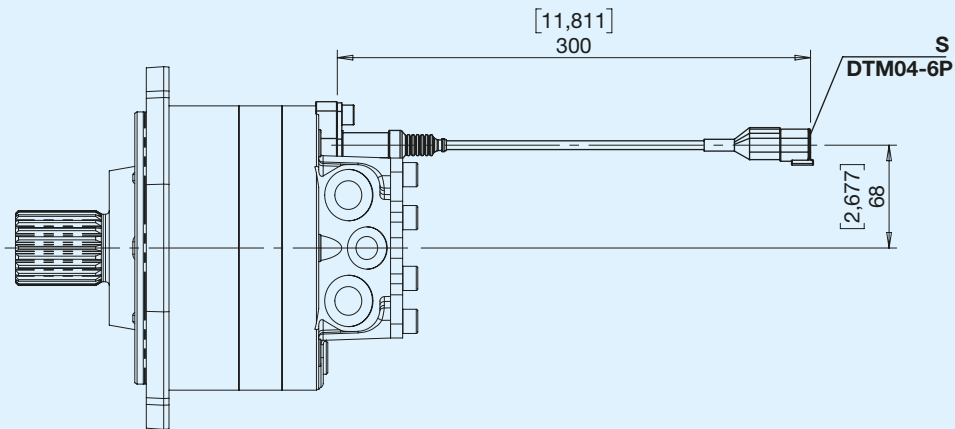




S Speed sensor



Motor wheel version

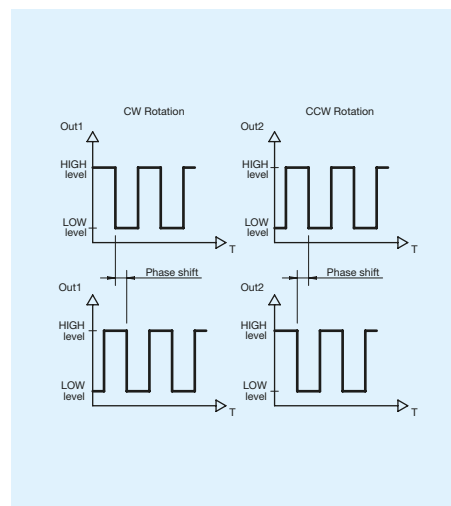


Splined shaft version

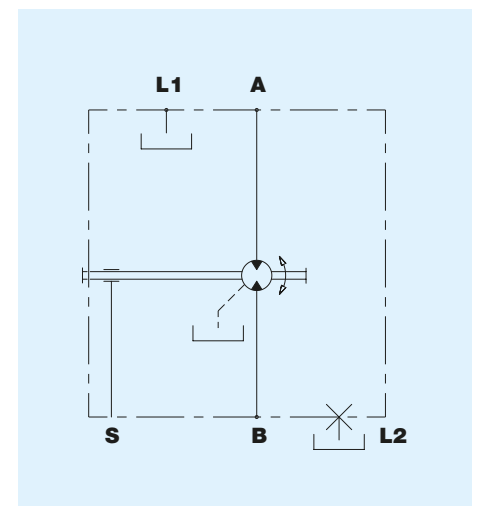
Characteristics

Connector: **DTM04-6**
 Number of output channels: **2**
 Output type: **see graphics**
 Supply voltage range: **4,5Vdc ÷ 30Vdc**
 Max output current with load: **700mA**
 Max frequency to be read: **10kHz**
 Min frequency to be read: **zero speed**
 Sensor case operating temperature range: **-40°C ÷ +125°C**
 Sensor harness operating temperature range: **-40°C ÷ +105°C**
 Sensor case IP protection degree: **IP69K**
 Connector side IP protection degree: **IP67**

Output signal



Hydraulic diagram



HPR	1	2 3	4 5 6	7	8	9	10	11 12 13
1	Series							
2	2							
2 3	Type - Direction of rotation							
	FB Fixed - Bidirectional	VR Variable - Right	VL Variable - Left					
4 5 6	Displacement							
	210	260	360					
	230	330	400					
7	Flanges/Shafts							
	R Rear (wheel)	1 Rear (wheel with screws)	2 Rear (wheel with screws+nuts)	E Shaft DIN 5480 W50x2x30x24				
8	Brake release							
	F With Brake	C Without Brake						
9	Type of ports							
	G Gas	U Unf						
10	Accessories							
	0 No option	C Painting	S Speed sensor					
11 12 13	Special versions							
	...							