

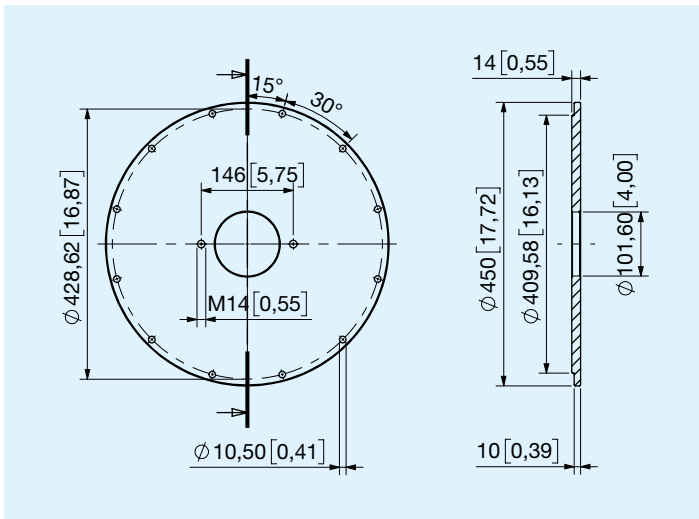
# Sistemi di accoppiamento rigido SAE **KDR 600-675 Nm**

Coppia nominale trasmissibile 675 Nm

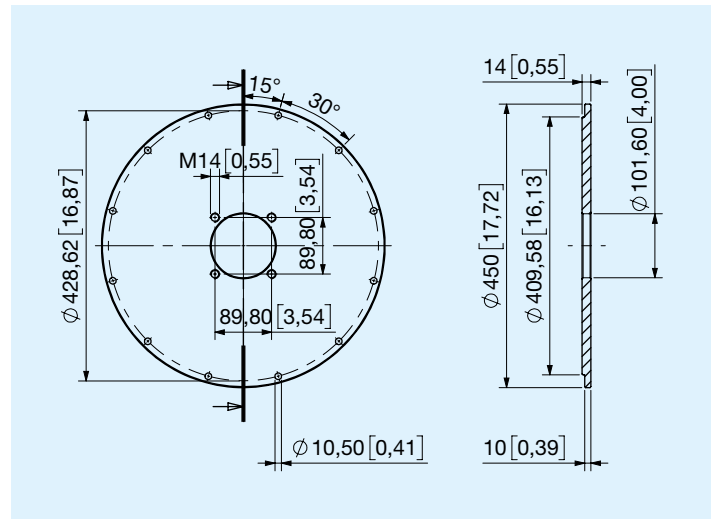


Prima di iniziare l'utilizzo leggere attentamente il documento ISTRUZIONI GENERALI D'IMPIEGO PER SISTEMI DI ACCOPPIAMENTO

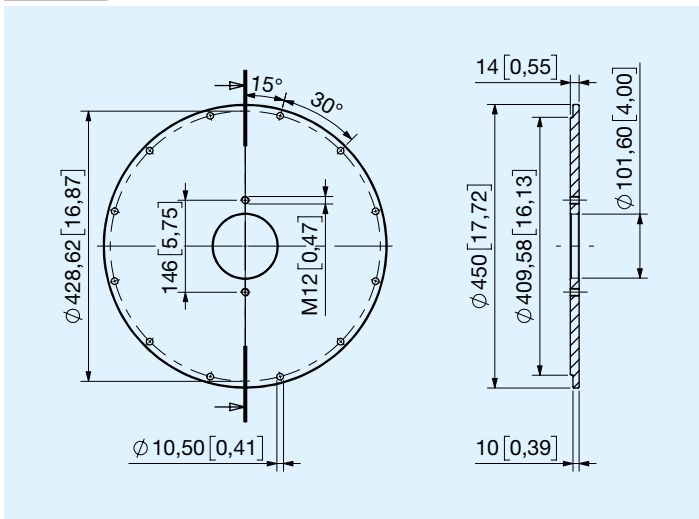
**ABA** SAE 3 B - 2 fori M14



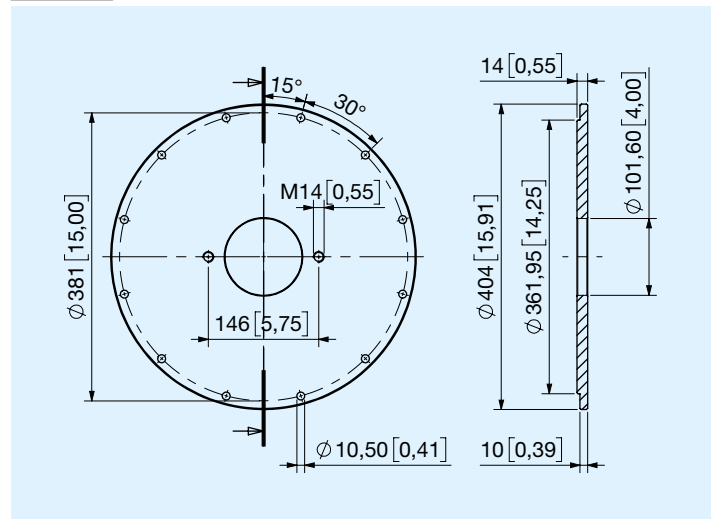
**ABB** SAE 3 B - 4 fori M14



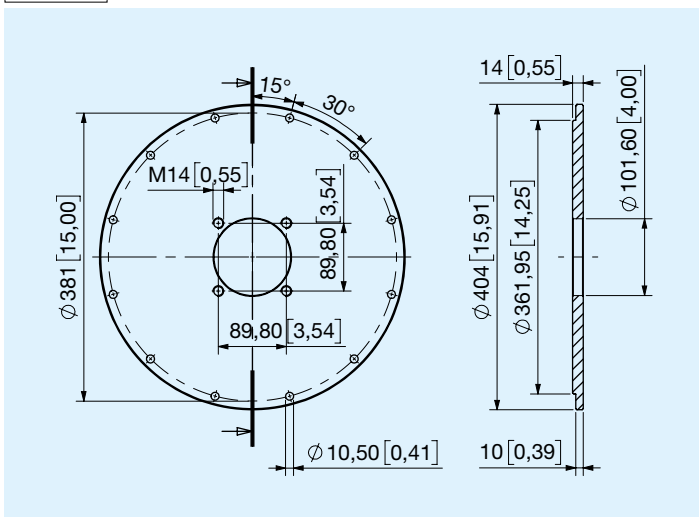
**ABC** SAE 3 B - 2 fori M12



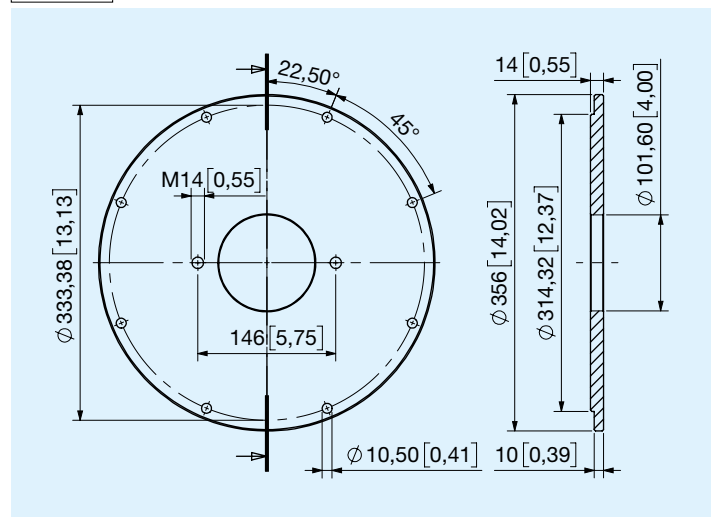
**ACA** SAE 4 B - 2 fori M14



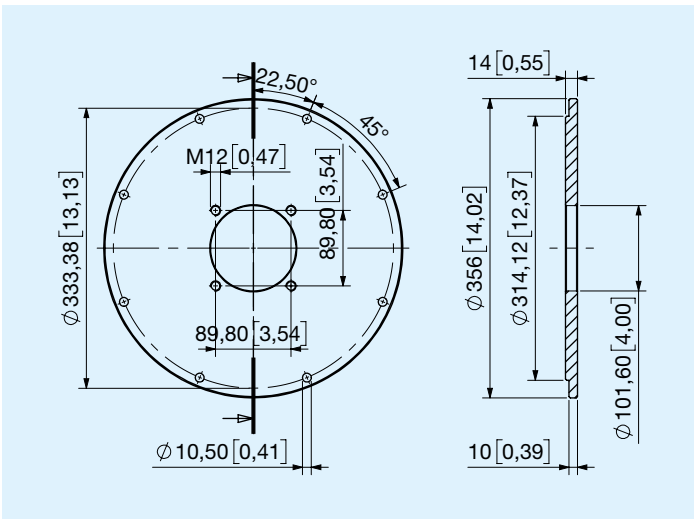
**ACB** SAE 4 B - 4 fori M14



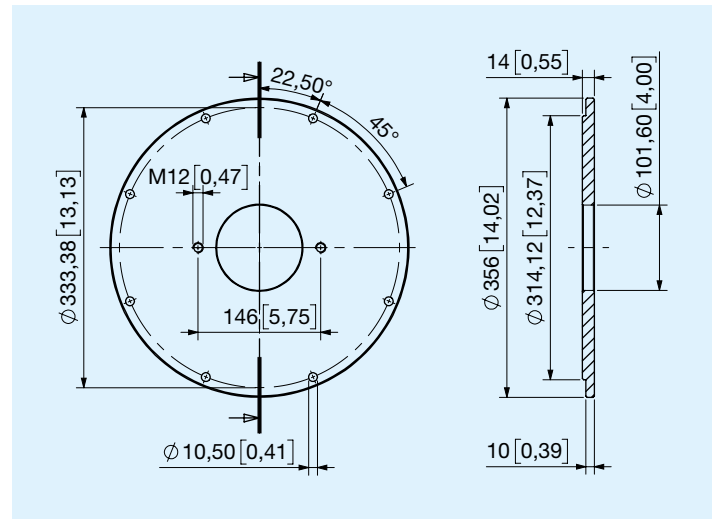
**ADA** SAE 5 B - 2 fori M14



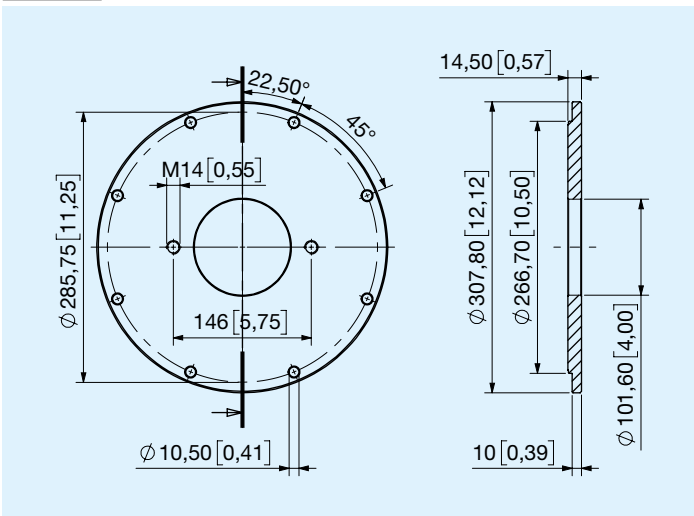
**ADB** SAE 5 B - 4 fori M14



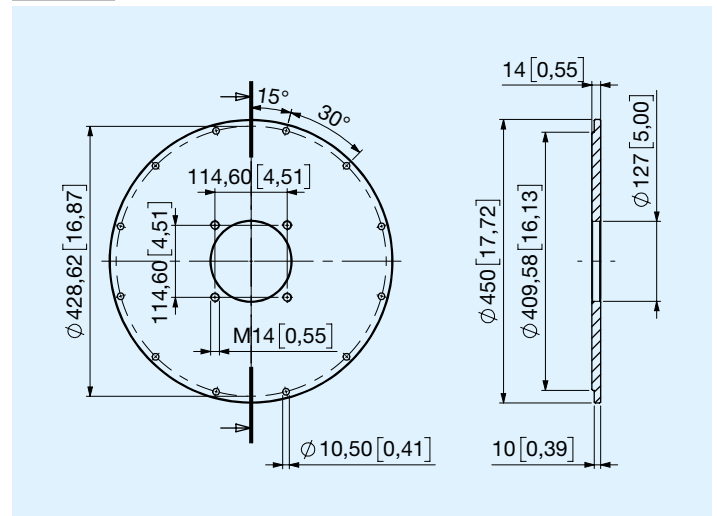
**ADC** SAE 5 B - 2 fori M12



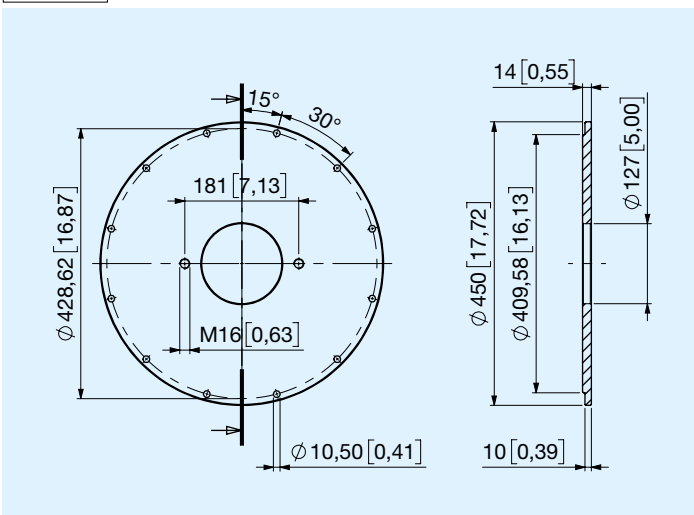
**AEA** SAE 6 B - 2 fori M14



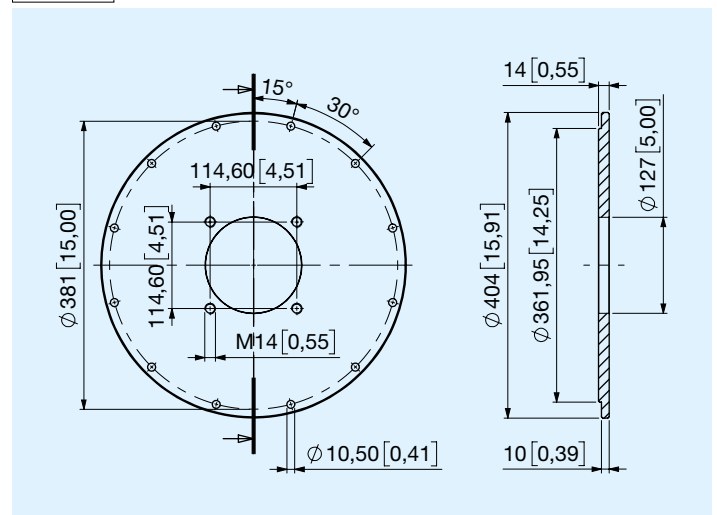
**AGA** SAE 3 C - 4 fori M14



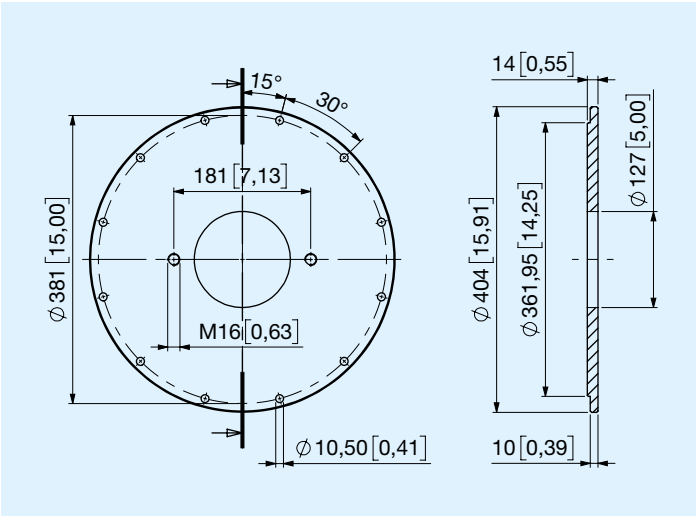
**AGD** SAE 3 C - 2 fori M16



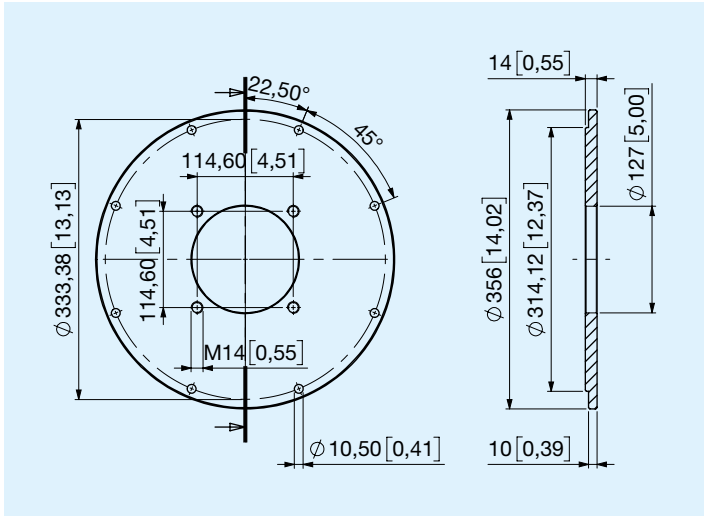
**AHA** SAE 4 C - fori M14



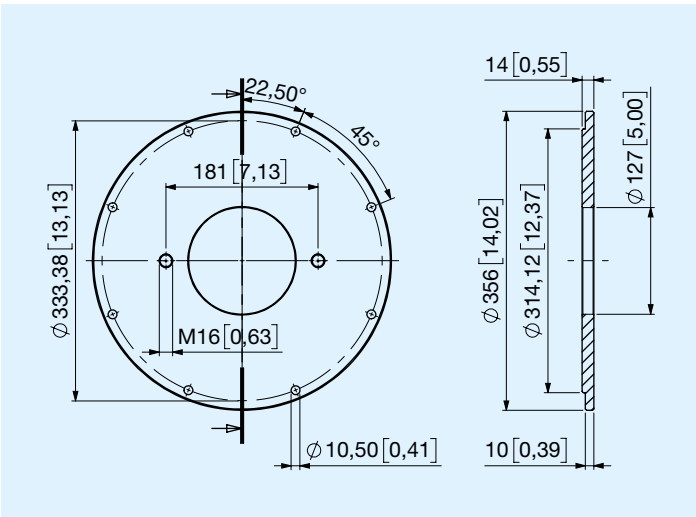
**AHD** SAE 4 C - 2 fori M16



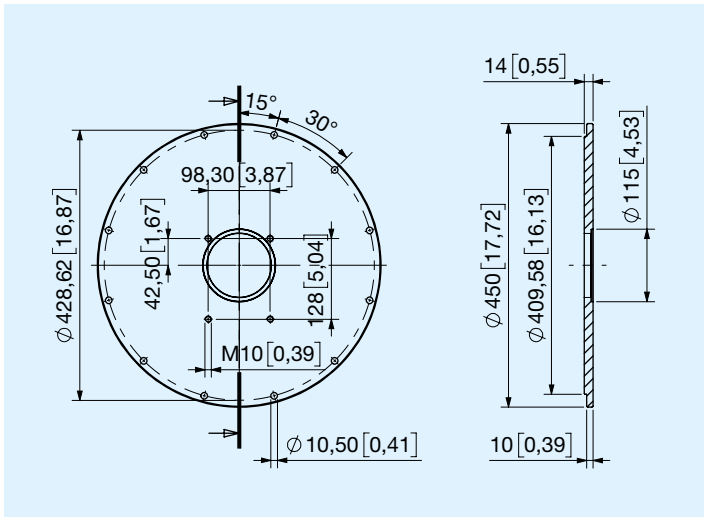
**ALA** SAE 5 C - 4 fori M14



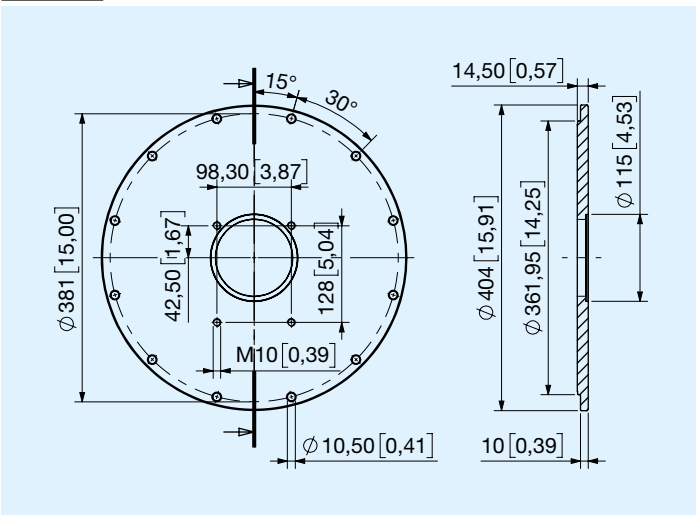
**ALC** SAE 5 C - 2 fori M16



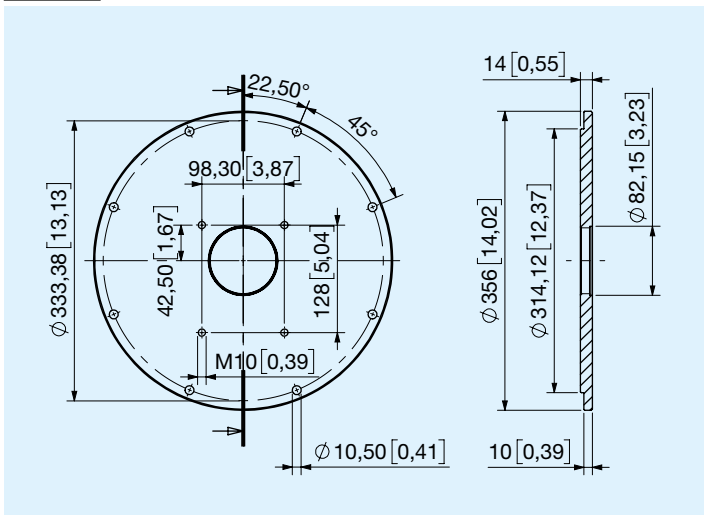
**ARG** SAE 3 GR. 3



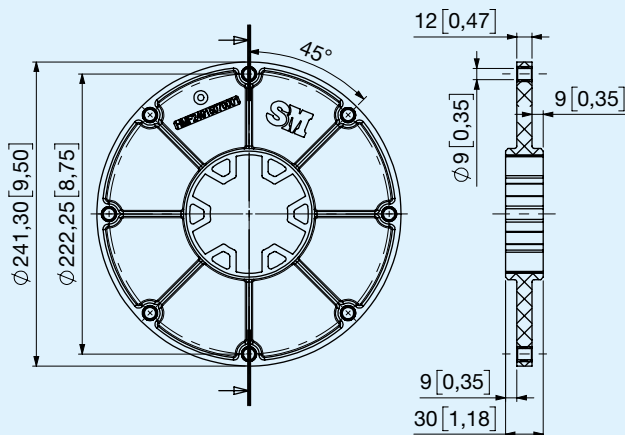
**ASG** SAE 4 GR. 3



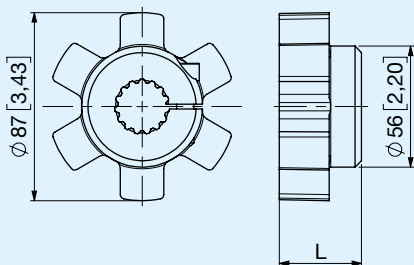
**ATC** SAE 5 GR. 3



## 102 Flangia 7" 1/2

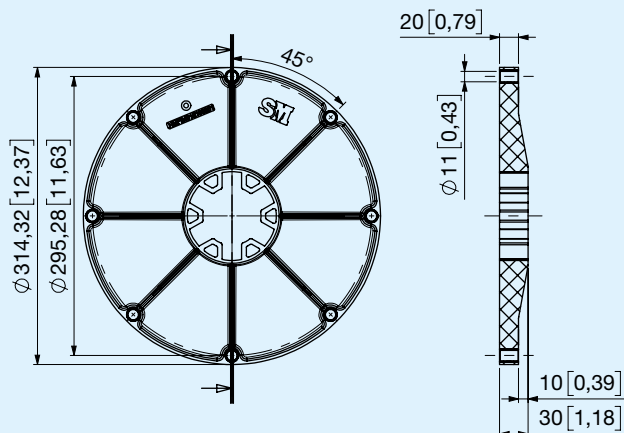


## Mozzi per flangia 102 - Coppia Nom. 600 Nm

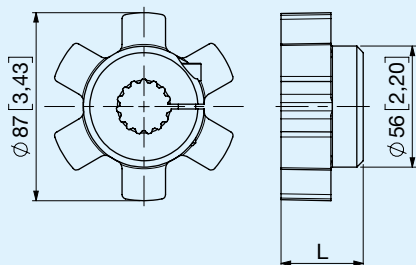


Codice	Albero Pompa	Denti	L mm	Peso Kg	j kgm <sup>2</sup>	Vite	Serr. Nm
<b>HAA</b>	Z.13 16/32	6	38	0,9	0,0008	M8	41
<b>HAC</b>	W30x2x14	6	38	0,9	0,0008	M8	41
<b>HAB</b>	Z.15 16/32	6	38	0,9	0,0008	M8	41
<b>HAE</b>	W25x1,25x18	6	38	0,9	0,0008	M8	41

## 106 Flangia 10"



## Mozzi per flangia 106 - Coppia Nom. 675 Nm



Codice	Albero Pompa	Denti	L mm	Peso Kg	j kgm <sup>2</sup>	Vite	Serr. Nm
<b>HAG</b>	Z.13 16/32	6	52	1,1	0,0009	M8	41
<b>HAK</b>	Z.14 12/24	6	52	1,1	0,0009	M8	41
<b>HAH</b>	W30x2x14	6	52	1,1	0,0009	M8	41
<b>HAD</b>	Z.15 16/32	6	52	1,1	0,0009	M8	41
<b>HAI</b>	W25x1,25x18	6	52	1,1	0,0009	M8	41
<b>HAF</b>	GR. 3	6	52	1,1	0,0009		



**KDR 600-675 Nm**

1	2	3	4	5	6	7	8	9

1	2	3	Campane					
			<b>ABA</b> SAE 3 B - 2 fori M14	<b>ADA</b> SAE 5 B - 2 fori M14	<b>AGD</b> SAE 3 C - 2 fori M16	<b>ARG</b> SAE 3 GR. 3		
			<b>ABB</b> SAE 3 B - 4 fori M14	<b>ADB</b> SAE 5 B - 4 fori M14	<b>AHA</b> SAE 4 C - fori M14	<b>ASG</b> SAE 4 GR. 3		
			<b>ABC</b> SAE 3 B - 2 fori M12	<b>ADC</b> SAE 5 B - 2 fori M12	<b>AHD</b> SAE 4 C - 2 fori M16	<b>ATC</b> SAE 5 GR. 3		
			<b>ACA</b> SAE 4 B - 2 fori M14	<b>AEA</b> SAE 6 B - 2 fori M14	<b>ALA</b> SAE 5 C - 4 fori M14			
			<b>ACB</b> SAE 4 B - 4 fori M14	<b>AGA</b> SAE 3 C - 4 fori M14	<b>ALC</b> SAE 5 C - 2 fori M16			
4	5	6	Flange					
			<b>102</b> 7" 1/2	<b>106</b> 10"				
7	8	9	Mozzi					
			<b>HAA</b> Z.13 16/32 L=38	<b>HAC</b> W30x2x14 L=38	<b>HAD</b> Z.15 16/32 L=52	<b>HAF</b> GR. 3 L=52		
			<b>HAG</b> Z.13 16/32 L=52	<b>HAH</b> W30x2x14 L=52	<b>HAE</b> W25x1,25x18 L=38			
			<b>HAK</b> Z.14 12/24 L=52	<b>HAB</b> Z.15 16/32 L=38	<b>HAI</b> W25x1,25x18 L=52			