



**MOTORI A PISTONI ASSIALI
A CILINDRATA FISSA**

***FIXED-DISPLACEMENT
AXIAL PISTON MOTORS***

KONSTANT-AXIALKOLBENMOTOREN

**HP M8
77.82.92.100.111.125**

398SCM0033A00

HP M8

MOTORI A PISTONI ASSIALI A CILINDRATA FISSA FIXED-DISPLACEMENT AXIAL PISTON MOTORS KONSTANT-AXIALKOLBENMOTOREN

I motori a pistoni assiali serie HP M8 sono stati concepiti per operare sia in circuito chiuso che aperto.

I vari sistemi di comando disponibili li rendono facilmente adattabili alle esigenze applicative sia per il settore industriale che mobile.

Lo sviluppo di gruppi rotanti appositamente concepiti, unito ad uno studio accurato delle sezioni di passaggio dell'olio, consentono a questi motori di raggiungere elevate velocità di rotazione, garantendo una elevata affidabilità per pressioni di funzionamento fino a 400 bar continui (450 bar di picco). I motori possono essere forniti completi di accessori quali valvole a scarico incrociato e valvola di scambio integrata, disponibili a richiesta.

The HP M8 series axial piston motors have been designed to work both in an open and in a closed circuit.

Control systems actually available are making easy to use these motors in any application for industrial and mobile field. Development of rotating groups, especially designed, united to an accurate study of oil passage sections, allow high speed rotation, giving extreme reliability for working continuous pressure unit of 400 bar and until 450 bar for peak pressure.

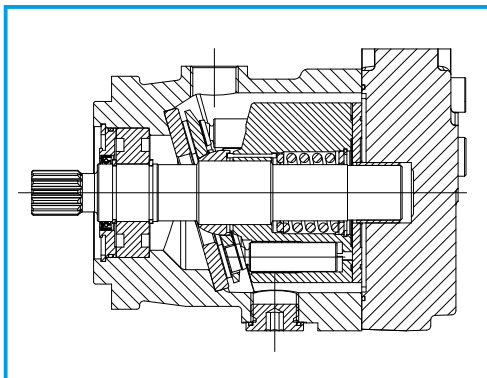
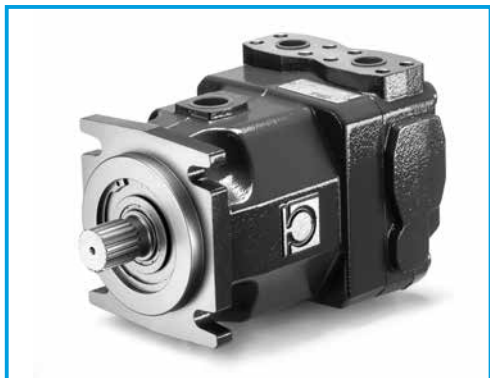
Motors can be supplied on requests with complete accessories such as cross relief and anticavitation valves and built-in relief valve.

Die Axialkolbenmotoren der Serie HP M8 sind sowohl im offenen als auch im geschlossenen Kreislauf einsetzbar.

Durch die lieferbaren unterschiedlichen Steuerungssysteme eignen sie sich sowohl für stationäre als auch für mobile Anwendungen. Speziell entwickelte Zylinderblöcke mit optimalen Strömungsverhältnissen erlauben den Einsatz bei hohen Drehzahlen, wie von modernen Antriebsaggregaten gefordert. Dabei ist ein kontinuierlicher Betriebsdruck von zu 400 bar (Spitzendruck bis 450 bar).

Die Motoren können auf Wunsch mit Sonderzubehör wie Kreuz-Druckbegrenzungs- und Nachsaugventile und integrierte Spülventile ausgestattet werden.

HP M8 77.82.92.100.111.125



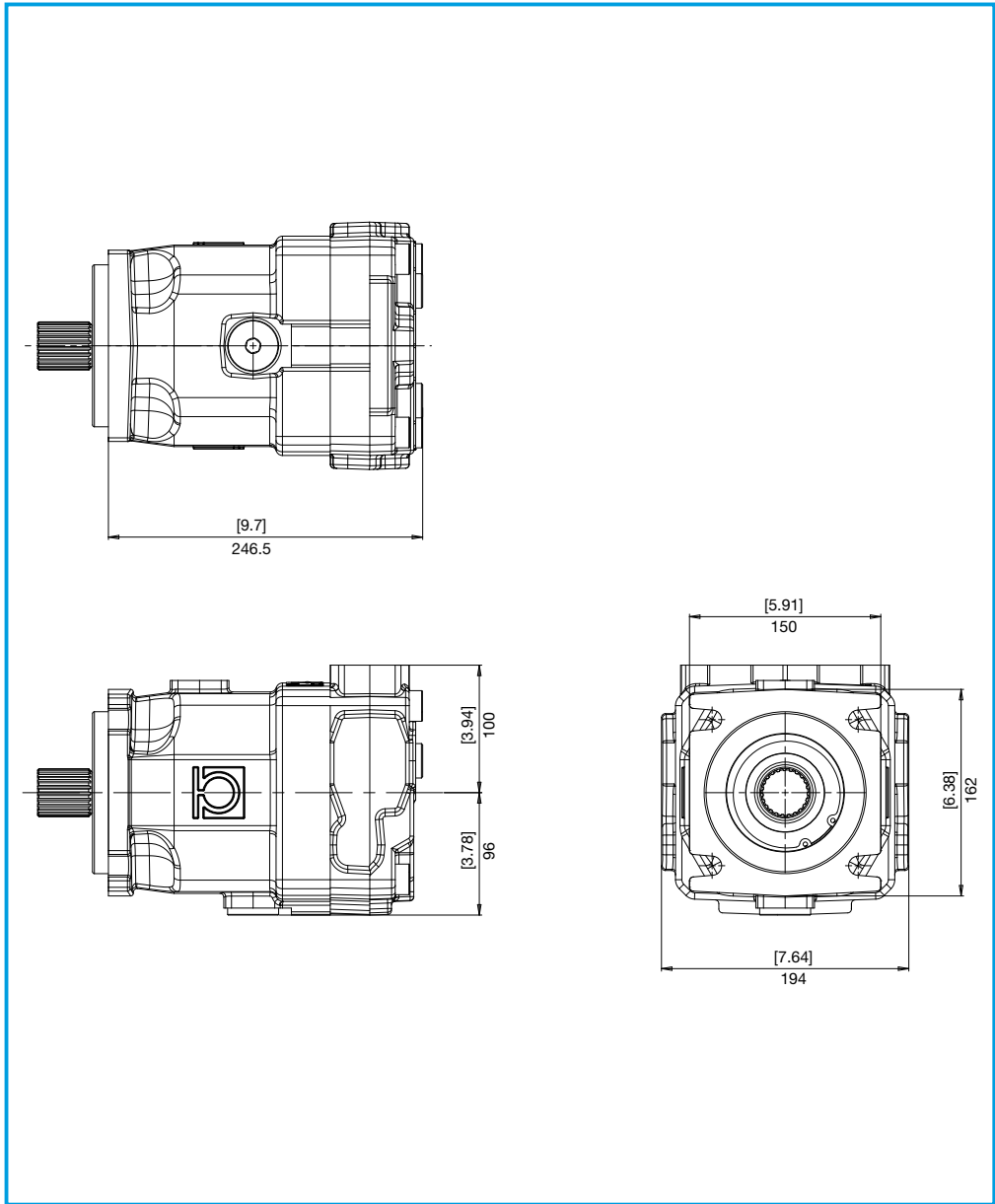
DATI TECNICI TECHNICAL DATA TECHNISCHE MERKMALE

GRUPPO GROUP BAUREIHE	CILINDRATA TEORICA NOMINAL DISPLACEMENT FORDERVOLUMEN (TM)		OSCILLANTE SWASHPLATE SCHWENKWINKEL °	CONTINUA CONTINUOUS DAUER		PRESSIONE PRESSURE DRUCK		PICCO PEAK SPITZEN		VELOCITÀ DI ROTAZIONE SPEED DREHZAHN		MASSA WEIGHT GEWICHT	
	cm ³	in ³		bar	psi	bar	psi	bar	psi	min ⁻¹	min ⁻¹	kg	lbs
				bar	psi	bar	psi	bar	psi	min ⁻¹	min ⁻¹	kg	lbs
HP M8	77	4,7	17	400	5800	420	6090	450	6525	3600	500	39	86
	82	5,0	18	400	5800	420	6090	450	6525	3600	500	39	86
	92	5,6	20	400	5800	420	6090	450	6525	3200	500	39	86
	100	6,1	17	400	5800	420	6090	450	6525	3200	500	40	88
	111	6,8	18	400	5800	420	6090	450	6525	2800	500	40	88
	125	7,6	20	400	5800	420	6090	450	6525	2800	500	40	88

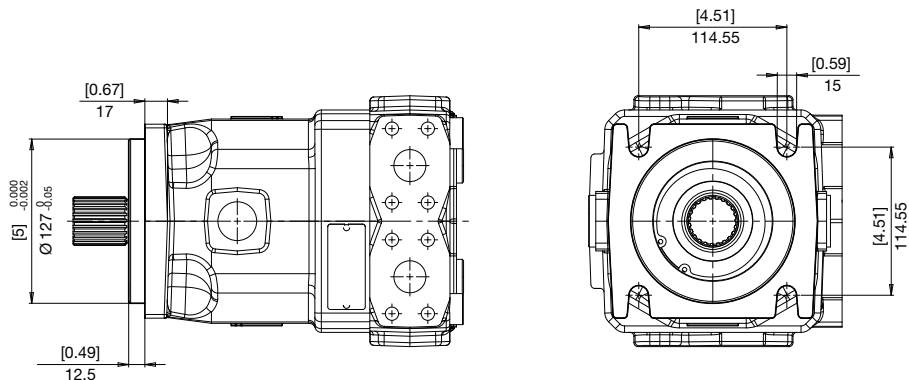


**DIMENSIONI
SIZE
ABMESSUNGEN**

HP M8

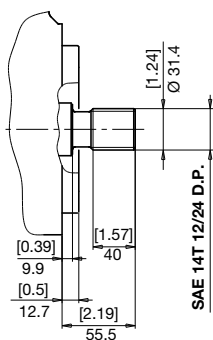


C SAE C 4 FORI
SAE C 4 HOLES
SAE C 4 BOHRUNGEN

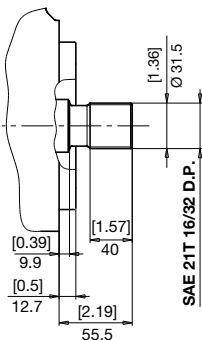


ESTREMITÀ ALBERI
SPLINE SHAFTS
WELLENPROFILE

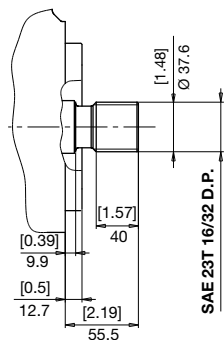
3 COPPIA MAX
MAX TORQUE
MAX DREHMOMENT 865 N•m



7 COPPIA MAX
MAX TORQUE
MAX DREHMOMENT 1085 N•m



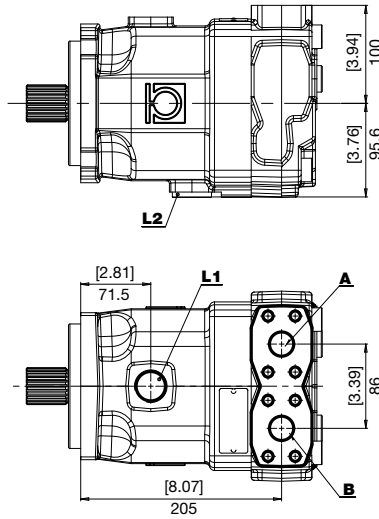
8 COPPIA MAX
MAX TORQUE
MAX DREHMOMENT 1300 N•m



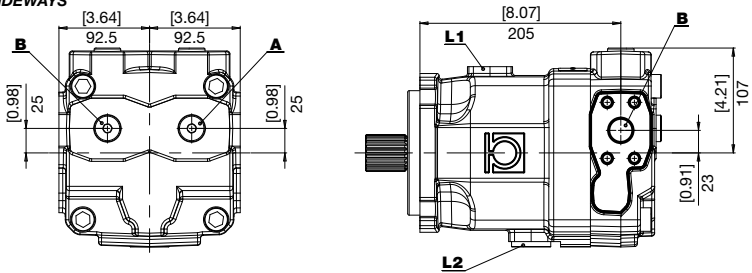
POSIZIONE BOCHE
POSITION OF PORTS
ANSCHLUSSPOSITION

HP M8

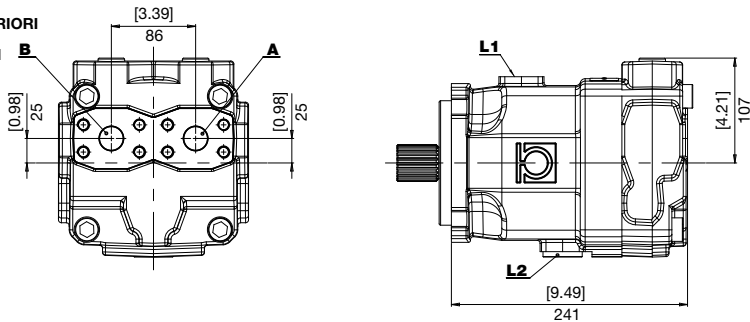
A LATERALI ACCOPIATE
 COUPLED SIDEWAYS
 SEITLICH GEKOPPELT



L LATERALI CONTRAPPOSTE
 OPPOSITE SIDEWAYS
 BEIDSEITIG

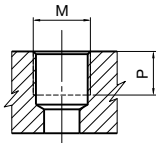


P POSTERIORI
 REAR
 HINTEN

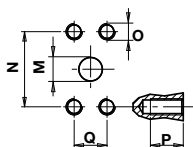


**BOCCHE
PORTS
ANSCHLÜSSE**

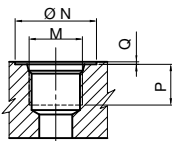
HP M8



TIPO TYPE TYP	M		P	
	Nm	mm	in	
G7	Port ISO 1179-1 - G 1	160	18	0,71



TIPO TYPE TYP	M		N		P		Q		O	
	mm	in	mm	in	mm	in	mm	in	M12	Nm
N7	25	1	57,15	2,25	20	0,78	27,76	1,09	M12	70



TIPO TYPE TYP	DIMENSIONE SIZE GRÖSSE	N		P		Q		M	
		mm	in	mm	in	mm	in	Port ISO 11926-1 - 1 5/16 - 12	Nm
U7	1"	49	1,93	18	0,70	0,3	0,01	Port ISO 11926-1 - 1 5/16 - 12	160

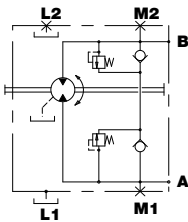
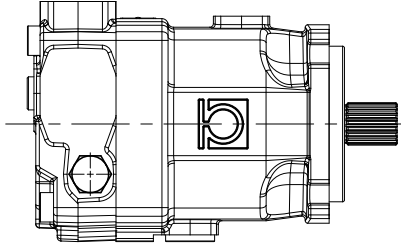
**COMBINAZIONI
COMBINATIONS
KOMBINATIONEN**

TIPO TYPE TYP	A - B INGRESSO/USCITA INLET/ OUTLET EINGANG/AUSGANG	L1 - L2 DRENAGGIO DRAIN LECKÖLANSCHLUSS
G	N7	G7
U	N7	U7

**ACCESSORI
ACCESSORIES
ZUBEHÖR**

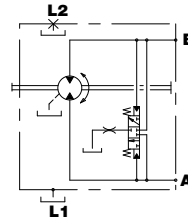
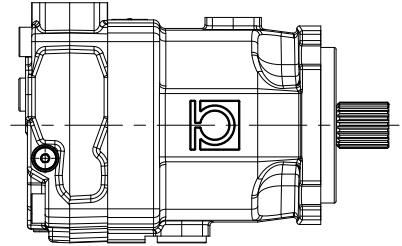
HP M8

M VALVOLA LIMITATRICE DI PRESSIONE E ANTICAVITAZIONE
PRESSURE LIMITER AND ANTICAVITATION VALVE
DRUCKBEGRENZUNGS UND NACHSAUGVENTIL



I valori di taratura sono riportati nella tabella valvole
Settings are listed in the chart for valves
Für die Einstellwerte siehe Ventiltabelle

V VALVOLA DI FLUSSAGGIO (5 - 7 l/min)
FLUSHING AND BOOST VALVE (5 - 7 l/min)
SPUL- UND SPEISEDROCKVENTIL (5 - 7 l/min)



HP

M8

082

B

C

3

G

A

V

0

...

**PRODOTTO
PRODUCT
PRODUKT**

M8 - Motori a pistoni assiali
a cilindrata fissa
alta pressione

M8 - *Fixed-displacement
axial piston motor,
high pressure*

M8 - Konstant-
Axialkolbenmotoren

**CILINDRATA
DISPLACEMENT
FÖRDERVOLUMEN**

077 - 082 - 092 - 100 - 111 - 125

**SENSO DI ROTAZIONE
ROTATION
DREHRICHTUNG**

B - Bidirezionale

B - *Bidirectional*

B - Bidirektional

**FLANGIA
FLANGE
FLANSCH**

C - SAE C 4 fori

C - *SAE C 4 holes*

C - SAE C 4 Bohrungen

**ESTREMITÀ ALBERO
SHAFT PROFIL
WELLELENDE**

3 - Z14 12/24" DP

7 - Z21 16/32" DP

8 - Z23 16/32" DP

**BOCCHE
PORTS
ANSCHLÜSSE**

G - Gas

U - UNF

**ESECUZIONI
SPECIALI
SPECIAL
VERSIONS
SONDERBAUARTEN**

**TARATURA VALVOLE
VALVE SETTING
VENTILE**

0 - senza valvole

no valve

ohne ventile

I - 280 bar

L - 300 bar

O - 350 bar

P - 400 bar

Q - 420 bar

R - 450 bar

**ACCESSORI
ACCESSORIES
ZUBEHÖR**

0 - nessuno

M - Valvola limitatrice di pressione

e anticavitazione

S - accessori multipli -esecuzioni speciali

V - Valvola di flussaggio

0 - *no accessories*

M - *pressure limiter and anticavitation valve*

S - *multiple accessories*

special versions

V - *flushing and boost valve*

0 - kein Zubehör

M - Druckbegrenzungs und Nachsaugventil

S - Zubehörkombinationen

Sonderbautarten

V - Spül- und Spisedruckventil

**POSIZIONE BOCCHIE
POSITION OF PORTS
ANSCHLUSSPOSITION**

A - Laterali accoppiate

L - Laterali contrapposte

P - Posteriori

A - *Coupled sideways*

L - *Opposite sideways*

P - *Rear*

A - Seitlich gekoppelt

L - Beidseitig

P - Hinten