

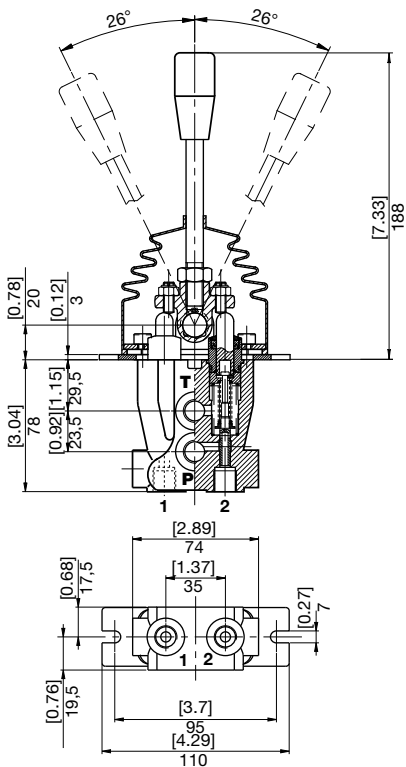


**SERVOCOMANDO A UN ASSI
(AZIONAMENTO A LEVA)**
***SINGLE AXIS SERVO CONTROL
(LEVER MECHANISM)***
**SERVOSTEUERUNG MIT
HANDBEDIENUNG**

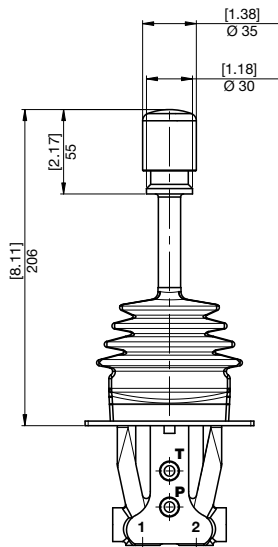
HPCS

398SSC0023A01

S A

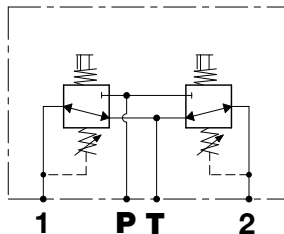
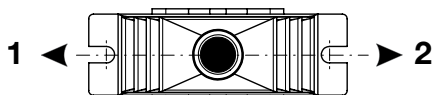


B C



1	UTILIZZI PORTS ANSCHLÜSSE
T	SERBATOIO TANK TANK
P	INGRESSO INLET DRUCKVERSORGUNG

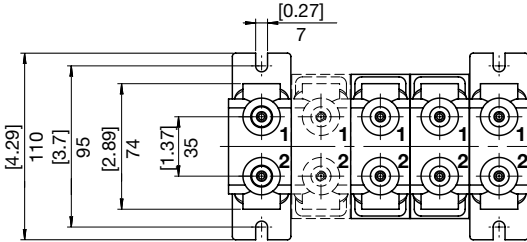
DIREZIONI DI AZIONAMENTO
DIRECTION OF ACTUATION
BETÄTIGUNGSRICHTUNG





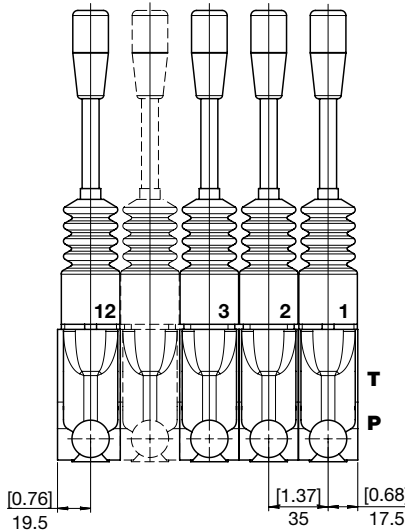
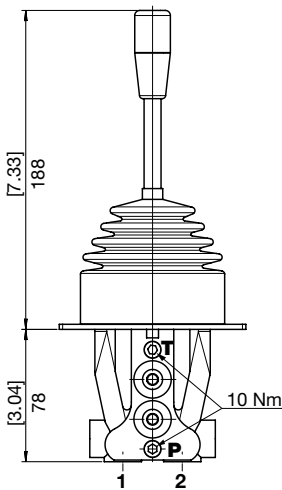
MODELLI
MODELS
MODELLE

HPCS

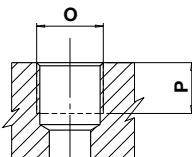


DA 1 A 12 SEZIONI
FROM 1 TO 12 SECTIONS
VON 1 BIS 12 SEKTIONEN

- 1** N° 1 Sezione / Section / Sektion
- 2** N° 2 Sezione / Section / Sektion
- 3** N° 3 Sezione / Section / Sektion
- 4** N° 4 Sezione / Section / Sektion
- 5** N° 5 Sezione / Section / Sektion
- 6** N° 6 Sezione / Section / Sektion
- 7** N° 7 Sezione / Section / Sektion
- 8** N° 8 Sezione / Section / Sektion
- 9** N° 9 Sezione / Section / Sektion
- A** N° 10 Sezione / Section / Sektion
- B** N° 11 Sezione / Section / Sektion
- C** N° 12 Sezione / Section / Sektion



BOCCHIE
PORTS
ANSCHLÜSSE

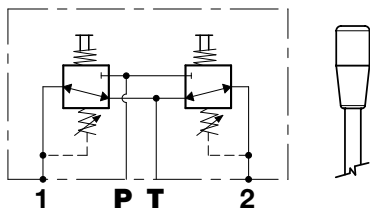


TIPO TYPE TYP	O		P	
		Nm	mm	in
G2	1/4"	17	12	0,47
U3	9/16-18 UNF	25	13	0,47

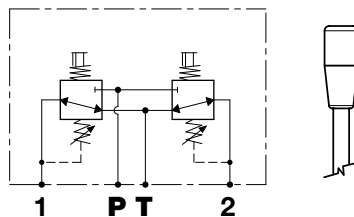
POSIZIONATORE
POSITIONER
HEBELBETÄTIGUNG

HPCS

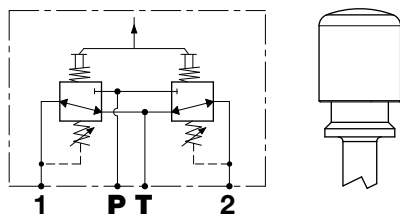
S STANDARD CON RITORNO A MOLLA AL CENTRO
 STANDARD WITH SPRING BACK
 RÜCKSTELLUNGSFEDER



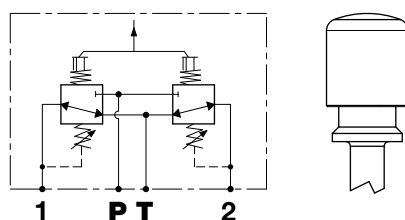
A FRIZIONATO
 CLUTCH CONTROLLED
 RÜCKSTELLUNGSFEDER GEKLEMMT



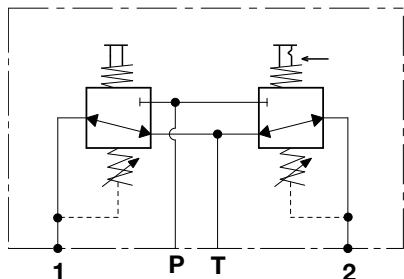
L BLOCCO IN CENTRO CON RITORNO A MOLLA
 CENTRAL WITH SPRING BACK
 FEDERARRETIERUNG IN MITTELSTELLUNG



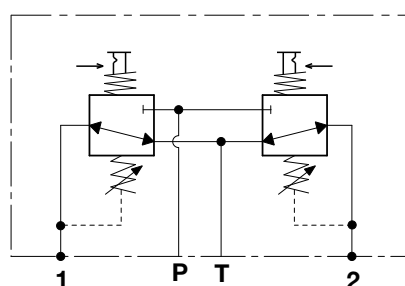
F BLOCCO IN CENTRO FRIZIONATO
 CENTRAL CLUTCH CONTROLLED
 SICHERUNG IN DER MITTELSTELLUNG



Q BLOCCO MECCANICO POS. 2
 MECHANICAL DETENT POS.2
 ARRETIERUNG POS.2



D BLOCCO MECCANICO POS. 1-2
 MECHANICAL DETENT POS. 1-2
 ARRETIERUNG POS. 1-2

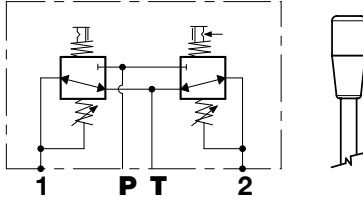




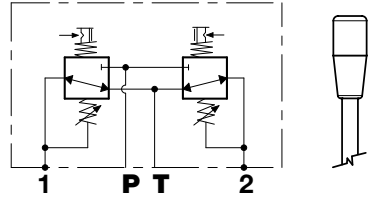
POSIZIONATORE
POSITIONER
HEBELBETÄTIGUNG

HPCS

U BLOCCO MECCANICO POS. 2 FRIZIONATO
MECHANICAL DETENT POS.2 CLUTCH CONTROLLED
ARRETIERUNG POS.2 RÜCKSTELLUNGSFEDER GEKLEMMT



Y BLOCCO MECCANICO POS. 1-2 FRIZIONATO
MECHANICAL DETENT POS. 1-2 CLUTCH CONTROLLED
ARRETIERUNG POS.1-2 RÜCKSTELLUNGSFEDER GEKLEMMT

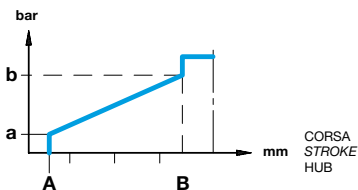


**CURVE DI REGOLAZIONE
PRESSURE CURVES
REGELKURVEN**

HPCS

S..

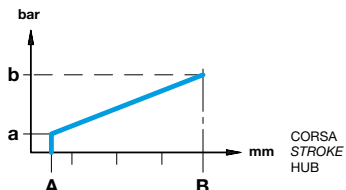
CON STEP
WITH STEP
MIT SPRUNG



**CURVE DI REGOLAZIONE RAMPA SINGOLA
SINGLE SLOPE PRESSURE CURVES
EIN-RAMPEN-REGELKURVEN**

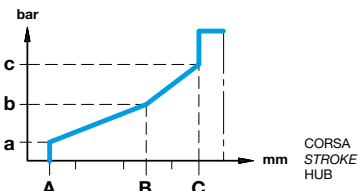
L..

SENZA STEP
WITHOUT STEP
OHNE SPRUNG



M..

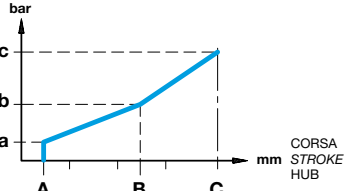
CON STEP
WITH STEP
MIT SPRUNG



**CURVE DI REGOLAZIONE RAMPA DOPPIA
DOUBLE SLOPE PRESSURE CURVES
ZWEI-RAMPEN-REGELKURVEN**

G..

SENZA STEP
WITHOUT STEP
OHNE SPRUNG



**CURVE DI REGOLAZIONE
ADJUSTMENT CURVES
REGELKURVEN**

TIPO TYPE TYP	PRESSIONE PRESSURE DRUCK			
	a		b	
S	bar	psi	bar	psi
S00	2	29	16	232
S01	5	73	20	290
S02	6,5	94	24,5	355
S04	3	46	17	249
S08	5	73	16	232
S11	4	58	15	218
S12	1,5	22	7	102
S13	5	73	28	406

TIPO TYPE TYP	PRESSIONE PRESSURE DRUCK						CORSO STROKE HUB		
	a		b		c		A	B	C
M60	bar	psi	bar	psi	bar	psi	mm	mm	mm
	5	73	12	174	21	306	1,2	5,4	7,8

TIPO TYPE TYP	PRESSIONE PRESSURE DRUCK						CORSO STROKE HUB		
	a		b		c		A	B	C
G60	bar	psi	bar	psi	bar	psi	mm	mm	mm
	5	73	12	174	23	334	1,2	5,4	8,3

TIPO TYPE TYP	PRESSIONE PRESSURE DRUCK			
	a		b	
L	bar	psi	bar	psi
L00	2	29	18	261
L01	5	73	22	319
L02	6,5	94	26,5	384
L04	3	46	19	276
L08	5	73	18	261
L11	4	58	15	218
L12	1,5	22	9	131
L13	5	73	30	435



ISTRUZIONI PER L'ORDINAZIONE
ORDERING INSTRUCTIONS
BESTELLEANLEITUNG

HPCS

HPCS

1

G2

1

G

S

S00

00

000

SERIE
SERIES
SERIE

MODELLI
MODELS
MODELLE

1 = N° 1 sezione - *1 section* - 1. Sektion
2 = N° 2 sezioni - *2 sections* - 2. Sektion
3 = N° 3 sezioni - *3 sections* - 3. Sektion
4 = N° 4 sezioni - *4 sections* - 4. Sektion
5 = N° 5 sezioni - *5 sections* - 5. Sektion
6 = N° 6 sezioni - *6 sections* - 6. Sektion
7 = N° 7 sezioni - *7 sections* - 7. Sektion
8 = N° 8 sezioni - *8 sections* - 8. Sektion
9 = N° 9 sezioni - *9 sections* - 9. Sektion
A = N° 10 sezioni - *10 sections* - 10. Sektion
B = N° 11 sezioni - *11 sections* - 11. Sektion
C = N° 12 sezioni - *12 sections* - 12. Sektion

BOCCHIE STANDARD
STANDARD PORT
STANDARD ANSCHLÜSSE

G2 = 1/4" gas-BSP
U3 = SAE 9/16"-18UNF

GUARNIZIONI
SEALS
DICHTUNGEN

1 - NBR
2 - Viton

IMPUGNATURE
HANDLES
GRIFFE

0 = Senza impugnatura
G = Pomello cilindrico
J = Pomello (solo posizionatore L e F)

0 = Without grip
G = Knob cylinder
J = Knob (positioner L and F only)

0 = Ohne Griff
G = Zylindrischer Handgriff
J = Handgriff (nur Stellgerät L und F)

VERSIONI SPECIALI
SPECIAL VERSIONS
SONDERAUSFÜHRUNGEN

000 = Nessuna esecuzione speciale
001 = Leva inclinata a DX 20°
002 = Leva inclinata a SX 20°
000 = No special execution
001 = Lever tilted to right 20°
002 = Lever tilted to left 20°
001 = Um 20° nach rechts geneigter Hebel
002 = Um 20° nach links geneigter Hebel

COMANDI ELETTRICI
ELECTRIC CONTROLS
ELEKTROSTEUERUNGEN

1N = Micro di zero 12V
12V Neutral switch
Stellungs- Überwachungsschalter 12V
1R = Micro di retromarcia 12V
12V reverse micro
Rückwärtsgang-Mikroschalter 12V

1R per default nell'Ut.2
1R as standard on 2
1R für Fehler am Verbraucher 2

CURVE
CURVES
KURVEN

Vedere pag. 17
See pag. 17
Siehe Seite 17

POSIZIONATORE POSITIONER RASTER

S = Ritorno a molla
Spring-back
Rückstellungsfeder
A = Frizionato
Clutch Controlled
Rückstellungsfeder geklemmt
L = Blocco in centro con ritorno a molla
Central, with spring-back
Federarretterung in Mittelstellung
F = Blocco in centro frizionato
Central, clutch-controlled
Sicherung in der Mittelstellung
Q = Blocco meccanico posizione 2
Mechanical detent pos.2
Arretterung pos.2
D = Blocco meccanico posizione 1-2
Mechanical detent pos.1-2
Arretterung pos.1-2
U = Blocco meccanico pos. 2 frizionato
Mechanical detent pos. 2 clutch controlled
Arretterung pos.2 rückstellungsfeder geklemmt
Y = Blocco meccanico pos. 1-2 frizionato
Mechanical detent pos.1-2 clutch controlled
Arretterung pos.1-2 rückstellungsfeder geklemmt