



---

**SERVOCOMANDO A TRE ASSI  
(AZIONAMENTO A LEVA)**

***THREE AXIS SERVO CONTROL  
(LEVER MECHANISM)***

**SERVOSTEUERUNG MIT  
HANDBEDIENUNG**

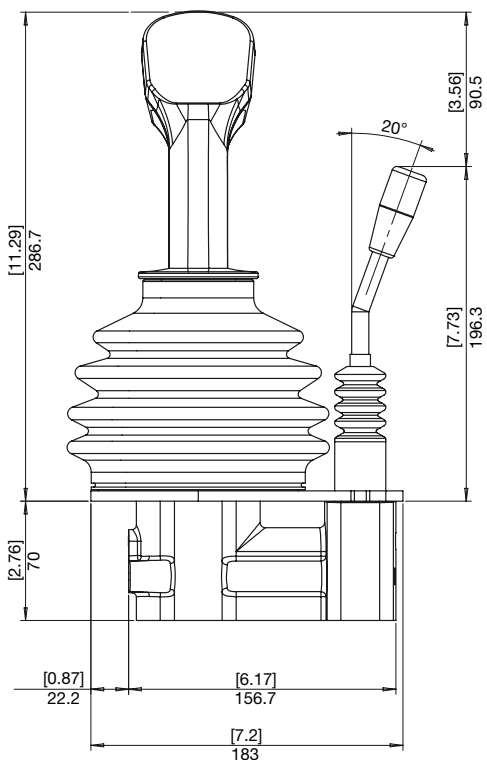
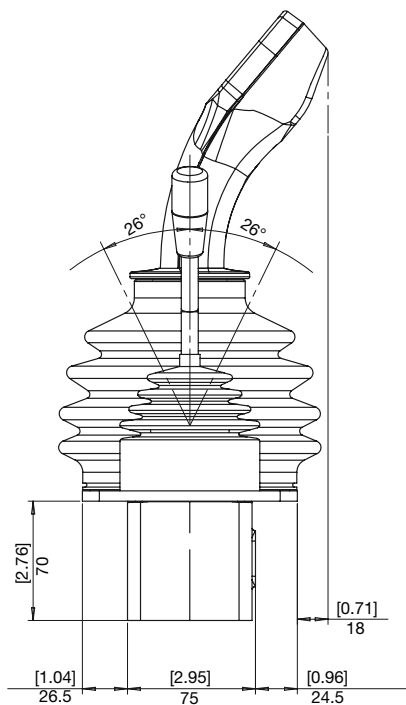
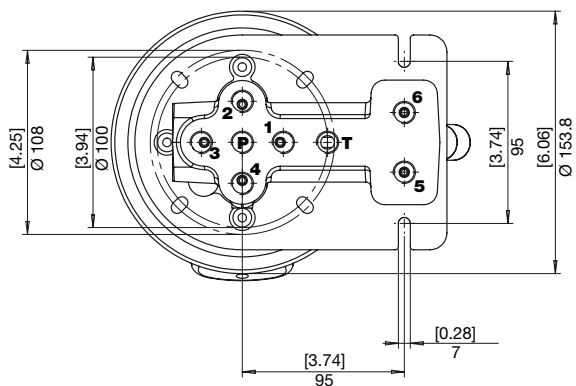
**HPCD**

398SSC0033A01

- 1 UTILIZZI
- 2 PORTS
- 3 ANSCHLÜSSE
- 4
- 5
- 6

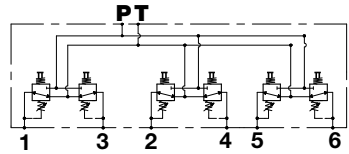
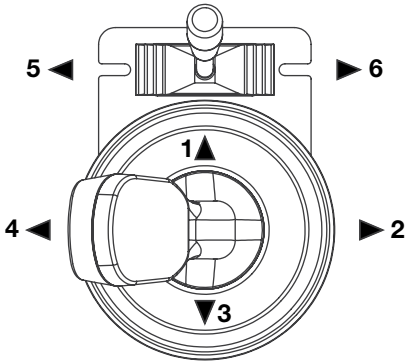
T SERBATOIO  
TANK  
TANK

P INGRESSO  
INLET  
DRÜCKVERSORGUNG



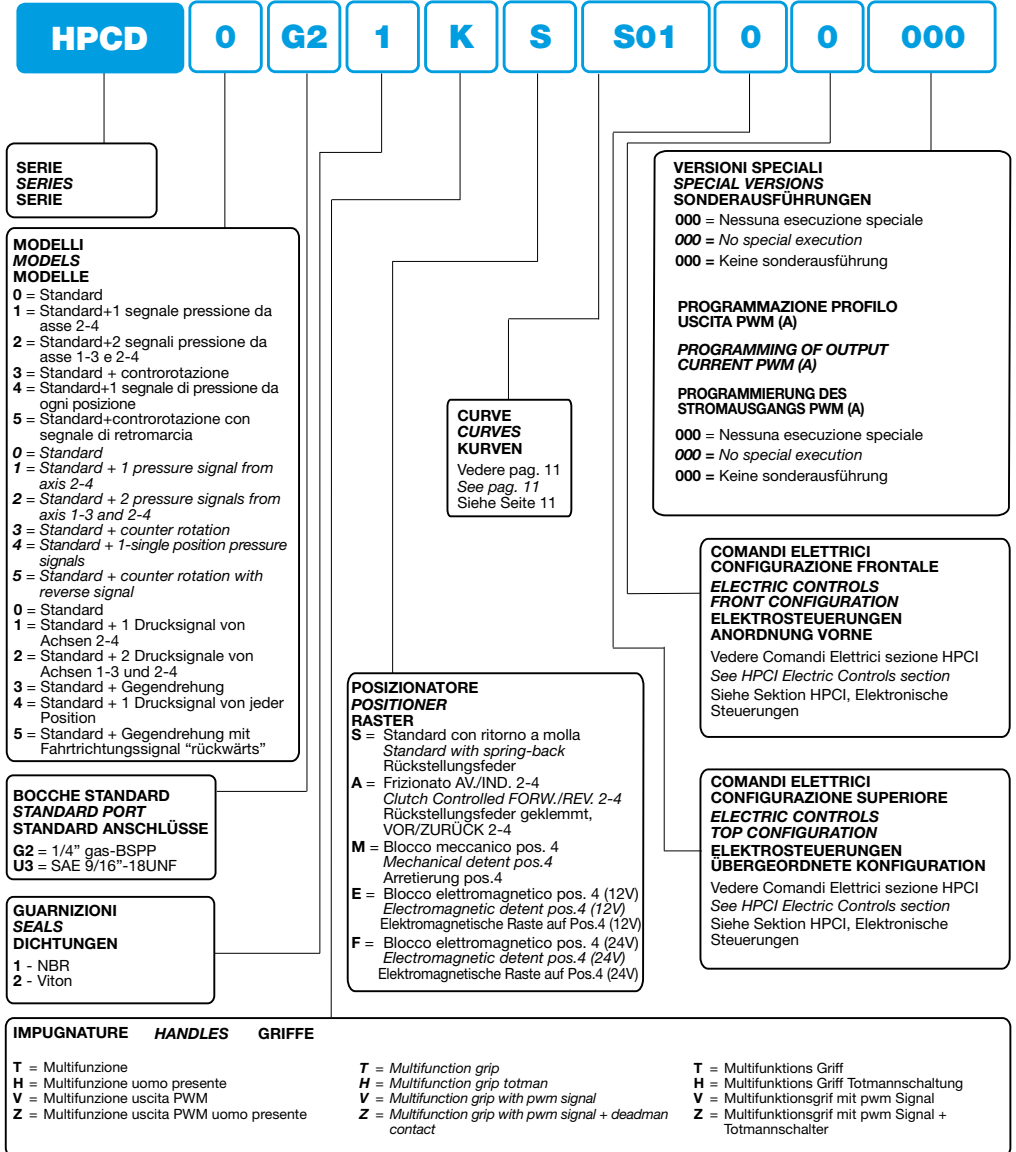


DIREZIONI DI AZIONAMENTO  
DIRECTION OF ACTUATION  
BETÄTIGUNGSRICHTUNG



**ISTRUZIONI PER L'ORDINAZIONE**  
**ORDERING INSTRUCTIONS**  
**BESTELLEANLEITUNG**

Sezione a due assi (HPCJ) - Double axis section (HPCJ) - Einachsige Sektion (HPCJ)





Sezione a un asse (HPCS) - Mono axis section (HPCS) - Einachsige Sektion (HPCS)



**VERSIONI SPECIALI  
SPECIAL VERSIONS  
SONDERAUSFÜHRUNGEN**

**000** = Nessuna esecuzione speciale  
**000** = No special execution  
**000** = Keine Sonderausführung

**MODELLI  
MODELS  
MODELLE**

1 = 1 sezione  
1 section  
1. Sektion

**BOCCHIE STANDARD  
STANDARD PORT  
STANDARD ANSCHLÜSSE**

**G2** = 1/4" gas-BSPP  
**U3** = SAE 9/16"-18UNF

**GUARNIZIONI  
SEALS  
DICHTUNGEN**

1 - NBR  
2 - Viton

**IMPUGNATURE  
HANDLES  
GRIFFE**

**0** = Senza impugnatura  
**G** = Pomello cilindrico

**0** = Without grip  
**G** = Knob cylinder

**0** = Ohne Griff  
**G** = Zylindrischer Handgriff

**COMANDI ELETTRICI  
ELECTRIC CONTROLS  
ELEKTROSTEUERUNGEN**

**1N** = Micro di zero 12V  
12V Neutral switch  
Stellungs- Überwachungsschalter 12V

**1R** = Micro di retromarcia 12V  
12V reverse micro  
Rückwärtsgang-Mikroschalter 12V

1R per default nell'Ut.2  
1R as standard on 2  
1R für Fehler am Verbraucher 2

**CURVE  
CURVES  
KURVEN**

Vedere pag. 17  
See pag. 17  
Siehe Seite 17

**POSIZIONATORE  
POSITIONER  
RASTER**

**S** = Ritorno a molla  
Spring-back  
Rückstellungsfeder

**A** = Frizionato  
Clutch Controlled  
Rückstellungsfeder geklemmt

**Q** = Blocco meccanico posizione 5  
Mechanical detent pos.5  
Arretierung pos.

**D** = Blocco meccanico posizione 5-6  
Mechanical detent pos.5-6  
Arretierung pos.5-6

**U** = Blocco meccanico pos. 2 frizionato  
Mechanical detent pos. 2 clutch controlled  
Arretierung pos.2 rückstellungsfeder geklemmt

**Y** = Blocco meccanico pos. 1-2 frizionato  
Mechanical detent pos.1-2 clutch controlled  
Arretierung pos.1-2 rückstellungsfeder geklemmt